

Galway County Heritage and Biodiversity Plan 2024~ 2030



Comhairle Chontae na Gaillimhe
Galway County Council



An Chomhairle Oidhreachta
The Heritage Council



Galway County Heritage
& Biodiversity Forum
Fóram Oidhreachta agus
Bithéagsúlachta Chontae na Gaillimhe



Killannin Bog - Kay Synott



Contents

	Page
Message from Cllr Martina Kinane, Cathaoirleach, Galway County Council	1
Message from Liam Conneally, Chief Executive, Galway County Council	4
Message from the Heritage Council	5
Message from the Heritage Officer and Biodiversity Officer	6
Acknowledgements	9
Executive Summary	10
Introduction	11
What is Heritage and Why is it Important?	12
What is Biodiversity and Why is it Important?	13
The Heritage and Biodiversity of Galway County	15
Overview	15
Biodiversity and Natural Heritage	15
Built and Archaeological Heritage	16
Cultural Heritage	16
An Evolving Heritage	16
What We Do:	17
Galway County Council Heritage Office	17
Galway Community Archaeologist	18
Galway County Council Biodiversity Office	19
Galway County Council Architectural Conservation Office	20
Galway County Heritage and Biodiversity Forum	20
The Heritage Council	21
Heritage Council's Local Authority Liaison Officer	22
<i>Galway County Heritage and Biodiversity Plan 2024-2030</i>	23
About the Plan	23
Vision for Heritage and Biodiversity in Galway County	25
<i>Aims of Galway County Heritage and Biodiversity Plan 2024-2030</i>	26
Guiding Principles	27

Contents

	Page
Process of Forming the Plan	29
Legislative and Policy Context	31
Delivery of the Plan	34
Collaborative Approach	35
Timeframe	36
Finance and Resourcing the Plan	36
Communication	37
Monitoring and Evaluation	37
Work of Previous Plans	38
Actions, Objectives and Key Performance Indicators	39
Biodiversity Actions	40
Cultural Heritage Actions	52
Built and Archaeological Heritage	60
Heritage Best Practice	70
Conclusion	70
Appendix 1: Key Legislation and Policies	73
Appendix 2 Plan Development Process	82
Appendix 3: Galway Heritage and Biodiversity Forum	84
Appendix 4: Maps	86
Appendix 5: Overview and Selected Heritage and Biodiversity Achievements of 2017-2022	98
Appendix 6: Public Consultation - Have Your Say	104
Appendix 7: Summary of Online and Written Feedback	106
Appendix 8: Face-to-face Public Consultation Workshops Summary of Views Expressed	107
Appendix 9: Summary of Art Workshop Process and Feedback	110
Appendix 10: NATURA 2000 Sites and Their Qualifying Interests	112

Message from Cllr Martina Kinane, Cathaoirleach, Galway County Council



I am honoured to present *Galway County Heritage and Biodiversity Plan 2024-2030*. This plan is not merely a document; it is a commitment to ensuring that we have a greater awareness of the rich tapestry of our natural, built and cultural heritage and to managing and protecting it for current and future generations.

Galway County is privileged to possess a wealth of heritage assets and biodiversity resources in which we can all take great pride. This plan offers practical actions to enhance awareness, understanding, protection and enjoyment of our heritage and biodiversity. The plan is dynamic and designed to adapt to evolving opportunities.

Galway County Heritage and Biodiversity Plan 2024-2030 embodies the enthusiastic involvement of individuals, groups, and organisations that actively contributed to its development. From Inishbofin, Ballygar, Abbey, Killarerin, Leitir Mealláin, Oranmore and beyond, the people of Galway County showed their passion, insights and commitment to the heritage and biodiversity of the county. This significantly influenced the development of the plan, which builds on previous plans and initiatives while aiming to engage a broader audience in a sustainable and inclusive way.

I would like to take this opportunity to acknowledge the incredible amount of work being carried out by our communities in collaboration with Galway County Council. Their dedication and energy for protecting our biodiversity and heritage are truly inspiring. In the face of climate change and biodiversity loss, this plan serves as a roadmap for action. It emphasises the importance of partnership among individuals, communities, stakeholders, educational institutions and government bodies to safeguard all aspects of our heritage and biodiversity.

I invite everyone in Galway County to engage with this plan, to share their knowledge and to undertake actions and initiatives that enhance and protect our heritage and biodiversity. In doing so, there is no doubt that this *meitheal* can bring about change and actions that make a positive difference.

Cllr Martina Kinane



Kingfisher - *Shane Coyle*



European Gorse - *Rosina Joyce*

Message from Liam Conneally, Chief Executive, Galway County Council



As Chief Executive of Galway County Council, I am delighted to introduce *Galway County Heritage and Biodiversity Plan 2024-2030*. This plan represents a clear vision for the future for our county, focusing on the integration of heritage, conservation and biodiversity into our everyday lives.

The plan provides us with a specific framework for our work in heritage and biodiversity for the years ahead. By fostering a deeper understanding and appreciation of our built, natural and cultural heritage, we can inspire stewardship and encourage sustainable practices in heritage and biodiversity management. Importantly, this plan outlines clearly defined actions and timeframes, providing a structured approach to achieving our goals. By establishing tangible targets, we can effectively monitor our progress and adapt our strategies as needed.

We recognise that the challenges we face with climate change require innovative solutions and collective effort. By implementing this plan, we aim to create a legacy of resilience that will benefit not only the residents and visitors to our county but also generations to come. I urge all stakeholders to engage in collaboration with us in this essential endeavour, ensuring that Galway County's heritage and biodiversity thrive and receive the prominence they rightfully deserve.

I would like to acknowledge the significant contributions of the Galway County Heritage and Biodiversity Forum, which unites a diverse array of stakeholders, including key organisations and community representatives. This forum plays an essential role in facilitating dialogue and ensuring that all perspectives are considered in our efforts to raise awareness, promote, manage and protect the heritage and biodiversity of the county.

It is an objective in our Corporate Plan and our County Development Plan to support the implementation of the *Galway County Heritage and Biodiversity Plan 2024-2030*.

The ongoing support of the Heritage Council has been crucial in achieving many actions to date, particularly in the development and funding of the Heritage Officer, Biodiversity Officer and Community Archaeologist roles. On behalf of Galway County Council, I extend our gratitude for their continued commitment and support.

Furthermore, I wish to acknowledge the funding, investment and benefit-in-kind from various Government departments, the LEADER companies and other agencies and institutions.

I commend the work of all those involved in the preparation of this plan, including communities across the county, organisations and individuals, the Heritage and Biodiversity Forum, the Heritage Council and Galway County Council staff.

I take great pride in our county's heritage and biodiversity and this forward-thinking plan. Galway County Council welcomes the challenges ahead and looks forward to its implementation over the coming years.

Liam Conneally, Chief Executive, Galway County Council

Message from the Heritage Council

It gives us great pleasure to welcome the *Galway County Heritage and Biodiversity Plan 2024-2030*. This plan is a significant and timely achievement—distinct not only in its ambition but in its structure. It does not treat heritage and biodiversity as separate concerns but recognises biodiversity as an essential part of our shared heritage, interwoven with the cultural, archaeological, natural and built environments that define Galway’s identity.

The Heritage Council has long supported this joined-up approach. Since 1999, we have worked in partnership with local authorities to embed the Local Authority Heritage Officer Programme, and in 2022 we extended this support to the Biodiversity Officer Programme. These roles now operate side by side in Galway, with the Architectural Conservation Officer also playing a vital role in safeguarding the integrity of the county’s built heritage. Together, they form a strong foundation for an integrated and forward-thinking heritage response.

The plan’s Guiding Principles speak clearly to this vision. The commitment to an integrated and holistic heritage approach is not just appropriate, it is essential—and it underpins the plan’s structure and actions throughout. Equally important is the emphasis on Gaeilge as a living language: central to the cultural heritage of the county and a vital part of its future. This recognition gives the plan a strong cultural grounding, one that is matched by its ecological and architectural depth.

We are proud to have supported the development of this plan and commend the Galway County Heritage and Biodiversity Forum for its leadership. We particularly acknowledge the outstanding work of Galway’s Heritage Officer and Biodiversity Officer, whose collaboration has been pivotal.

The Heritage Council looks forward to supporting Galway County Council, the Forum and the wider community as this ambitious plan is brought to life.



Virginia Teehan
Chief Executive, The Heritage Council



Martina Maloney
Chair, The Heritage Council



Trá An Dóilín - Kay Synott

Message from the Heritage Officer and Biodiversity Officer

As Heritage Officer and Biodiversity Officer of Galway County Council, we are proud to present the *Galway County Heritage and Biodiversity Plan 2024-2030*. This plan represents a shared vision for the conservation, protection, and enhancement of Galway's rich heritage and biodiversity, ensuring that these invaluable resources are safeguarded for current and future generations.

Galway County is home to a remarkable tapestry of natural, built, and cultural heritage. From the rugged landscapes of Conemara to the limestone pavements of south Galway, and from the vibrant traditions of sean nós singing to the unique biodiversity of turloughs and bogs, our county's heritage is a source of pride and identity. This plan seeks to celebrate these assets while addressing the challenges posed by climate change, biodiversity loss, and evolving societal needs.

The *Galway County Heritage and Biodiversity Plan 2024-2030* is the result of extensive collaboration and consultation. It reflects the insights, passion, and commitment of individuals, communities, and organisations across the county. Through public workshops, online surveys, and creative art consultations, we have captured the voices of diverse groups, ensuring that this plan is inclusive and representative of the people it serves. We are deeply grateful to everyone who contributed their time, expertise, and perspectives to this process.



Templejarlath - *Bernie Doherty*

This plan is action-oriented, with clearly defined objectives and key performance indicators across six strategic themes: Community Engagement, Education and Training, Research, Monitoring and Conservation, Galway County Council People, Property and Works, Stakeholder Engagement and Collaborative Opportunities, and Climate Action. These themes provide a structured framework for addressing the challenges and opportunities facing Galway's heritage and biodiversity.

We recognise the vital role of communities as stewards of heritage and biodiversity. This plan emphasises empowering communities through education, training, and support, fostering a sense of ownership and pride in local heritage. It also highlights the importance of collaboration, bringing together stakeholders from government agencies, non-governmental organisations, academic institutions, and the private sector to achieve shared goals.

Climate change and biodiversity loss are central to this plan. We are committed to integrating climate resilience into all actions, ensuring that Galway's heritage and biodiversity contribute to mitigating and adapting to the impacts of climate change. By promoting sustainable practices and innovative solutions, we aim to create a legacy of resilience for future generations.



Blue Dots of Connemara - Peter Cutler

Galway County Heritage and Biodiversity Plan 2024-2030 builds on the achievements of previous plans while embracing new opportunities and challenges. It aligns with national and international policies, including the National Heritage Plan, the National Biodiversity Action Plan, and the United Nations Sustainable Development Goals.

As custodians of Galway's heritage and biodiversity, we invite everyone to engage with this plan, to share their knowledge, and to take action. Together, we can ensure that Galway's heritage and biodiversity continue to thrive, enriching the lives of all who live, work and visit our county.



***Marie Mannion, Heritage Officer
Galway County Council***



***Rosina Joyce, Biodiversity Officer
Galway County Council***

Acknowledgements

Galway County Council and Galway County Heritage and Biodiversity Forum wish to acknowledge the support of The Heritage Council in the preparation of *Galway County Heritage and Biodiversity Plan 2024-2030*, through its part-funding of the Heritage Officer and Biodiversity Officer posts and the provision of annual funding for the implementation of Galway County Heritage and Biodiversity Plan actions. Galway County Council and Galway County Heritage and Biodiversity Forum acknowledge the role of consultants Zena Hocht, Eimear O’Connell, Sheila Murphy and Maria Hitchcox with regards to undertaking public consultation and assisting in formulating the County Heritage and Biodiversity Plan. We would like to pay a particular tribute to all those who took part in the consultation process. Their insights, time and commitment were invaluable in shaping a plan that truly reflects the values and aspirations of the people of County Galway.”

Sincere thanks are due to Marianne ten Cate for her meticulous proofreading of numerous drafts of the plan, ensuring clarity and consistency throughout. Galway County Council and the Galway County Heritage and Biodiversity Forum would also like to extend heartfelt thanks to Gina O’Shaughnessy, Assistant Staff Officer; Martina Creaven, Senior Staff Officer; Anne Power, Senior Staff Officer; and Ita Gordon, Clerical Officer, for their invaluable administrative support during the development of this plan.

We are incredibly appreciative of the support received from Liam Hanrahan Director of Services, Economic Development & Planning, Valerie Loughnane, Senior Planner and Eileen Keaveney, Administrative Officer.

Special thanks are due to Brídín Feeney of the GIS Section, Galway County Council and Nigel Malcolm for their expert assistance in mapping and spatial data support, for this plan and our projects. We are also grateful to Galway County Council staff who supported the Forum’s meetings, including Tommy Murray, James Duane, and the IT Department—particularly Ciarán O’Donnell, Assumpta Francis, and Brian Cullen—for their technical expertise and assistance.

Students Eva Habermann (ATU, Sligo) and Natalie Cyrkel (University of Galway) provided valuable research and development support, and their contributions are warmly acknowledged. Finally, we would like to thank the Senior Management Team of Galway County Council, the Climate Action, Biodiversity and Heritage Strategic Policy Committee and the Elected Members of Galway County Council for all their support.

The development of this plan was funded by the Heritage Council and Galway County Council.

Design: Damien Goodfellow | Translation: Europus

Photographs: Rosina Joyce, Marie Mannion, Meitheal Mara, Robert Riddell, Cormac Coyne, Kay Synott, Pat O’Connor, Alan Burgess, Ruth Hanniffy, Bernadette Doherty, Seán Lydon, Shane Coyle, Jan Robert-Baars, Peter Cutler, John Lusby, Mike O’Shaughnessy, Hany Marzouk, Jacinta Fahy, Aedín Ní Thiarnaigh, Jacinta Fahy, Maria Hitchcox and University of Galway.

Mapping: ImpactGIS (OpenStreetMap Contributors (CC BY-SA 2.0)/ EPA & Tailte Éireann - Surveying (CC BY 4.0) EU-DEM

Printing: KPW

Copyright: © Galway County Council 2024

ISBN: 978-1-913449-28-5

For further information please contact:

heritage@galwaycoco.ie and biodiversity@galwaycoco.ie



Comhairle Chontae na Gaillimhe
Galway County Council



An Chomhairle Oidhreachta
The Heritage Council



Galway County Heritage
& Biodiversity Forum
Fóram Oidhreachta agus
Bithéagsúlachta Chontae na Gaillimhe

Executive Summary

Galway County Heritage and Biodiversity Plan 2024-2030 celebrates the rich diversity and importance of Galway's heritage and biodiversity. It acknowledges the essential role of heritage and biodiversity in our society, well-being and economy.

This plan serves as a framework for furthering the awareness, protection, conservation, promotion, and management of Galway's heritage and biodiversity over the next six years and beyond.

The contributions of a wide range of individuals, organisations, community groups, schools, further educational institutions and government partners have helped shaping the vision, actions, objective and key performance indicators of this plan. One of the key strengths of this is having this extensive network of heritage and biodiversity partners who can effectively drive the implementation of the plan in the coming years.

This document outlines the vision for the plan and briefly describes the collaborative process used to develop it, emphasising the partnership approach taken. The plan has established a shared set of actions across the disciplines of Biodiversity and Natural Heritage, Built and Archaeological Heritage and Cultural Heritage.

The actions of the plan are organised under six themes:

- Community Engagement
- Education and Training
- Research, Monitoring and Conservation
- Galway County Council People, Property and Works
- Stakeholder Engagement and Collaborative Opportunities
- Climate Action

The implementation of the plan will be guided by the Galway County Heritage and Biodiversity Forum providing key expertise and oversight. The *Galway County Heritage and Biodiversity Plan* will be delivered through a series of annual work programmes which will be subject to available funding and resources.

The plan stands as a powerful testament to the vital contributions of Galway County Council's Biodiversity, Conservation and Heritage Offices, along with The Heritage Council and project partners. By working together, it paves the way for a vibrant and sustainable future for heritage and biodiversity through to 2030 and beyond.

Rahasane Turlough - *Ruth Hanniffy*





Wildflower Walk and Talk at Brigit's Garden - Seán Lydon

Introduction

Galway County Heritage and Biodiversity Plan 2024-2030 outlines the work of Galway County Council in collaboration with key stakeholders, comprising government agencies, organisations, groups and the wider community, to deliver heritage and biodiversity projects within the county. This plan is strategic and holistic in nature.

The plan was collaboratively developed by Galway County Council and Galway County Heritage and Biodiversity Forum, with extensive public consultation throughout the county.

Galway County Heritage and Biodiversity Forum provides advice on the preparation and implementation of the plan. While the plan is county-specific, it aligns with the *National Heritage Plan - Heritage Ireland 2030: A Framework for Heritage (2022)* and *Our Place in Time - The Heritage Council's Strategic Plan 2023-2028* and *Ireland's 4th National Biodiversity Action Plan 2023-2030*.

The plan builds on the achievements of previous plans and reflects changes in the heritage and biodiversity sectors at local, national and international levels in legislation policy and resources.

Funding to implement the plan is provided by Galway County Council and through external bodies such as The Heritage Council and the Department of Housing, Local Government and Heritage through a range of grant schemes and funding supports.

What is Heritage and Why is it Important?

Under the Heritage Act (1995) heritage is defined as including the following: monuments, archaeological objects, heritage objects, architectural heritage, flora, fauna, wildlife habitats, landscapes, seascapes, wrecks, geology, heritage gardens and parks, and inland waterways. This plan also provides for aspects of heritage that are unique to the county and which the people of County Galway consider to be part of their rich heritage, including the Irish language, folklore and folklife, placenames, traditional crafts, genealogy, local history and cultural heritage.

This rich heritage is vital as it preserves the county's history, culture and natural environment, fostering a sense of identity and continuity for future generations. Galway County Council and Galway County Heritage Forum acknowledge that heritage is an asset that requires careful management and conservation. Heritage encompasses aesthetic, historic, scientific, social, spiritual, political, national, cultural, educational, recreational and economic values. Both tangible and intangible heritage hold intrinsic value and support education, community pride, well-being, the economy, tourism and development, contributing to the overall welfare and sustainability of the county. Proper planning and sustainable development involve conserving all aspects of heritage, respecting its integrity and ensuring it is passed on to future generations.

Uncovering Maritime Heritage - *Meitheal Mara*





Red Squirrel - *Shane Coyle*

What is Biodiversity and Why is it Important?

Biodiversity, short for biological diversity, refers to the variety of life on Earth. It encompasses all living organisms and the ecosystems they form, extending beyond just wild plants and animals to include every living species and the communities they create. Biodiversity can be understood at four main levels:

- Genetic diversity:** this pertains to the genetic variations among individuals within a species, such as the differences between individual Hawthorn trees.
- Species diversity:** this involves the differences between various species, like the distinctions between a Sessile Oak tree, a Red Squirrel, a Marsh Fritillary butterfly and a Fly Agaric mushroom.
- Habitat diversity:** this includes the range of habitats and ecosystems that particular species inhabit and create, such as blanket bogs, calcareous grasslands, fixed dunes and sea caves.
- Landscape diversity:** this refers to the intricate and varied natural patterns formed by habitats and ecosystems.

Biodiversity provides the fundamental building blocks of ecosystems. An ‘ecosystem’ is defined as a community of living organisms interacting dynamically with their physical environment, including air, water, rocks and soil. Ecosystems can vary greatly in size, from a pond in Athenry or an orchard in Ballinasloe to large marine communities in Galway Bay or the extensive ecosystem of the Connemara Bog Complex. Smaller ecosystems can exist within larger ones, such as limestone pavement at the top of Knockma Woods or wooded islands in Lough Corrib. Some habitats found in Galway County, such as the turloughs of east County Galway, have particular importance on an international scale, as they are virtually unique to Ireland.

Overall, the Earth’s surface can be viewed as a complex network of interconnected ecosystems, where all elements of the environment – both living and non-living – interact and influence one another.

Brown Trout – Jan-Robert Baars



The Heritage and Biodiversity of Galway County

Overview

Galway County is the second largest county in Ireland with an area of 6,148 square kilometres, a coastline of 689 kilometres and many offshore islands. It borders five other counties and has a rich and diverse built, natural and cultural heritage. Part of the county's unique character is due to its great diversity of landscapes, seascapes and land uses. The landscape of west Galway is rugged and varied with its mountains, bogs, rivers, waterways and lakes, while limestone pavement with a myriad of drystone walls typifies the landscape of Oileáin Árann. The seascape is intricate; it includes many islands, peninsulas and deep coastal indentations. East Galway is characterised by a low-lying rolling topography of a fertile limestone plain, rich pastures, bogs and the Suck-Shannon system with its callows and Lough Derg, while the lowlands of the Burren are characterised by its unique karstic landscape and hydrology. The vast expanse of Lough Corrib roughly separates the east from the west and its water flows into the iconic inner Galway Bay.

Biodiversity and Natural Heritage

Galway County has a rich biodiversity with a great variety of habitats and species, including a number of characteristic habitats which are rare in Ireland and the rest of the world, such as turloughs, eskers, limestone pavement, river callows and machair grasslands. Flower-rich semi-natural grassland and raised and blanket bogs, which have largely been lost across much of their range, are still found here in areas which have not been intensively farmed or exploited. These habitats support a range of plant and animal species and are especially important for insects such as bees and butterflies and other invertebrates.

The wetlands of County Galway serve as a vital habitat for a diverse range of resident and migratory birds during the winter months. In the summer, Cuckoos, Swallows, and Swifts return to the area to breed. As of 2024, there are 19 breeding sites for Corncrakes in the county, underscoring its significance for these increasingly rare birds. Our coastline is long and varied and supports a tremendous variety of marine life from algae to invertebrates, fish, birds and large marine mammals. Seascapes vary from the dramatic cliffs of Oileáin Árann to sandy beaches and the famous Trá an Dóilín (An Cheathrú Rua), and the long fjord-like inlet of Killary Harbour which boasts some of the finest scenery in Ireland. The offshore islands, such as Inishbofin and Oileáin Árann, offer another dimension to the beauty of the Galway coastline. The clean waters of our rivers and lakes are home to a host of fish species, birds and Otters as well as rare invertebrates such as the White-clawed Crayfish and the Freshwater Pearl Mussel.

Sites of many of Galway's most important natural and semi-natural habitats are afforded protection under European and national legislation by way of designation as National Heritage Areas (NHAs), Special Areas of Conservation (SACs) and Special

Protection Areas (SPAs). Various species of flora and fauna are also protected under European and national legislation. Relevant international conventions, EU directives and domestic legislation pertaining to our heritage are listed in Appendix 1.

Built and Archaeological Heritage

Human interaction with the land and sea is evident from the earliest settlements up to the present, from archaeological remains to growing urban centres and cultivated land. The town and village streetscapes, old estate houses, prehistoric tombs, castles, tower houses, medieval churches and abbeys, traditional cottages and other vernacular buildings, field fences and gates, old bridges, piers and small harbours are some of the aspects of the built heritage that add to the character of the county. Drystone walls form another feature that contributes to our county's identity.

Cultural Heritage

The traditions of Galway County can be appreciated and enjoyed by everyone who lives here or visits the county. The Irish language, folklore and folklife, traditional crafts, customs and seasonal traditions, local history, traditional Irish music, sean nós singing and dancing, and Gaelic sports are important components of the cultural heritage of the county. Emigration has been a major part of the life cycle of the county; therefore, there is great interest in genealogy and our diaspora. Immigration is now also creating new and more diverse communities so that the heritage of the county continues to evolve.

An Evolving Heritage

Our heritage is all around us. It is not just about the past, but it is evolving every day and it is important that we manage it by making conscious and informed decisions about its future. This can best be achieved by having a clear and coherent strategy in place that recognises the value of our heritage to the quality of life of the people of Galway County and to its visitors.



Dawn Chorus - Mike Shaughnessy

What We Do:

Galway County Council Heritage Office

Galway County Council established a Heritage Office in the year 2000, as part of the Local Authority Heritage Officer Programme of The Heritage Council. The first Galway County Heritage Plan was published in 2004 and the first County Biodiversity Plan in 2008. The role of Galway County Council's Heritage Office is to:

- raise awareness of the rich heritage of Galway County;
- provide advice and information on heritage matters to Galway County Council and the public;
- collect data and undertake research on aspects of the heritage of Galway County;
- promote best practice and conservation in relation to heritage;
- develop heritage policy and
- implement *Galway County Heritage and Biodiversity Plan 2024-2030* in partnership with the Biodiversity Officer, Architectural Conservation Officer, Galway Community Archaeologist, other relevant staff in Galway County Council, Galway County Heritage and Biodiversity Forum, The Heritage Council, key stakeholders and communities.

The Heritage Council established the Heritage Officer Programme in 1999, through which it provides heritage programme funding and training support annually. The Heritage Officer post is a strategic partnership between Galway County Council and The Heritage Council under the Heritage Officer Programme and supported by the Department of Housing, Local Government and Heritage. The Heritage Officer provides advice on a wide range of Galway County Council projects and is a member of the Council's Culture Team and Climate Action Team.

Abbeygormican Church and Graveyard - Bernie Doherty





Galway Community Archaeologist

The Galway Community Archaeologist project has been in place in Galway County Council since 2006. The Community Archaeologist provides advice and support relating to archaeological monuments in the community. The Community Archaeologist is available to answer queries on maintenance, preservation, education and promotion of our diverse range of archaeology which spans over ten thousand years. The initiative is funded by the Heritage Council and Galway County Council.





Lesser Horseshoe Bats - Ruth Hanniffy

Galway County Council Biodiversity Office

The Biodiversity Office works at a county level, collecting data on biodiversity, carrying out conservation projects, developing policy, providing advice and information and raising awareness. Its key responsibilities include:

- creating the County Galway Biodiversity Working Group;
- writing the County Galway Biodiversity Plan;
- research, surveys and data collection;
- providing advice on biodiversity to local authority staff;
- community engagement and raising awareness;
- development of strategies, policies, and projects relating to wildlife, habitats and biodiversity;
- providing biodiversity expertise to groups such as the Galway County Heritage Forum and the Climate Action Team.
- implementing the *Galway County Heritage and Biodiversity Plan 2024-2030* in partnership with the Heritage Officer, Architectural Conservation Officer, Galway Community Archaeologist, other relevant staff in Galway County Council, Galway County Heritage and Biodiversity Forum, The Heritage Council, key stakeholders and communities.

The Galway County Biodiversity Officer offers guidance on a broad spectrum of issues within the local authority. The Biodiversity Officer is a member of the Galway County Council's Culture Team and Climate Action Team and is employed by Galway County Council in partnership with the Heritage Council, with support from the Department of Housing, Local Government and Heritage.

Galway County Council Architectural Conservation Office

The Architectural Conservation Office supports the protection and promotion of the intrinsic value of the built heritage in County Galway with particular emphasis on the co-existence of the built heritage with the unique landscapes of County Galway. Our built heritage reveals who we are and the craftsmanship in its construction celebrates the understanding of the materials sourced; going forward, the resilience and adaptability of our built heritage will be critical in the face of climate change.

Galway County Heritage and Biodiversity Forum

Galway County Heritage and Biodiversity Forum comprises a large number of sectoral interests, including local government, state agencies, non-governmental organisations, farmers and other landowners, local and regional development agencies, the education and heritage sector, and the community and voluntary sector. The Heritage and Biodiversity Forum was established in 2004 to provide advice and guidance regarding the development and implementation of the Galway County Heritage and Biodiversity Plan and develop and review annual programmes of work. This *meitheal* operates on a partnership basis, meeting at least twice a year to ensure the successful delivery and ongoing stewardship of the county's heritage and biodiversity.

Galway County Heritage and Biodiversity Forum – Seán Lydon



The Heritage Council



The Heritage Council is a statutory body established under the Heritage Act 1995 with a mission to engage,

educate and advocate to develop a wider understanding of the vital contribution that heritage makes to social, environmental and economic well-being. The Council's remit includes built, natural and cultural heritage, and the linkages between these. *The Heritage Council's Strategic Plan 2023-2028* guides engagement with local authorities, communities and other stakeholders.

Supporting the development of city and county Heritage and Biodiversity Action Plans is a crucial component of this work, as it sets out a strategic framework for the conservation, management and promotion of heritage and biodiversity at the local and regional level.

Heritage professionals within the local authority, including Heritage Officers and Biodiversity Officers, are employed in partnership with The Heritage Council under the auspices of the Heritage Officer and Biodiversity Officer Programmes, manage the heritage and biodiversity functions within a city/county in a coordinated manner, adopting an integrated approach to heritage and biodiversity that encompasses all aspects of heritage and biodiversity within the overall local authority service.

The Heritage Council plays a pivotal role in creating awareness, knowledge, management and conservation of heritage and biodiversity in Ireland. As an advisory body, it provides expertise, funds research, supports initiatives aimed at the conservation of heritage and biodiversity and actively engages with the planning process in relation to heritage and biodiversity at protected sites and in the wider countryside.

The Council works in collaboration with governmental and non-governmental organisations to facilitate the integration of heritage and biodiversity considerations into policy and practice.



Heritage Week on Inchnagoill, Lough Corrib – Marie Mannion



Madden's Forge, Athenry - *Hany Marzouk*

Heritage Council's Local Authority Liaison Officer

Local authorities are vital for preserving and promoting community cultural heritage. Establishing dedicated Heritage Teams within these authorities is essential for safeguarding local heritage and enhancing community engagement, while also utilising heritage for development, tourism and education.

To support this, The Heritage Council is creating a Local Authority Liaison Officer role to streamline team formation, training networks, grant management, heritage planning and project execution. Key objectives include:

- implementing national and local heritage policies;
- facilitating coordination between local authorities and The Heritage Council;
- providing administrative support during Heritage Team formation;
- aligning heritage initiatives with broader priorities and
- developing training programs for Heritage Team members.

Galway County Heritage and Biodiversity Plan 2024-2030

About the Plan

Galway County Heritage and Biodiversity Plan 2024-2030 is a framework document designed to help achieve a vision for heritage and biodiversity in Galway County over a six-year period. Galway County Heritage and Biodiversity Forum will collaborate with the Galway County Council's Heritage, Biodiversity and Architectural Conservation Offices to coordinate and deliver the plan. This new Heritage and Biodiversity Plan aims to build upon the accomplishments of the previous plans, while considering changes in legislation, policy and climate.

Galway County Heritage and Biodiversity Forum includes sectoral interests such as local government, state agencies, non-governmental organisations, farmers and other landowners, local and regional development agencies, the education and heritage sector, and the community and voluntary sector.

The Forum was first established in 2004 and provides advice and guidance on the development and implementation of Galway County Heritage and Biodiversity Plans and develops and reviews annual programmes of work.

As with the development of previous Galway County Heritage and Biodiversity plans, the Forum established three working groups to assist in the development of the 2024-2030 plan. The membership of each working group was drawn from the Forum membership.

Each working group considered the existing Heritage and Biodiversity Plan, all submissions received and feedback from the public consultation process and brought their insights and experience to the discussions and negotiations. The Forum approved the final draft actions and adopted the plan on 25 October 2024. This plan was presented to Galway County Council Management Team on 11 November 2024.

It is an objective in the *Galway County Council Corporate Plan and Galway County Development Plan 2022-2028* to support the implementation of the *Galway County Heritage and Biodiversity Plan 2024-2030*.

The plan was endorsed by the Climate Action, Biodiversity and Heritage Strategic Policy Committee on 27 November 2024. *Galway County Heritage and Biodiversity Plan 2024-2030* was adopted by the Elected Members of Galway County Council on 16 December 2024.

The working groups of the Heritage and Biodiversity Forum considered the following aspects of heritage and biodiversity during the development of the plan:

Cultural Heritage

- Archaeological objects • Heritage objects • The Irish language • Folklore, oral heritage & folklife • Genealogy • Museums & archives • Local history • Heritage education • Place names • Intangible cultural heritage • Floating heritage • Maritime heritage • Underwater cultural heritage • Heritage trails • Digital & analog heritage • Traditional crafts

- Flora & fauna • Wildlife habitats • Landscapes • Seascapes • Geology & soils • Inland water courses • Ecosystem services • Natural capital • Traditional land-use practices

Biodiversity and Natural Heritage

- Monuments • Architectural heritage • Heritage gardens and parks • Wrecks • Industrial heritage • Archaeological heritage • Inland waterways • Landscapes • Seascapes • Underwater archaeological heritage

Built & Archaeological Heritage

The working groups of Galway County Heritage and Biodiversity Forum



Vision for Heritage and Biodiversity in Galway County

The rich heritage and biodiversity of Galway County will be cherished, valued, protected, conserved and enhanced in a manner that respects the past, addresses the present needs and ensures sustainability for future generations. It is envisaged that benefits for people, the climate and the county are ensured, ecosystem degradation will be reversed and there is resilience against future threats such as climate change.

Tobar Padraig, Monivea - Marie Mannion



Aims of Galway County Heritage and Biodiversity Plan 2024-2030

.....
The aims of Galway County Heritage and Biodiversity Plan 2024-2030 are to:

- 1. preserve, protect and enhance Galway County's biodiversity and built, archaeological and cultural heritage;**
- 2. promote awareness and engagement and**
- 3. support and collaborate with a wide range of partners, including communities, in an inclusive and sustainable manner.**

Guiding principles

The formation of the plan was guided by the following principles:	
Integrated Heritage and Biodiversity Approach:	Galway County's heritage and biodiversity assets, encompassing natural, built, archaeological and cultural elements (both tangible and intangible), necessitate an integrated and holistic heritage approach to ensure their appropriate protection, conservation, management and promotion.
Supporting and Empowering Communities:	The vital role of communities in caring for and promoting heritage and biodiversity is acknowledged, with efforts directed towards supporting and empowering communities in their custodianship of local heritage and biodiversity. Through the implementation of the Heritage and Biodiversity Plan, Galway County Heritage and Biodiversity Forum will endeavour to build the capacity of communities to engage with and participate in heritage initiatives across the county.
Sustainable Development:	The United Nations 2030 Agenda for Sustainable Development and the 17 Sustainable Development Goals (SDGs) are embraced. Sustainable development is understood as development that meets the needs of the present without compromising the ability of future generations to meet their own needs. The principles of sustainable development, proper planning and best practice were applied to the actions developed in this plan.
Diversity and Inclusion:	The role of heritage and biodiversity in embracing diversity and supporting social inclusion within communities is recognised and cognisance is taken of the Public Sector Equality and Human Rights Duty. Efforts will be made to ensure that all events related to this plan reflect the interests of the socially and culturally diverse community of the county and are accessible to all citizens, regardless of age, background, physical or emotional needs.
Gaeilge:	The Irish language is an important corner stone of our heritage and understanding of biodiversity. The actions contained in this plan reflect this importance.
Climate Action:	<p>Climate change and biodiversity loss are central to all activities and inform every aspect of this plan. Decisions will consider their implications across organisational practices, partnerships and community engagements. Galway County's heritage and biodiversity is crucial in addressing climate change. As custodians, there is a commitment to use available resources to respond to the climate crisis and protect heritage and biodiversity while promoting innovative solutions for future challenges.</p> <p>This aligns with the government's vision of leading in climate change mitigation and resilience.</p>



Bi-lingual Garda Workbook Launch – Seán Lydon

The formation of the plan was guided by the following principles:

Galway County Development Plan 2022-2028:

Among the strategic aims of *Galway County Development Plan 2022-2028* is to support the implementation of the *Galway County Heritage and Biodiversity Plan 2024-2030* in relation to the promotion and protection of its Cultural Heritage and to continue to implement actions of the National Heritage Plan, the National Biodiversity Plan and Galway County Heritage and Biodiversity Plan in partnership with all relevant stakeholders.

Sustainable Travel:

Integrating sustainable and inclusive travel initiatives into the *Galway County Heritage and Biodiversity Plan 2024-2030* was a key theme in public consultation. By promoting eco-friendly transportation to heritage sites and events, the plan aims to reduce carbon emissions and improve accessibility. Prioritising these strategies will foster significant progress in combating climate change while boosting public engagement in Galway’s heritage and biodiversity activities.

The Aarhus Convention and Public Consultation:

The Aarhus Convention establishes essential rules to enhance public involvement in environmental issues, focusing on three pillars: access to environmental information, public participation in decision-making and access to justice. Public participation was vital in shaping the new Heritage and Biodiversity Plan, ensuring it reflected the community’s views and aspirations for the next six years. Contributions came from the public, communities and stakeholders through an online survey, public consultation events and workshops on heritage, biodiversity and the arts, along with written submissions.



Roundstone 200 Conference – Marie Mannion

Process of Forming the Plan

The development of the plan commenced in April 2023 and involved a series of activities over the subsequent months leading up to its adoption. This included meetings with the Galway County Heritage and Biodiversity Forum, discussions with three working groups, internal staff meetings, consultation sessions, online pre-draft consultations and art workshops.

Stages of developing the plan

- 1. Preparation**
Review of legislation and policy, review of *Galway County Heritage and Biodiversity Plan 2017-2022*. Review of actions delivered.
- 2. Vision and objectives**
New members were added to the Heritage and Biodiversity Forum. This was agreed with the Forum, as were the main aims, objectives and structure of the plan. Three working groups were formed.
- 3. Public engagement**
Extensive public engagement was held to capture the inputs of a wide range of groups across the entire county. Online pre-draft consultation was conducted in partnership with the *Galway County Climate Action Plan 2024-2029*, in-person workshops were held in partnership with community groups and art

workshops were facilitated to capture the voices of those not often heard in the traditional public consultation setting. Input to the plan was received by 447 individuals and organisations, including 117 people that participated in the art pre-draft public consultation workshops, 141 who attended the in-person pre-draft consultations, the 177 submissions through online questionnaires and 12 written submissions.

4. Plan development

The feedback from the consultation process was reviewed and analysed. The points raised were considered by the working groups during meetings held from July to September 2024 and fed into the development of actions. The Actions, Objectives and Key Performance Indicators were developed in a workshop setting, in person and online by the Heritage and Biodiversity Forum over the three months. Appropriate Assessment and Strategic Environmental Assessment Screening formed an iterative part of this process.

5. Plan review and approval

The plan was reviewed and approved by the Forum in October 2024. This was then presented to the Senior Management Team 5 November 2024, the Climate Action, Biodiversity and Heritage SPC on 27 November 2024 and presented to the elected members and adopted on 16 December 2024.

6. Publication

The plan was translated, designed, published and launched in 2025.

Galway Region of Gastronomy Heritage Project - *Hany Marzouk*





Wildflower Swatch launch - Seán Lydon

Legislative and Policy Context

The Heritage Act, 1995, defines heritage as including monuments, archaeological objects, heritage objects, architectural heritage, flora, fauna, wildlife habitats, landscapes, seascapes, wrecks, geology, inland waterways and heritage gardens and parks. The *Galway County Heritage and Biodiversity Plan 2024-2030* provides for the aspects of heritage that are defined in the Act.

Galway County Council Corporate Plan 2020-2024 provides the framework to enable Galway County Council to guide the strategic direction and development of the County of Galway for the period 2020-2024. The strategic goals and supporting strategies identified in the plan support Galway County Council in carrying out its functions, prioritising its actions and assessing its progress. The core values underpin and guide the delivery of local authority services over the period 2020-2024, while the mission reflects the importance of enhancing the quality of life for people of County Galway by leading and strengthening community and economic development and delivering efficient and sustainable services.

Galway County Development Plan 2022-2028 serves as the legal and strategic land use management plan for the county. It outlines an overall strategy for proper planning and sustainable development within the county of Galway. The *Galway County Heritage and Biodiversity Plan 2024-2030* is a policy/objective of *Galway County Development Plan* and complements the County Development Plan and other statutory plans. Its purpose is to promote the policies and objectives outlined in these plans while providing

practical measures for identifying, protecting and managing our local heritage and biodiversity. *Galway County Heritage and Biodiversity Plan 2024-2030* emphasises the importance of community involvement in achieving these objectives.

Galway County Local Economic and Community Plan (LECP) 2024-2030. The Galway County LECP is a six-year plan that aims to promote sustainable economic and community development across Galway County.

The *Sustainable Development Goals* (SDGs) were universally adopted by all United Nations member states in 2015 as part of the *2030 Agenda for Sustainable Development*. This agenda outlines a 15-year plan to achieve the goals, which serve as a blueprint for creating a better and more sustainable future for all.

In the *Programme for Government: Our Shared Future*, Ireland has made substantial commitments to its national heritage and biodiversity. These commitments encompass ongoing support for Heritage Officers in domains such as heritage education, health, well-being and citizen science. Additionally, the plan aims to expand the presence of biodiversity and conservation officers within local authorities.

Heritage Ireland 2030, Ireland's National Heritage Plan, was launched in February 2022. It is based on a vision of our heritage, in all its forms, being a focal point of local and national discourse, valued by all and devoted to and protected for future generations.

Our Place in Time, The Heritage Council's Strategic Plan for 2023-2028, was launched in February 2023. The plan aims to celebrate and promote Ireland's rich heritage while also addressing the challenges that must be overcome to safeguard it for the future.

Connemara Blue Dot Project – Peter Cutler





Peacock Butterfly - Jan-Robert Baars

The *All-Ireland Pollinator Plan 2021-2025* is a five-year roadmap aimed at supporting bees, other pollinating insects and biodiversity. It builds on the previous plan (2015-2020) and involves more partners working together to deliver 186 actions across six objectives. These objectives include making farmland, public land and private land more pollinator-friendly, supporting honeybees, conserving rare pollinators and strategically coordinating the plan. The plan seeks to strengthen pollinator-friendly management of public parks and green spaces, integrate the Pollinator Plan into future county/city development or biodiversity plans and raise awareness of pollinators and existing initiatives at local authority level.

The plan is voluntary and organisations commit to funding their own actions. Its purpose is to protect Ireland's pollinators and biodiversity, contributing to a healthier environment.

The *4th National Biodiversity Action Plan 2023-2030* was published in January 2024 and sets the national biodiversity agenda. It contains 194 actions within the framework of five strategic objectives:

1. Adopt a whole-of-government, whole-of-society approach to biodiversity.
2. Meet urgent conservation and restoration needs.
3. Secure nature's contribution to people.
4. Enhance the evidence base for action on biodiversity.
5. Strengthen Ireland's contribution to international biodiversity initiatives.

The *EU Regulation on Nature Restoration* (often known as the ‘Nature Restoration Law’) came into effect on 18 August 2024. This legislation is a key element of the EU Biodiversity Strategy for 2030 and requires Member States to develop and implement national restoration plans for nature to ensure the implementation of its provisions. The Regulation stipulates legally binding restoration targets for Member States to restore ecosystems, habitats and species across the EU’s land and sea areas both inside and outside protected areas.

In addition to the above, *Galway County Heritage and Biodiversity Plan 2024-2030* has drawn insights from *Project Ireland 2040*; the *National Development Plan*; the *National Peatlands Strategy 2015*; the *National Landscape Strategy 2015-2025*; *Places for People – Government Policy on Architecture*; *Framework and Principles for the Protection of Archaeological Heritage*; and the *Creative Ireland* programme.

Delivery of the Plan

Working groups within the County Galway Heritage and Biodiversity Forum convene when needed to develop specific actions and initiatives. The members of the Forum and working groups are listed in Appendix 4.

Working groups can also invite individuals who are not members of the Forum but have knowledge and expertise related to a specific action or initiative in relation to project development.

Each year the Forum proposes and considers actions that it hopes to deliver during the following year. Proposals may also come from local heritage organisations, schools or community groups that have identified a particular heritage need at local level, and they may also come from academic institutions and government organisations.



Biodiversity Field Trip – University of Galway



Mute Swans – Ruth Hanniffy

Collaborative Approach

Since 2002, collaboration with as many individuals and organisations as possible has been central to the development and delivery of Galway County Heritage and Biodiversity plans. This plan follows the same approach, aiming to be delivered through strategic partnerships to ensure the active involvement of the people of Galway County. The Forum is committed to integrating social inclusion principles and public sector duty into every aspect of the plan's implementation. Extensive consultation was undertaken to encapsulate this commitment and has been a cornerstone in the plan's development, detailed in Appendices 6,7,8 and 9.

Over the course of this plan, the Forum aims to undertake a variety of projects, both large and small, covering numerous aspects of heritage and biodiversity across the five municipal districts. Priority will be given to actions that align with relevant legislation and policy as outlined in Appendix 1 this plan. The annual work plans will seek to explore opportunities for synergies and collaboration with members of the Forum and others in the delivery of actions and projects.

Partnership with key stakeholders at local, regional, and national levels will be pursued to deliver the priorities identified in the *Galway County Heritage and Biodiversity Plan 2024-2030*. Support for the custodianship of heritage in public and private ownership, as well as in the care of communities, is a commitment. The related and cross-cutting impacts of climate change and biodiversity loss will be central to the delivery of the plan.

Timeframe

The *Galway County Heritage and Biodiversity Plan 2024-2030* outlines actions for a six-year period. Each year, the Forum will establish a detailed work programme based on the actions specified in the current plan, which will include a timeline for implementation, identification of funding sources, proposed projects under the actions and designation of lead and associate partners. This process will depend on the availability of resources and funding for that particular year.

Finance and Resourcing the Plan

The Forum acknowledges that the economic climate and various factors may evolve during the duration of the plan. As a result, some proposed actions may not be realised within the lifespan of this plan due to financial and other constraints.

Community Archaeology Heritage Week Event - *Hany Marzouk*



Current projections indicate that a total budget of €14,772,978 is expected to be secured by the Heritage Office, Architectural Conservation Office and Biodiversity Office to support the implementation of this plan. Additionally, other departments within Galway County Council, such as Archives and Library Services, Climate Office, Arts Office, Roads and Transportation, Housing, Planning, Urban and Rural Regeneration, Community, Environment Section, Sports Partnership, Oifigeach Forbartha na Gaeilge, and Corporate Services, will incur further expenditures related to heritage and biodiversity.

The Heritage Council provides partial funding for implementation of local authority Heritage and Biodiversity Plans. To qualify for this funding the Heritage and Biodiversity Plan must be agreed and adopted by the elected members of Galway County Council. Funding will also be sought annually from Galway County Council's own budget, various government departments and from partner organisations. Some partners may provide benefit in kind such as expertise and office space.

Communication

Galway County Heritage and Biodiversity Forum considers that consultation and communication have a central role to play in the effective development and delivery of the *Galway County Heritage and Biodiversity Plan 2024-2030*. The Forum is committed to having open channels of communication among all stakeholders and with the public in the implementation of this plan. Furthermore, the projects and actions that emanate from the plan will be communicated widely through our existing networks, social media channels and reports.

Monitoring and Evaluation

Galway County Heritage and Biodiversity Forum will monitor the annual work programme and progress will be evaluated annually.

The Forum will seek to ensure that all reports, surveys and studies carried out under the auspices of the *Galway County Heritage and Biodiversity Plan 2024-2030* are made as widely available as possible. In accordance with this guiding principle, an end-of-year report which gives an account of the actions undertaken is submitted to the Forum, Galway County Council and The Heritage Council. Project outputs will be made available in a digital format where practical. The delivery of actions and initiatives takes cognisance of the budgets that are available.



Kilmacduagh - Robert Riddell

Work of Previous Plans

The *Galway County Heritage and Biodiversity Plan 2017-2022*, *Galway County Heritage Plan 2010-2016* and the *Galway County Biodiversity Plan 2008-2013*, through the cooperation and hard work of the Galway County Heritage Forum, the Galway County Biodiversity Steering Group and other partner organisations, undertook over 100 heritage and biodiversity initiatives during the lifetime of both plans. Case studies of previous initiatives are detailed in Appendix 5.

Galway County Heritage and Biodiversity Plan 2017-2022 leaves behind a legacy of enhanced awareness, active participation and a strengthened foundation for ongoing heritage conservation and biodiversity efforts in the years to come. For a more comprehensive listing of Galway County Heritage and Biodiversity Plan 2017-2022 projects and activities please see Galway County Council's Annual Reports: <https://www.galway.ie/en/services/yourcouncil/corpdocs/>



Actions, Objectives and Key Performance Indicators

The actions of the *Galway Heritage and Biodiversity Action Plan 2024 - 2030* are listed in the following table. Actions have been grouped under six strategic objectives categories listed below for Biodiversity, Cultural Heritage and Built and Archaeological Heritage. Given the nature of the plan, actions will often overlap and apply to more than one category.

Biodiversity Actions

Code	Action	Objective	Key Performance Indicator
Community Engagement			
BD 1.1	Deliver a free Biodiversity Community Engagement event in each of the five Municipal Districts (MDs) in Galway County every year.	To consult, advise and work with community groups to give them a voice, to encourage and facilitate active participation and collaboration.	The annual event held in each of the MDs.
BD 1.2	Encourage and support individuals, groups, faith communities, non-governmental organisations (NGOs) and the education sector in applying for biodiversity funding and resources and catalogue the relevant funding opportunities.	To encourage and support individuals, groups, NGOs and the education sector in applying for funding and build capacity within the biodiversity sector.	The annual number of applications supported. The creation of a funding directory.
BD 1.3	Consult and work with communities using an inclusive and collaborative approach.	To support the invaluable role of communities as stewards of biodiversity throughout the county.	The number of community groups engaged with per annum.
BD 1.4	Provide biodiversity information to community groups through the Galway County Public Participation Network (PPN).	To integrate biodiversity into the objectives of community groups and organisations in all sectors throughout the county.	The number of engagement sessions held per annum. The number of PPN Newsletters with biodiversity content per annum.
BD 1.5	Highlight and celebrate the work of the community in developing and managing spaces for nature such as community gardens, wetlands and nesting sites.	To raise awareness of the work of communities through multi-media platforms and the Irish Community Archive Network (iCAN).	The number of community projects highlighted and celebrated on council media platforms per annum.
BD 1.6	Create an accessible directory of organisations and groups promoting, managing and conserving biodiversity.	To strengthen connection, communication and collaboration between all stakeholders.	Creation of an online directory of biodiversity stakeholders.

Code	Action	Objective	Key Performance Indicator
Community Engagement			
BD 1.7	Enable Tidy Town and other groups to develop local biodiversity action plans through the provision of training and funding opportunities.	To develop local biodiversity action plans with communities in line with the <i>All-Ireland Pollinator Plan 2021-2025</i> and the <i>National Biodiversity Action Plan 2023-2030</i> and other relevant guidance documents.	The number of groups with a current biodiversity action plan, and the Galway County plans uploaded on the Actions for Biodiversity website. The number of training sessions on developing Biodiversity Action Plans over the course of this plan.
BD 1.8	Create awareness of existing and potential biodiversity citizen science projects, develop relevant survey methodology, technology and training where needed.	To promote, encourage and facilitate public participation in citizen science projects within the community to create a better connection with and understanding of biodiversity.	The number of uses of the Environmental Science Kits for Ecological Recording (ESKER) from Galway County Libraries; the number of citizen science schemes promoted by Galway County Council; the annual number of citizen science training events held in the county.
BD 1.9	Promote best practice guidance relating to biodiversity, such as the <i>All-Ireland Pollinator Plan</i> resources and <i>Wildlife in Buildings</i> .	To inform the community on how best to conserve and restore biodiversity in Galway County.	The number of guidance documents promoted over the course of the plan.
BD 1.10	Host a biennial Biodiversity Conference in Galway County.	To create a networking and learning opportunity for all.	Three Biodiversity Conferences hosted over the course of the plan.
BD 1.11	Incorporate biodiversity into creative arts projects in Galway County and develop biodiversity-themed creative arts events with the community.	To increase the appeal and accessibility of biodiversity outreach events in the community.	The number of projects and outreach events per annum incorporating music, visual art, film, performance art including dance, poetry, photography, etc.

Code	Action	Objective	Key Performance Indicator
Community Engagement			
BD 1.12	Seek to appoint two Community Biodiversity Liaison Officers.	To support communities in developing and delivering biodiversity education, conservation and restoration projects in both east and west of the county.	The appointment of two Community Biodiversity Liaison Officers.
BD 1.13	Highlight and promote the work of the Galway County Heritage, Biodiversity, Architectural Conservation, Climate Action, Arts, Culture, Library, and Archives services.	To raise awareness of the work being undertaken by Galway County Council.	The number of promotional activities online and in person per annum.
BD 1.14	Take cognisance of Galway County Council's Scéim Teanga, in communications, actions, projects, activities, resources and communications.	To promote and encourage the use of Gaelge as a living language.	The number of projects, activities and resources incorporating Gaelge per annum.



National Tree Week event – Jacinta Fahy

Code	Action	Objective	Key Performance Indicator
Education and Training			
BD 2.1	Provide opportunities for interactive learning and knowledge-sharing between different groups and organisations.	To facilitate community-based learning opportunities and knowledge-sharing.	The number of events held per annum that facilitate more than one group or organisation.
BD 2.2	Keep Galway County Council staff abreast of best practice and all legislative requirements in relation to biodiversity.	To keep staff aware of the current requirements and best practice recommendations.	The numbers of circulars issued annually on new legislation to all staff.
BD 2.3	Build expertise with Galway County Council management team, elected members and staff by identifying training needs and organising biodiversity-relevant training.	To educate management, staff and elected members about the importance of biodiversity and the legal obligations to protect it.	The number of training events delivered over the course of this plan.
BD 2.4	Provide biodiversity training to Galway County PPN and other community groups.	To integrate biodiversity into the work of community groups in all sectors of Galway County.	The number of training sessions provided annually to PPN and community groups.
BD 2.5	Encourage businesses to recognise their biodiversity responsibilities and the commercial opportunities from biodiversity projects and changing consumer concerns.	To educate and support businesses to enable sustainable and effective engagement with biodiversity.	The number of annual business-targeted biodiversity engagements per annum.
BD 2.6	Assist schools, third-level education institutions, vocational training centres and other education and training providers with biodiversity education and training.	To support biodiversity education in the education sector.	The number of engagements with educators per annum.

Code	Action	Objective	Key Performance Indicator
Education and Training			
BD 2.7	Promote and support the Heritage in Schools programme.	To provide specialist biodiversity education to school children.	The number of Galway County schools engaging with the Heritage in Schools programme and biodiversity experts per annum.
BD 2.8	Support libraries delivering and promoting biodiversity education and resources.	To support libraries delivering biodiversity education in a community setting.	The number of biodiversity-themed events hosted by libraries and the number of resources and advice provided by the Biodiversity Office per annum.



Discover the Beach event - Mike Shaughnessy

Code	Action	Objective	Key Performance Indicator
Research, Monitoring & Conservation			
BD 3.1	Collect, collate and procure data and research on biodiversity in Galway County.	To enhance the opportunities for informed decisions.	The number of surveys and reports commissioned per annum.
BD 3.2	Maintain and develop links with researchers, educational institutions, libraries and other organisations and authorities.	To facilitate communication between educational institutions and biodiversity stakeholders.	The number of collaborations per annum.
BD 3.3	Ensure that biodiversity data gathered from projects funded by Galway County Council is shared with all relevant organisations, and that the data sets complies with the national open-data policy.	To facilitate the sharing of knowledge and biodiversity data sets.	The number of data sets shared with relevant bodies. The number of project briefs with inclusion of Open Data clauses.
BD 3.4	Develop ecological network maps of the county and work to increase connectivity across the networks and collaborate with neighbouring jurisdictions.	To identify, enhance and protect key biodiversity sites and their linkages in the county.	The number of ecological network maps developed over the course of this plan.
BD 3.5	Support the assessment, protection and restoration of Annex 1 Priority habitats outside designated sites to inform planning decisions.	To determine the conservation status of Annex 1 Priority Habitats outside designated areas and support their conservation and restoration.	The number of sites identified and assessed per annum.
BD 3.6	Support the conservation of marine habitats and ecosystems in compliance with national plans and policies.	To support the restoration and conservation of habitats within the county that support a wide range of marine species, and mitigate against the impacts of climate change, e.g. rising sea levels.	The number of marine conservation projects supported over the course of the plan.

Code	Action	Objective	Key Performance Indicator
Research, Monitoring & Conservation			
BD 3.7	Support the conservation of priority species for Galway County, including but not limited to, Irish Lady's-tresses, Black Poplar, Shining Sickle Moss, Freshwater Pearl Mussel, Marsh Fritillary, Barn Owl, Hen Harrier, Merlin and Lesser Horseshoe Bat.	To support and partake in a national, coordinated approach to the conservation of priority species.	The number of actions delivered or supported to conserve priority species per annum.
BD 3.8	Support initiatives under the Water Framework Directive that contribute to the restoration of biodiversity of water bodies, including measures to support fish migration and Blue Dot water bodies.	To protect and improve the status (including biology, water quality and hydromorphology) of all waters in Galway County.	The number of projects and initiatives undertaken with the Local Authorities Water Programme and other key stakeholders.
BD 3.9	Develop educational programmes and community initiatives that raise awareness and foster stewardship of our geological heritage, including our rocks, physical landscapes and soils.	To protect and raise awareness of our geological heritage and highlight the links between geodiversity and biodiversity.	The number of publications and events held per annum that showcase the wealth of our geological heritage.
BD 3.10	Raise awareness of the ecological importance of stone walls and structures for biodiversity.	To protect and enhance landscape connectivity by raising awareness of the ecological benefits of stone walls and structures for biodiversity.	The number of social media posts, workshops, guided walks and educational materials that raise awareness of ecological importance of stone walls and structures per annum.
BD 3.11	Promote best-practice guidelines to address the potential impact of artificial lighting on wildlife. Apply these guidelines to the planning and development of new projects, lighting upgrades (retrofitting), and situations where there is evidence of existing artificial light impacting wildlife.	To protect and enhance our nocturnal biodiversity.	The number of projects and initiatives undertaken annually that promote and align with best practice with Dark Skies guidelines.

Code	Action	Objective	Key Performance Indicator
Galway County Council: People, Property and Works			
BD 4.1	Integrate biodiversity into all relevant aspects of the work of Galway County Council.	To deliver on a whole-of-council approach to the biodiversity crisis.	Formation of an Internal Cross-Departmental Biodiversity Working Group; the number of meetings of the Group per annum.
BD 4.2	Facilitate the consideration of biodiversity at the earliest stages in the design and development of new plans, strategy documents and projects.	To deliver plans, projects and strategies that support and include biodiversity in their considerations.	Creation of a biodiversity checklist for project managers that will be reviewed annually.
BD 4.3	Develop resources and supports to inform decision makers in relation to biodiversity legislation.	To ensure staff have access to biodiversity information and legislation, enabling informed decisions.	The number of resources developed for staff over the course of this plan.
BD 4.4	Seek to increase the staff resources in the Biodiversity Office of Galway County Council.	To enhance resources for the Biodiversity Office to meet the needs of the county.	The amount of enhanced resources attained over the course of this plan.
BD 4.5	Undertake actions to meet and deliver on requirements as set out by the All-Ireland Pollinator Plan Council Partner agreement.	To support and promote All-Ireland Pollinator Plan Actions for Councils and monitor resulting changes.	The number of All-Ireland Pollinator Plan actions/ projects undertaken; GIS mapping of areas managed for pollinators and establish annual monitoring for key sites.
BD 4.6	Promote the reduction of pesticide use on Galway County Council property.	To reduce pesticide usage by Council staff and contractors operating on behalf of Galway County Council.	Review, develop and promote the Sustainable Plant Management Plan annually.
BD 4.7	Update and implement Galway County Council Invasive Alien Species (IAS) Strategy.	To create a management system for the mapping, treatment and monitoring of IAS and a culture of biosecurity amongst council staff.	The development of an Information Management System for Invasive Alien Species on Council land.
BD 4.8	Continue to restore and enhance biodiversity of Galway County Council parks and public spaces.	To improve habitat quality on recreational public lands and provide opportunities for the public to connect with nature and learn about biodiversity.	The number parks and public spaces managed for biodiversity.

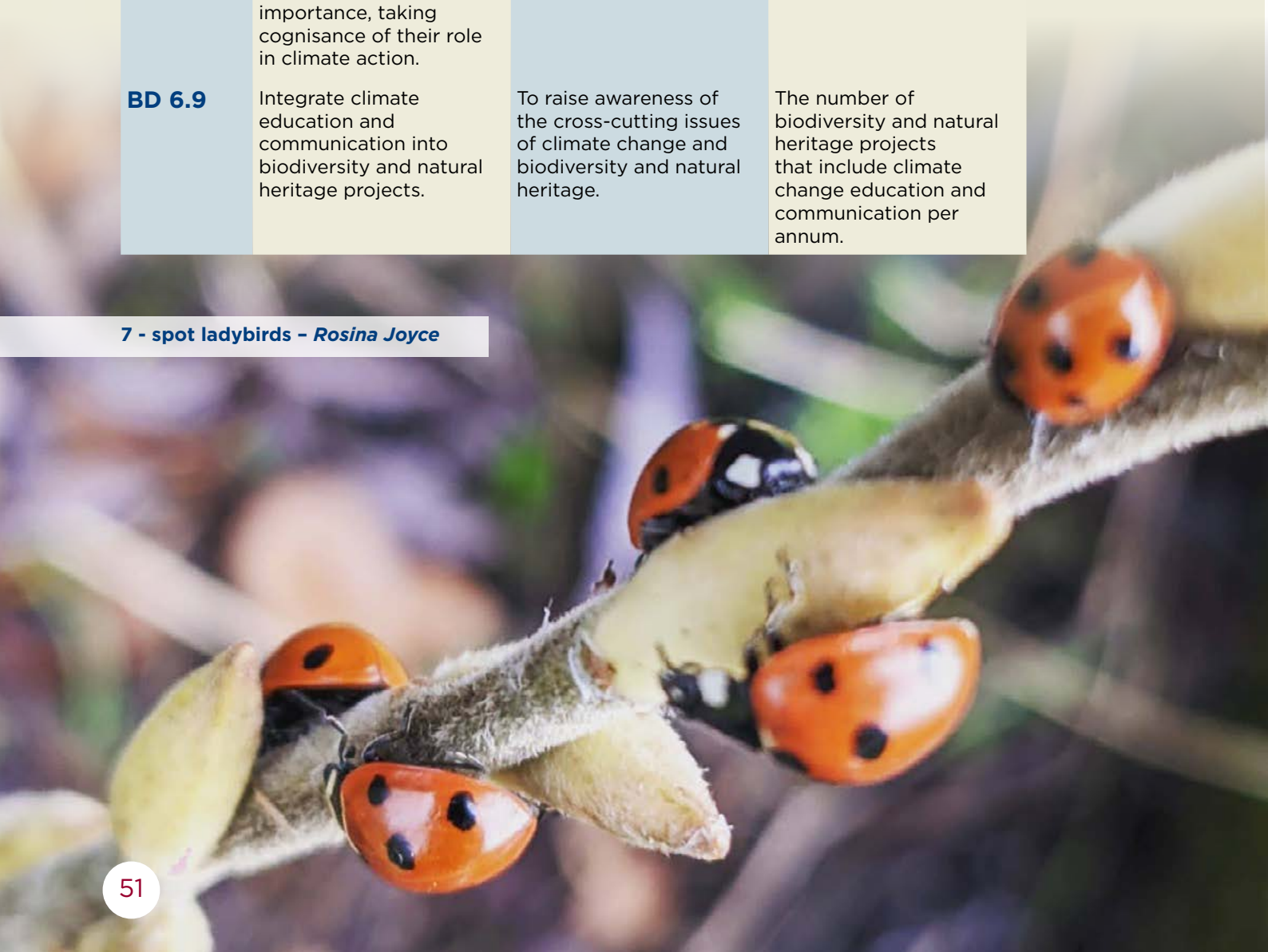
Code	Action	Objective	Key Performance Indicator
Galway County Council: People, Property and Works			
BD 4.9	Conduct a Biodiversity Audit of Galway County Council land banks and assets.	To assess the conservation value and restoration potential of Galway County Council landbanks.	Audit completed.
BD 4.10	Safeguard existing nesting sites and enhance nesting opportunities for birds, bats and invertebrates in conservation projects, new developments and redevelopments.	To increase the nesting habitats for birds, bats and invertebrates in our built environment.	The number of guidance documents and resources produced over the lifetime of the plan for biodiversity-friendly practices in relation to nesting sites; the number of local authority developments incorporating nesting opportunities each year.
BD 4.11	Raise awareness of biodiversity net gain (BNG) for consideration in Galway County Council plans, strategies and policies.	To reduce the impact of development on biodiversity and to create a shared responsibility for the conservation and restoration of biodiversity.	The number of plans and policy documents produced and the number of training events held by Galway County Council that articulate the principles of BNG over the course of this plan.
BD 4.12	Continue to develop the Biodiversity Office's projects and resources on Galway County Council digital platforms.	To maximise the potential of digital platforms and technologies to disseminate biodiversity information and materials.	The annual total number of users and page views.
BD 4.13	Preparation, adoption and dissemination of a Galway County Council Tree and Hedgerow Management Plan.	To protect trees and hedgerows in Galway County for the benefit of biodiversity, landscape character and mitigating against climate change.	The preparation and adoption of Tree and Hedgerow Management plan.
BD 4.14	Identify Locally Important Biodiversity Sites (LIBS) in Galway County according to Heritage Council guidelines and map and safeguard them through Galway County Council policy and plans.	To identify and protect LIBS in Galway County.	The production of a LIBS GIS layer by 2026. LIBS training delivered to Galway Council County staff by 2026.

Code	Action	Objective	Key Performance Indicator
Stakeholder engagement and collaborative opportunities			
BD 5.1	Continue to engage and collaborate with the farming and agricultural sector.	To ensure effective action on biodiversity in the farming and agricultural sector.	The number of engagements with the farming and agricultural sector per annum.
BD 5.2	Facilitate discussions between stakeholders and government departments and agencies about land-use policies, legislation and management practices.	To share knowledge and promote collaboration between all land-use stakeholders.	The number of stakeholder engagements, including meetings of Biodiversity and Heritage Forum, held annually.
BD 5.3	Collaborate with other members of the Biodiversity Officers Network (BON) on the delivery of biodiversity projects and campaigns.	To work together with other local authorities and the Heritage Council to bring the expertise and knowledge of the BON to projects and plans in Galway County.	The number of collaborations with other BON members per annum.
BD 5.4	Seek funding opportunities, benefit-in-kind opportunities and work with project partners to achieve the aims of the National Biodiversity Action Plan.	To leverage and maximise funding and resources for the benefit of the county's biodiversity.	The amount of funding obtained per annum.
BD 5.5	Promote and participate in biodiversity events such as National Biodiversity Week, National Hedgerow Week, National Heritage Week, World Wetlands Day and other themed events and programmes.	To showcase and promote the county's biodiversity and facilitate active engagement through new and established annual event programmes.	The number of events held and/or promoted per annum.

Code	Action	Objective	Key Performance Indicator
Climate Action			
BD 6.1	Undertake a Biodiversity and Natural Heritage and Climate Change Risk Assessment to develop appropriate adaptation and mitigation methodologies for biodiversity assets in the Council's ownership.	To coordinate collaborative, evidence-based mechanisms to develop resilience, adapt or mitigate the impacts of climate change on the natural heritage and biodiversity of Galway County.	The completion of the Risk Assessment in the course of this plan.
BD 6.2	Support and develop citizen science projects as a means of monitoring climate change impacts on Galway County's biodiversity assets.	To raise awareness and understanding of the vulnerability of Galway County's biodiversity to climate change.	The number of citizen science projects undertaken that relate to climate change and biodiversity over the course of this plan.
BD 6.3	Co-operate with other agencies in the assessment of the potential for climate change to impact on flora, fauna, wildlife habitats, landscapes, seascapes, geology and soils, inland waterways, ecosystem services, natural capital and traditional land-use practices.	To minimise the impacts of climate change on the biodiversity assets of the county.	The number of collaborations and assessments of the impact of climate on biodiversity and natural heritage undertaken over the course of this plan.
BD 6.4	Include climate resilience and future proofing in new biodiversity projects, plans and policies.	To minimise the impacts of climate change on the biodiversity projects, plans and policies of the county.	The development of a climate resilience and future proofing checklist for projects, plans and policies by 2027.
BD 6.5	Incorporate Galway County Council's Green Public Procurement Strategy to ensure the use of sustainable and environmentally-friendly materials in publications, events and materials.	To reduce carbon emissions and the environmental impact of Galway County Council's work.	The number of biodiversity publications, events and materials supporting the Green Public Procurement Strategy.
BD 6.6	Ensure events organised by Galway County Biodiversity Office are climate-friendly by using lower-carbon transport where feasible, incorporating the Climate Unit's sustainable events guidelines and checklist.	To reduce the climate impact of any programmes or events organised by the Biodiversity Office.	The number of events per annum that adhered to the Climate Unit's checklist.

Code	Action	Objective	Key Performance Indicator
Climate Action			
BD 6.7	Develop sustainable urban drainage systems (SuDS) demonstration sites. Support the investigation of Slow the Flow methodologies to gain experience with using wetlands and other natural features to treat and retain surface and ground water, thereby improving water quality and flood management.	To demonstrate the opportunities and benefits of using wetlands to treat surface and ground water effluent to improve water quality.	The number of demonstration sites developed over the course of this plan.
BD 6.8	Support the conservation and restoration of wetland habitats (including peatlands under coniferous forestry) and raise awareness of their importance, taking cognisance of their role in climate action.	To manage, protect and raise awareness of the wetlands of Galway County.	The number of wetland conservation projects supported over the course of this plan. Participate annually in World Wetlands Day.
BD 6.9	Integrate climate education and communication into biodiversity and natural heritage projects.	To raise awareness of the cross-cutting issues of climate change and biodiversity and natural heritage.	The number of biodiversity and natural heritage projects that include climate change education and communication per annum.

7 - spot ladybirds - Rosina Joyce



Cultural Heritage Actions

Number	Action	Objective	KPI
Community Engagement			
CH 1.1	Consult and work with communities using an inclusive and collaborative approach.	To support the invaluable role of communities as stewards of cultural heritage throughout the county.	The annual number of communities engaged with and supported.
CH 1.2	Facilitate existing and help establish new networking opportunities with all sectors of the community including groups, individuals, diaspora, schools, further and higher education, statutory and non-statutory agencies.	To develop sustainable partnerships and encourage unity and plurality of ideas, knowledge and skills to foster a robust heritage community.	The annual number of network activities undertaken, partnerships established and facilitated.
CH 1.3	Promote and facilitate active citizenship and citizen science in relation to cultural heritage.	To increase citizen involvement in cultural heritage activities and research.	The annual number of participatory activities and events and data sets enhanced and created.
CH 1.4	To take cognisance of Galway County Council's Scéim Teanga in communications, actions, projects, activities, resources and communications.	To promote and encourage the use of Gaeilge as a living language.	The annual number of projects, activities and resources incorporating Gaeilge.
CH 1.5	To encourage and support communities in applying for funding and build capacity within the cultural heritage sector.	To increase the capacity of the cultural heritage sector within Galway County.	The number of funding opportunities publicised and groups/individuals supported.
CH 1.6	Collect, record and share cultural heritage information and make it available in an open data format that adheres to national policy.	To increase public access to cultural heritage information, guidance and resources.	The annual number of projects undertaken and resources disseminated.
CH 1.7	Work with communities in developing models of good cultural heritage practice.	To enhance awareness of the importance of establishing and utilising good standards in cultural heritage practice.	The annual number of training sessions and guidance resources provided.

Number	Action	Objective	KPI
Community Engagement			
CH 1.8	Continue to develop the Irish Community Archive Network (iCAN) programme in partnership with the National Museum of Ireland, the Heritage Council, Galway County Council and community volunteers.	To develop and expand the iCAN programme in Galway County to enhance and facilitate inclusivity.	The annual number of participating groups, level of engagement in person and online.
CH 1.9	Highlight, promote and assist the work of community groups through www.galwaycommunityheritage.org , galway.ie , social media and public events.	To raise awareness of the work being undertaken by community heritage volunteers across the county and encourage others to become involved as well.	The number of community projects highlighted and celebrated on Galway County Council social media platforms.
CH 1.10	Highlight and promote the work of the County Heritage, Biodiversity, Architectural Conservation, Climate Action, Arts, Culture, Library and Archives services.	To raise awareness of the work being undertaken by Galway County Council.	The annual number of promotional activities online and in person.
CH 1.11	Incorporate cultural heritage into creative arts projects in Galway County and develop cultural heritage-themed creative arts events with the community.	To increase the appeal and accessibility of cultural heritage outreach events in the community.	The number of cultural heritage projects and outreach events per annum incorporating music, visual art, film, performance art including dance, poetry, photography, etc.



The Wishing Tree Public Consultation – Maria Hitchcox

Number	Action	Objective	KPI
Education and Training			
CH 2.1	Develop and deliver cultural heritage skill-sharing activities throughout the county.	To facilitate community-based learning and knowledge-sharing.	The number of skill-sharing activities delivered per annum.
CH 2.2	Develop courses, workshops and training in cultural heritage for communities.	To encourage participation and active involvement in cultural heritage activities.	The number of workshops and training events per annum.
CH 2.3	Utilise technological skills, tools and approaches to assist in cultural heritage learning.	To avail of 'new thinking', new developments and expertise through partnerships and collaborations.	The number of training events and resources made available over the course of this plan.
CH 2.4	Promote and teach good practice on researching, compiling and producing heritage publications, interpretation and online content.	To record and preserve cultural heritage to good practice standards.	The number of good practice activities and resources delivered over the course of this plan.
CH 2.5	Enhance awareness of, and access to apprenticeships, accredited courses, lifelong learning opportunities and investigate the development of further courses.	To afford the general public and community groups access to further learning and active involvement with their cultural heritage.	The number of opportunities promoted through Galway County Heritage Office.



Kilboght Medieval Church - Hany Marzouk

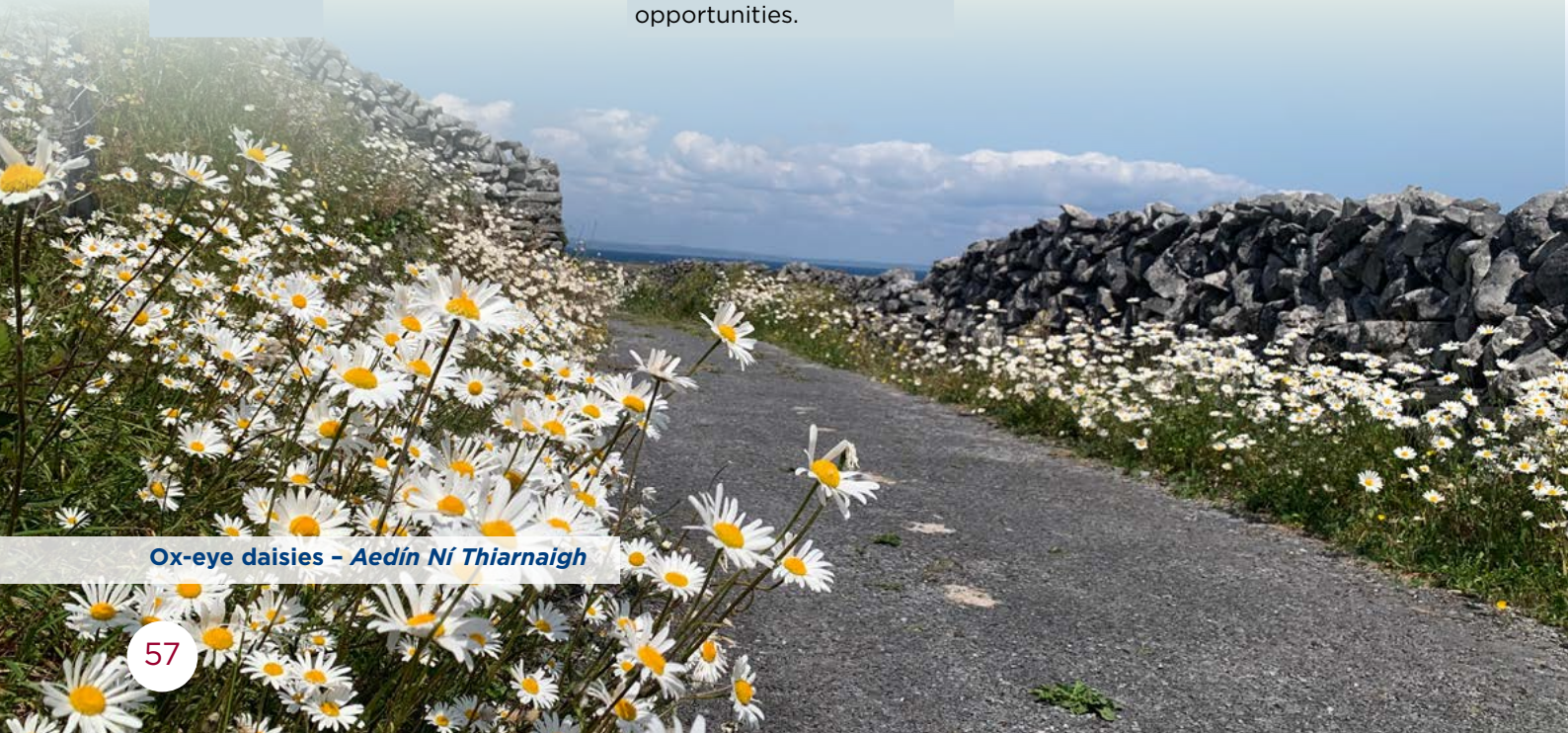
Code	Action	Objective	Key Performance Indicator
Research, Monitoring & Conservation			
CH 3.1	Identify gaps in knowledge around cultural heritage among decision makers and address accordingly.	To ensure informed decisions are made regarding cultural heritage.	The number of relevant publications, resources, presentations and events held per annum.
CH 3.2	Work with communities, schools, higher and further education and other agencies with regards to cultural heritage research.	To facilitate communication between educational institutions and cultural heritage stakeholders.	The number of collaborations per annum.
CH 3.3	Assist communities in exploring their cultural heritage in accordance with the principles of Equality, Diversity and Inclusion (EDI) and research integrity.	To ensure that everyone can avail of assistance, exchange research methods and results, and apply robust research good practice standards.	The number of communities assisted per annum.
CH 3.4	Develop templates of recommended good practice with regards to cultural heritage research and delivery of project outputs.	To assist researchers in designing projects to recommended standards, including presentation of outputs.	The number of templates made available over the course of this plan.
CH 3.5	Digitise and make available cultural heritage material.	To utilise established and emerging technologies, including open access formats, to disseminate cultural heritage material to local, national and international audiences.	The number of projects digitised and disseminated by the Heritage Office per annum.
CH 3.6	Undertake and support others to deliver oral heritage projects.	To increase knowledge and understanding of the oral heritage of the county.	The number of oral heritage projects undertaken and/or supported per annum.
CH 3.7	Continue to develop www.galwaydecadeofcommemoration.org	To continue to make available ongoing research into the people and events related to the Decade of Commemorations and ensure that this web initiative is appropriately resourced.	The annual total number of users and page views using data analytics.

Code	Action	Objective	Key Performance Indicator
Research, Monitoring & Conservation			
CH 3.8	Explore opportunities for conducting research into emerging themes in Heritage Futures – e.g. cultural heritage as a form of resilience in climate action, biodiversity restoration, domestic and agricultural practices and sustainability.	To help individuals, groups, communities and organisations to identify aspects of our heritage that can help create a more sustainable future.	A document identifying research opportunities in relation to Heritage Futures.
CH 3.9	Continue to audit privately held collections (digital and physical) and provide guidelines for their proper storage and recording.	To encourage the documentation and conservation of and access to privately-held collections.	The number of collections audited over the course of this plan.
CH 3.10	Develop a Public Donations Accession Policy, informed by policies of relevant stakeholders.	To ensure the proper care, conservation, storage and access to heritage items offered for donation to the Local Authority.	The development of a Public Donations Accession Policy.
CH 3.11	Develop guidance for community groups in respect to access, acceptance, care and preservation to donations of materials, documents and artefacts.	To ensure the proper care, conservation, storage and access to heritage items offered for donation to community/volunteer groups.	The development of a guidance document for community groups in relation to offers of heritage donations.



Athenry Walled Town Day – Hany Marzouk

Code	Action	Objective	Key Performance Indicator
Galway County Council: People, Property and Works			
CH 4.1	Facilitate the exploration, documentation and conservation of cultural heritage by Galway County Council staff.	To develop resources, guidelines, courses and technologies that will assist in the exploration, documentation and conservation of our cultural heritage.	The number of resources, guidelines, courses and technologies created over the course of this plan.
CH 4.2	Circulate heritage-related guidelines to Galway County Council staff.	To raise awareness of the importance of cultural heritage amongst Galway County Council staff.	The number of guidelines circulated to staff over the course of this plan.
CH 4.3	Work with the Archives Service to identify mutually beneficial opportunities for collaboration and to advocate for investment in enhanced service and facilities.	To safeguard and expand collections and support the Archives Service.	The number of items accessioned into the Galway County Council Archives via the Heritage Office.
CH 4.4	Continue to develop the heritage sections, projects and resources on Galway County Council digital platforms.	To maximise the potential of digital platforms and technologies to disseminate heritage information and materials.	The annual total number of users and page views.
CH 4.5	Seek to expand the human and financial resourcing of staff and the cultural heritage sector within the county.	To enhance the resources for cultural heritage in proportion to the large geographical area and demographic profile of the county and the public's high expectation for engagement and participatory opportunities.	The amount of enhanced resources attained by Galway County Council over the course of this plan.



Ox-eye daisies - Aedin Ní Thiarnaigh

Code	Action	Objective	Key Performance Indicator
Stakeholder Engagement and Collaborative Opportunities			
CH 5.1	Continue to convene meetings of, and actively engage with the Galway County Heritage and Biodiversity Forum.	To draw on the expertise of the Galway County Heritage and Biodiversity Forum in the development and delivery of heritage actions and objectives.	The number of meetings of the Forum per annum.
CH 5.2	Consult and collaborate with a range of stakeholders to develop more robust and effective action on cultural heritage, within and beyond the county.	To deliver a holistic and integrated work programme that addresses and takes cognisance of the polyvocal nature of the county's heritages.	Number of consultations and collaborations with stakeholders per annum.
CH 5.3	Develop strategic partnerships to seek funding, add value and resources to deliver cultural heritage projects.	To leverage and maximise funding, adding value and resources for the benefit of delivering culture heritage projects.	The number of strategic partnerships developed; the amount of funding obtained and projects delivered per annum.
CH 5.4	Conduct an audit of the needs of local museums, heritage centres and community-led heritage spaces in the county.	To identify challenges and opportunities for capacity-building for the local/volunteer museum sector.	An audit of needs and opportunities is completed over the course of this plan.
CH 5.5	Promote and participate in heritage events, such as <ul style="list-style-type: none"> · Anniversaries · Bealtaine Festival (Creativity in Older Age) · Cruinniú na nÓg, · Culture Night, · Irish Walled Towns Days · National Heritage Week, · National Famine Commemoration Day, · National Day of Commemoration, · other themed events and programmes. 	Showcase and promote the county's heritage and facilitate active engagement through new and established annual events programmes.	The number of events held and/or promoted per annum.

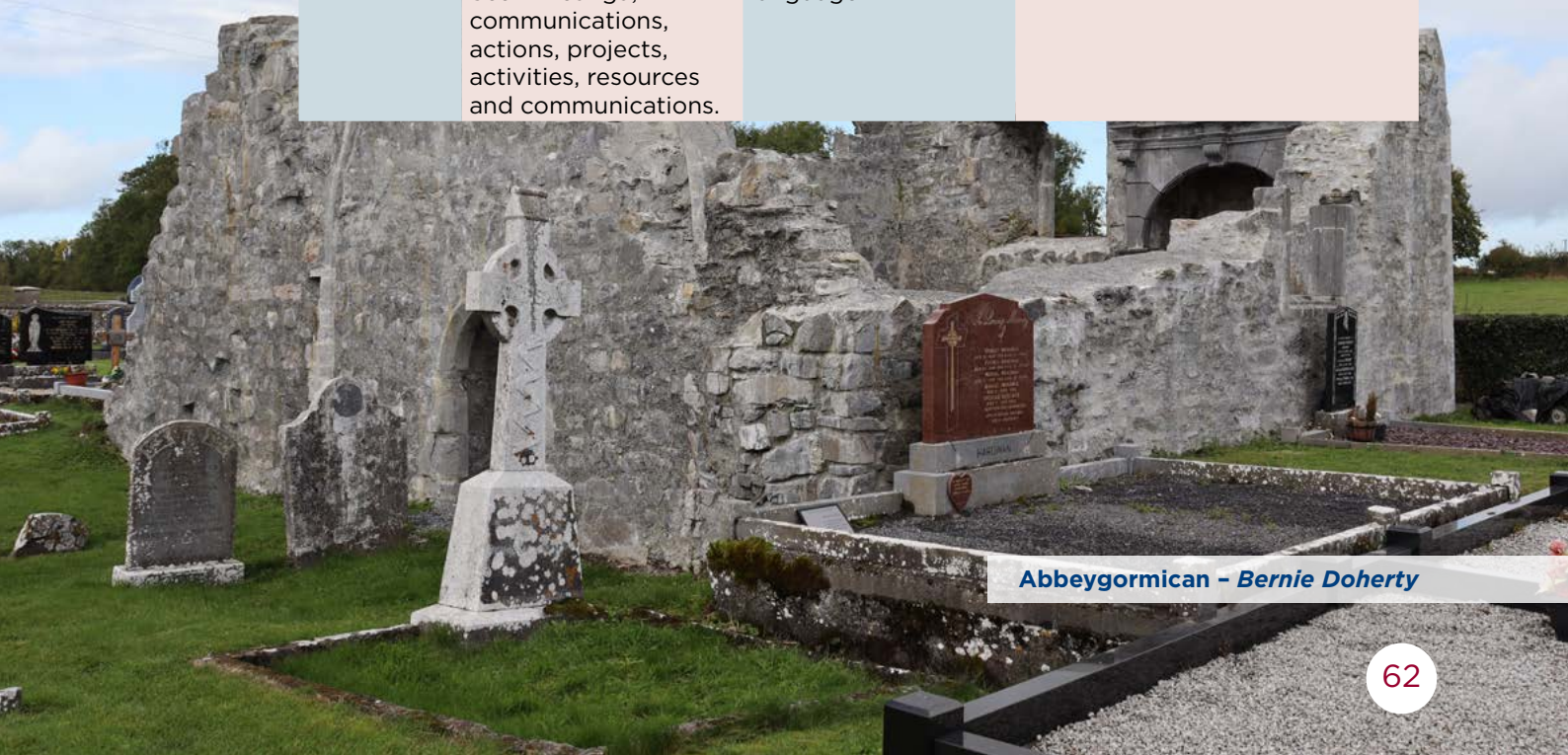
Code	Action	Objective	Key Performance Indicator
Climate Action			
CH 6.1	Undertake a Cultural Heritage and Climate Change Risk Assessment to develop appropriate adaptation and mitigation methodologies for heritage assets in Galway County Council's ownership.	To coordinate collaborative, evidence-based mechanisms to develop resilience, adapt or mitigate the impacts of climate change on the cultural heritage of the county.	Implementation of the Risk Assessment.
CH 6.2	Support and develop citizen science projects as a means of monitoring climate change impacts on Galway County's heritage assets.	To raise awareness and understanding of the resilience and vulnerability of Galway County's cultural heritage to climate change.	The number of citizen science projects undertaken that relate to climate change and cultural heritage over the course of this plan.
CH 6.3	Collaborate with other agencies in the assessment of the potential for climate change to impact on museums, archives (public and private), maritime heritage, archaeological objects, heritage objects, floating heritage, traditional crafts, etc.	To minimise the impacts of climate change on the cultural heritage assets of the county.	The number of collaborations and assessments of the impact of climate change on cultural heritage assets undertaken over the course of this plan.
CH 6.4	Include climate resilience and future proofing in new cultural heritage projects, plans and policies.	To minimise the impacts of climate change on and recognise the resilience of the cultural heritage of the county.	Monitoring climate resilience and the development of a future proofing checklist for projects, plans and policies by 2027.
CH 6.5	Ensure events are climate-friendly by incorporating the Climate Unit's sustainable events guidelines and checklist.	To reduce the climate impact of any programmes or events.	The number of events held that adhered to the Climate Unit's checklist.
CH6.6	Integrate climate change education and communication into cultural heritage projects, emphasising the value of traditional knowledge, skills and practices.	To raise awareness of the cross-cutting issues of climate change and cultural heritage.	The number of heritage projects that include climate change education and communication, per annum.
CH 6.7	Support projects that build on existing local knowledge and other relevant sources with regards to climate resilience.	To create opportunities to increase climate mitigation options and efficacy, and to highlight the value of traditional knowledge, skills and practices in developing climate resilience.	The number of exemplars of good practice with regards to climate resilience developed over the course of this plan.

Built and Archaeological Heritage

Code	Action	Objective	Key Performance Indicator
Community Engagement			
BAH 1.1	Assist communities through the provision of advice, both on-line and in-person, to achieve their heritage projects and objectives to the standards of best heritage practice. Encourage cooperation with other communities, groups and jurisdictions, and support compliance with legislation.	To facilitate positive outcomes so that communities adopt best heritage practice, exchange knowledge, experience and cooperate with relevant heritage agencies and organisations.	The number of projects, communities and individuals supported.
BAH 1.2	Highlight and celebrate the work of the communities in built and archaeological heritage.	To raise awareness of the work of communities.	The number of projects highlighted through social media channels, iCAN and public events.
BAH 1.3	Consult and work with communities using an inclusive and collaborative approach.	To support the invaluable role of communities as stewards of built heritage throughout the county.	The annual number of communities engaged with and supported, online and/or in person.
BAH 1.4	Develop and deliver training programmes and projects in partnership with communities and other bodies, that showcase built and archaeological heritage best practice.	To showcase and promote archaeological and built heritage best practice.	The number of programmes delivered in partnership with communities and other bodies.

Code	Action	Objective	Key Performance Indicator
Community Engagement			
BAH 1.5	Organise networking events for communities, heritage professionals and stakeholders to engage and learn from each other through exhibitions, familiarisation tours, conferences, etc.	To facilitate connections between communities, heritage professionals and other stakeholders, to ensure that diverse groups have opportunities to partake in programmes, events and projects pertaining to built and archaeological heritage.	The numbers of programmes, events and projects organised.
BAH 1.6	Publicise funding opportunities and application deadlines for built and archaeological heritage projects.	To encourage and support communities in applying for funding and build capacity within our built and archaeological heritage sector.	The number of funding opportunities publicised and groups/individuals supported.
BAH 1.7	Create an awareness of existing and potential heritage citizen science projects, develop relevant survey methodology, technology and training where needed.	To promote, encourage and facilitate public participation in citizen science projects within the community, to create a better connection with and understanding of its built and archaeological heritage.	The number of citizen science events and projects promoted.
BAH 1.8	Continue to develop the heritage office projects and resources on Galway County Council digital platforms.	To maximise potential of digital platforms and technologies to disseminate heritage information and materials.	The annual total number of page views and users.
BAH 1.9	Support and/or deliver multi-disciplinary events.	To consult and work with a broad spectrum of community groups to give them a voice, to encourage and facilitate their active participation and collaboration with others.	The annual number of multi-disciplinary events.

Code	Action	Objective	Key Performance Indicator
Community Engagement			
BAH 1.10	Create awareness of European, national and regional initiatives, assist in promotion and encourage participation.	To support and promote participation in European, national and regional initiatives.	The annual number of European, national and regional initiatives supported by the Heritage Office.
BAH 1.11	Incorporate built and archaeological heritage into creative arts projects in Galway County and develop built and archaeological themed creative arts events with the community.	To increase the appeal and accessibility of built and archaeological heritage outreach events in the community.	The number of projects and outreach events incorporating music, visual art, film, performance art including dance, poetry, photography, etc.
BAH 1.12	Highlight and promote the work of the county Heritage, Biodiversity, Architectural Conservation, Climate Action, Arts, Culture, Library, and Archives services.	To raise awareness of the work being undertaken by Galway County Council.	The annual number of promotional activities online and in person.
BAH 1.13	Provide information to community groups through the Galway County Public Participation Network (PPN).	To raise awareness and knowledge of built and archaeological heritage among community groups and organisations.	The number contributions to PPN communications.
BAH 1.14	Take cognisance of Galway County Council's Scéim Teanga, in communications, actions, projects, activities, resources and communications.	To promote and encourage the use of Gaeilge as a living language.	The annual number of projects, activities and resources incorporating Gaeilge.



Abbeygormican – Bernie Doherty

Code	Action	Objective	Key Performance Indicator
Education & Training			
BAH 2.1	Provide and promote local, regional and national networking events and workshops.	To facilitate interactive, community-based learning and knowledge-sharing between heritage and other community-action groups at local, regional and national level. To ensure understanding, collaboration and cooperation between community groups.	The number of events held per annum that facilitate more than one group or organisation.
BAH 2.2	Provide training in best practice, national legislation and regional initiatives and policies in relation to built and archaeological heritage and conservation through advisory engagement, site visits and workshops.	To ensure participants develop an understanding and insight into best practice and apply these when undertaking built and archaeological heritage projects so that they can become exemplars.	The number of training programmes provided.
BAH 2.3	Identify gaps in built heritage specialisms and resources and provide support through resources and training to address these gaps.	To identify and address gaps in built heritage expertise through resources and training.	Completion of training needs-gap analysis. Provide a list of competent, qualified specialists.
BAH 2.4	Continue to facilitate the development and delivery of programmes to pass on traditional building and craft skills.	To ensure that traditional skills do not die out and that those who wish to learn them can avail of tuition from competent specialists.	A list of competent specialists. The annual number of training events facilitated by the Heritage & Architectural Conservation Office.
BAH 2.5	Promote and support the Heritage in Schools programme or other educational initiatives.	To support specialist training in our built and archaeological heritage to students and educators.	The number of Galway County schools engaging with the Heritage in Schools programme and heritage experts per annum.

Code	Action	Objective	Key Performance Indicator
Research, Monitoring & Conservation			
BAH 3.1	Strengthen and sustain the knowledge base for decision makers in relation to the protection, conservation and enhancement of built and archaeological heritage.	To ensure up to date information for decision makers is available and relevant, including 'new thinking', new technologies, new findings, new policies and new legislation.	The number of relevant updates publicised and events held per annum.
BAH 3.2	Identify gaps in knowledge relating to built and archaeological heritage among decision makers and address accordingly.	To ensure informed decisions are made regarding our built and archaeological heritage.	Completion of gap analysis. The number of targeted communications to decision makers addressing these gaps.
BAH 3.3	Procure and make accessible information on heritage legislation, protected sites, Recorded Monuments and Protected Structures, etc.	To ensure that information regarding our built and archaeological heritage legislation is made accessible.	The number of relevant updates on digital media channels for Galway County Council per annum.
BAH 3.4	Develop and maintain links with researchers, educational institutions, museums, libraries and archives.	To increase accessibility to built and archaeological heritage information for all and to widen the scope for research and education.	The number of institutions engaged with per annum.
BAH 3.5	Encourage information sharing between third level institutions and built and archaeological heritage stakeholders.	To facilitate communication between educational institutions and the built and archaeological heritage stakeholders.	The number of collaborations per annum.
BAH 3.6	Digitise and make available built and archaeological heritage material to a wide and diverse audience.	To utilise established and emerging datasets and technologies to disseminate built and archaeological heritage material in open access formats to local, national and international audiences.	Annual number of users, page views and downloads using data analytics.
BAH 3.7	Undertake and support others to deliver built and archaeological heritage projects.	To increase our knowledge and understanding of our built and archaeological heritage.	The number of projects undertaken and supported per annum.

Code	Action	Objective	Key Performance Indicator
Research, Monitoring & Conservation			
BAH 3.8	Develop guidance for community groups in respect to access, acceptance, care and preservation of donations of materials, documents and artefacts.	To ensure proper care, conservation, storage and access to heritage items offered for donation to community/volunteer groups.	Production of a guidance document for community groups in relation to offers of heritage materials, donations or artefacts.
BAH 3.9	Raise awareness of the heritage and ecological benefits of stone walls and structures.	To safeguard the ecological and heritage importance of stone walls and structures.	The number of social media posts, workshops, guided walks and educational materials that raise awareness of the heritage and ecological importance of stone walls and structures per annum.
BAH 3.10	Explore opportunities for conducting research into emerging themes in Heritage Futures – e.g. cultural heritage as a form of resilience in climate action, biodiversity restoration, domestic and agricultural practices, and sustainability.	To help individuals, groups, communities and organisations to identify aspects of our heritage that can help create a more sustainable future. To document identified research opportunities in relation to Heritage Futures.	The number of contributions and collaborations regarding Heritage Futures.

Abbeygormican church - *Bernie Doherty*



Code	Action	Objective	Key Performance Indicator
Galway County Council: People, Property and Works			
BAH 4.1	Continue to promote best practice within Galway County Council in relation to conservation and safeguarding of built and archaeological heritage while also integrating biodiversity, natural heritage and cultural heritage considerations.	To ensure that all directorates within Galway County Council adopt best practices.	The number of training events promoting best practice principles and regulations.
BAH 4.2	Provide targeted traditional skills training for relevant staff.	To equip relevant Galway County Council staff with the knowledge of, and skills in, traditional conservation work.	The number of training events for Galway County Council staff.
BAH 4.3	Continue to implement and develop the Community Archaeology Project.	To ensure that Community Archaeology Project is adequately resourced in providing advice and guidance to communities, schools, individuals and Local Authority with respect to its archaeological heritage.	Community Archaeologist post is secured. Production of Galway County Community Archaeology Project Annual Report.
BAH 4.4	Continue to undertake audits, surveys and plans of the built and archaeological heritage of the county.	To gain a greater understanding and knowledge of the built and archaeological heritage assets in Galway County.	The number of audits, surveys and plans of the built and archaeological heritage undertaken.
BAH 4.5	Continue to raise awareness on enforcement measures, existing and incoming heritage legislation and provide related training.	To ensure that all Galway County Council staff are made aware of new or impending heritage legislation so that it can be incorporated in all policies, plans, works and projects.	The number of updates of heritage legislation. The annual number of training sessions for Galway County Council staff.
BAH 4.6	Encourage appropriate re-use of historical buildings and their settings.	To make appropriate use of historical buildings and their settings, ensuring their integrity is not compromised and their restoration and maintenance comply with relevant best practice guidelines and current legislation.	The annual number of historical buildings re-used with guidance and/or training from Galway County Council.

Code	Action	Objective	Key Performance Indicator
Galway County Council: People, Property and Works			
BAH 4.7	To raise awareness of and encourage sensitive public-realm development that gives appropriate consideration to built and archaeological heritage and to urban morphology (development of street patterns, existence or former existence of town walls, nature of historic building plots, architectural conservation areas, etc.).	To maintain and enhance existing historic street layouts, landscapes, townscapes, townland boundaries, etc.	The annual number of public realm projects requiring Heritage Office/ Architectural Conservation Office collaboration.
BAH 4.8	Support the provision of suitable interpretative methods and materials for built and archaeological heritage sites with best practice advice.	To provide tailor-made site-specific interpretation where appropriate.	The number of heritage sites that benefit from support on interpretation from the Heritage and Architectural Conservation Offices.
BAH 4.9	Seek to expand the human and financial resources within the Heritage and Architectural Conservation Offices.	To seek enhanced resources for the Heritage and Architectural Conservation Offices in proportion to the large geographical area and demographic profile of the county and the public's high expectation for engagement and participatory opportunities.	The amount of enhanced resources attained over the course of this plan.



Cruinniú @ Portumna view of barges - Marie Mannion

Code	Action	Objective	Key Performance Indicator
Stakeholder Engagement and Collaborative Opportunities			
BAH 5.1	Promote dialogue between stakeholders and relevant government departments and agencies regarding overlapping policies, legislation and practices to facilitate effective action on built and archaeological heritage.	To share knowledge and promote collaboration between relevant organisations.	The number of networking opportunities facilitated per annum.
BAH 5.2	Work in partnership with national, regional and local agencies, Galway County PPN, NGOs, various relevant professional bodies, academic institutions, local communities, public libraries and others on the promotion and development of projects and the implementation of heritage best practice.	To ensure that built and archaeological heritage is recognised and considered and heritage best practice is implemented when local authority plans, projects and strategies are being developed.	The annual number of local authority plans, projects and strategies that have input from the Heritage and Architectural Conservation Offices.
BAH 5.3	Identify funding opportunities and work with all stakeholders on developing projects and initiatives relating to the built and archaeological heritage.	To avail of funding streams, initiatives and schemes relating to the protection, conservation and enhancement of the built and archaeological heritage of the County.	The number of initiatives/schemes/funding opportunities applied for/availed of per annum.
BAH 5.4	Liaise with tourism sector, inc. Fáilte Ireland, and highlight best practice relating to built and archaeological heritage.	To ensure accurate interpretation and respectful signage at heritage sites. To adhere to heritage best practices for any works, considering the site's character and visual amenity and to maintain sustainable tourism levels at built and archaeological heritage sites.	The number tourism-related projects and initiatives that received heritage input per annum.
BAH 5.5	Seek to protect the built heritage and archaeological resource affected by climate change	To reduce risk and vulnerability to climate change. Strengthen resilience, enhance capacity and anticipate response to change.	The number of initiatives undertaken addressing climate change per annum.

Code	Action	Objective	Key Performance Indicator
Climate Action			
BAH 6.1	Undertake a Built and Archaeological Heritage and Climate Change Risk Assessment to develop appropriate adaptation and mitigation methodologies for heritage assets in the Council's ownership.	To coordinate collaborative, evidence-based mechanisms to develop resilience, adapt or mitigate the impacts of climate change on the archaeological and built heritage of the county.	Risk assessment undertaken
BAH 6.2	Support and develop citizen science projects as a means of monitoring climate change impacts on Galway County's heritage assets.	To raise awareness and understanding of the resilience and vulnerability of Galway County's built and archaeological heritage to climate change.	The number of citizen science projects undertaken that relate to climate change and built and archaeological heritage over the course of this plan.
BAH 6.3	Co-operate with other agencies in the assessment of the potential for climate change to impact on monuments, architectural heritage, heritage gardens and parks, wrecks, industrial heritage, landscapes, archaeological structures, inland waterways, etc.	To minimise the impacts of climate change on the built and archaeological heritage assets of the county.	The number of collaborations and assessments of the impact of climate change on built and archaeological heritage assets undertaken over the course of this plan.
BAH 6.4	Include climate resilience and future proofing in new built heritage and archaeological projects, plans and policies.	To minimise the impacts of climate change on and recognise the resilience of the built and archaeological heritage of the county.	Monitoring climate resilience and the development of a future proofing checklist for projects, plans and policies by 2027.
BAH 6.5	Ensure events are climate-friendly by incorporating the Climate Unit's sustainable events guidelines and checklist.	To reduce the climate impact of any programmes or events.	The number of events per annum that adhered to the Climate Unit's checklist.
BAH 6.6	Integrate climate change education and communication into heritage projects, emphasising the value of existing assets that embody carbon and offer potential for adaptive reuse.	To highlight circular economy opportunities in the adaptive reuse of heritage buildings and structures to reduce climate change impacts.	The number of heritage projects that include climate change education and communication from the Architectural Conservation and Heritage Office over the course of this plan.
BAH 6.7	Support projects that build on existing local knowledge and other relevant sources with regards to climate resilience.	To create opportunities to increase climate mitigation options and efficacy.	Develop exemplars of best practice with regards to climate resilience.

Heritage Best Practice

The principles of the UN Sustainable Development Goals and the inclusivity will be applied to all actions arising from the *Galway County Heritage and Biodiversity Plan 2024-2030*. The plan will be undertaken in accordance with evolving good practice and in compliance with all relevant legislation and required environmental assessments. No actions will proceed that will have a negative impact on biodiversity, heritage sites, objects or any protected sites or areas.

The Forum will demonstrate leadership in the implementation of *Galway County Heritage and Biodiversity Plan 2024-2030*.

Conclusion

The *Galway County Heritage and Biodiversity Plan 2024-2030* is action based. Galway County Heritage and Biodiversity Forum will oversee the overall implementation of the plan. Partners may be included at the implementation stage of various actions if the need arises. Galway County Council is a lead partner while the Galway County Heritage Office, the Galway County Biodiversity Office, the Galway County Architectural Conservation Office and the Galway County Community Archaeologist in many cases will co-ordinate projects and may be assisted by members of the Forum as appropriate.

It is acknowledged that in some instances there is need for a more co-ordinated approach with regards to the management of Galway County's heritage and biodiversity. In areas where multiple agencies have a role in the management and regulation of these resources, the Heritage and Biodiversity Forum will actively seek to promote an integrated approach and encourage dialogue between stakeholders and relevant government departments and agencies.

Heritage and biodiversity are important elements in the social, cultural and economic life of Galway County and investment in them yields significant returns in furthering economic and social goals. They are significant drivers of the tourist industry and important stimulants of local activities, leading to enhanced local employment; they are measurable contributors to the sustainability of communities and they enhance the quality of human life and the environment of communities by facilitating participation and voluntary action based on local resources.

The *Galway County Heritage and Biodiversity Plan 2024-2030* emphasises local, voluntary actions on the principle of cooperation, 'ní neart go cur le chéile'.

Galway County Heritage and Biodiversity Forum urges the relevant national, regional and local authorities to recognise the acknowledged benefits of Heritage and Biodiversity by increasing financial support for them: 'tús maith leath na hoibre'.



Maumturk Mountains - *Shane Coyle*



Appendices

Appendix 1: Key Legislation and Policies

Policy Context

International

United Nations Sustainable Development Goals, 2015 Emirates Declaration on Cultural-based Climate Action, 2023

United Nations Decade on Ecosystem Restoration 2021 - 2030

EU

Communication from the European Commission on the New European Bauhaus, 2021

Council conclusions on culture, high-quality architecture and built environment as key elements of the New European Bauhaus initiative, 2021

New Leipzig Charter, 2020

EU Biodiversity Strategy 2030 – Bringing Nature Back Into Our Lives

New European Agenda for Culture, 2018

Work Plan for Culture 2019-2022

European Framework for Action on Cultural Heritage, 2019

National

Heritage Ireland 2030, 2022

Our Place in Time/Ár n-Áit sa Stair: Heritage Council Strategic Plan 2023-2028, 2023

Project Ireland 2040 (combining the National Planning Framework and the National Development Plan 2021-2030)

Town Centre First, 2022

Our Rural Future: Rural Development Policy 2021-2025, 2021

Places for People: The National Policy on Architecture, 2022

Climate Action Plan, 2023

4th National Biodiversity Plan 2023-2030

Circular Economy Strategy, 2021

Culture 2025 Éire Ildánach, 2020

Archaeology 2025, Strategic Pathways for Archaeology in Ireland 2017

Framework and Principles for the Protection of the Archaeological Heritage, 1999

National Landscape Strategy for Ireland 2015-2025, 2015

A Living Tradition, a strategy for our built vernacular heritage, 2021

Architectural Heritage Protection Guidelines, 2011

National Policy on Town Defences, 2008

Making Great Art Work: Arts Council Strategy 2016-2025, 2016

Archaeology in the Planning Process, OPR, 2021

Ireland's Biodiversity Sectoral Climate Change Adaptation Plan 2019

Regional

Regional Spatial and Economic Strategy 2020 - 2032 Northern and Western

Regional Assembly

Local

Galway County Development Plan 2022-2028

Galway County Council's Culture and Creativity Strategy 2023-2027

Galway County Council Corporate Plan 2020-2024

Galway County Local Economic and Community Plan 2024-2030

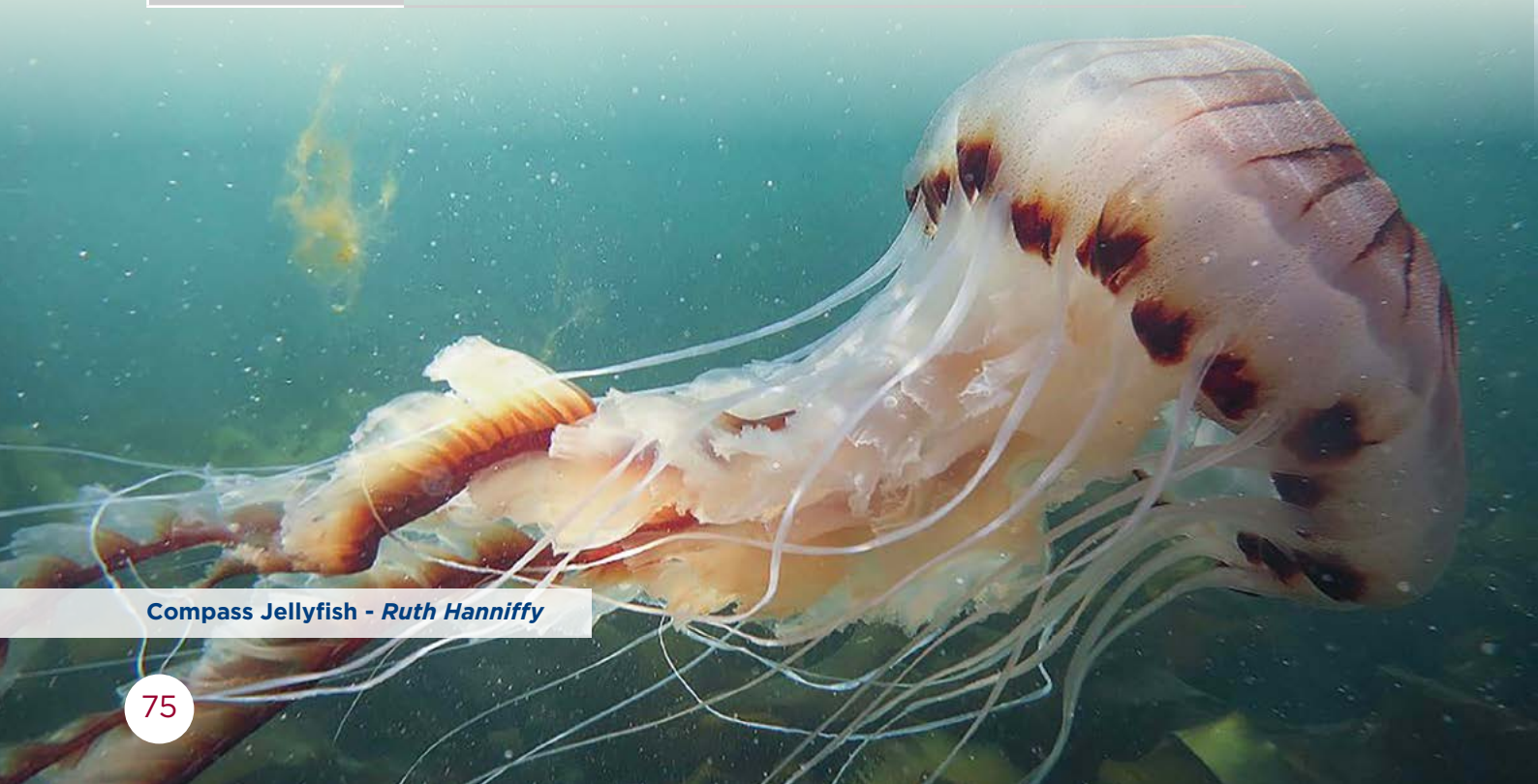
Galway County Council Local Authority Climate Action Plan 2024-2029

County Galway Tourism Strategy 2023-2031



Seal of Athenry - Alan Burgess

European Directives	
Planning and Built Heritage	<p>SEA Directive 2001/42/EC (Strategic Environmental Assessment)</p> <p>EIA Directive 1985/37/EEC (as amended) (Environmental Impact Assessment)</p> <p>Directive (EU) 2024/1275 of the European Parliament and of the Council of 24 April 2024 on the energy performance of buildings</p>
Archives and Record Management	<p>European Communities (Access to Information on the Environment) Regulations, 2007-2011</p> <p>INSPIRE Directive (2007/2/EC - Infrastructure for Spatial Information in the European Community)</p>
Biodiversity and Natural Heritage	<p>EU Nature Restoration Regulation (Regulation (EU) 2024/1991 of The European Parliament and of the Council of 24 June 2024)</p> <p>Birds Directive (Council Directive 79/409/EEC)</p> <p>Habitats Directive (Council Directive 92/43/EEC)</p> <p>Freshwater Fish Directive (Council Directive 78/659/EC)</p> <p>Water Framework Directive (Council Directive 2000/60/EC)</p> <p>Environmental Liability Directive (Council Directive 2004/35/EC)</p>
International Conventions	
Archaeology	<p>European Convention on the Protection of the Archaeological Heritage ('Valletta Convention'), 1997</p>



Compass Jellyfish - Ruth Hanniffy

International Conventions	
Architectural Heritage	<p>European Convention on the Protection of the Architectural Heritage of Europe ('Granada Convention'), 1985</p> <p>European Convention on the Value of Cultural Heritage for Society (Faro Convention, 2005)</p> <p>Burra Charter, ICOMOS Australia, revised 2013</p> <p>Nizhny Tagil Charter for the Industrial Heritage, 2003</p> <p>Joint ICOMOS-TICCIH Principles for the Conservation of Industrial Heritage Sites, Structures, Areas and Landscapes ('Dublin Principles'), 2011</p> <p>Charter for the Conservation of Historic Towns and Urban Areas ('Washington Charter'), 1987</p> <p>Charter for the Protection and Management of the Archaeological Heritage, 1990</p> <p>International Cultural Tourism Charter - Managing Tourism at Places of Heritage Significance, 1999</p>
Biodiversity & Natural Heritage	<p>UNESCO Convention Concerning the Protection of the World Cultural and Natural Heritage, 1972</p> <p>Convention on the Conservation of European Wildlife and Natural Habitats (Berne Convention), 1979</p> <p>Convention on the Conservation of Migratory Species of Wild Animals (Bonn Convention), 1979</p> <p>Agreement on Conservation of Bats in Europe (Bonn Convention), 1993</p> <p>Convention on Wetlands of International Importance (Ramsar Convention), 1971</p> <p>Convention on Biological Diversity, 1992</p> <p>Convention on International Trade in Endangered Species (CITES), 1974</p> <p>Agreement on the Conservation of African-Eurasian Migratory Waterbirds (AEWA) (Bonn Convention), 1996</p> <p>International Tropical Timber Agreement 1994, 1996</p> <p>Pan-European Biological and Landscape Diversity Strategy, 1996</p>

International Conventions	
Culture and Biodiversity & Natural Heritage	<p>UNESCO Convention Concerning the Protection of the World Cultural and Natural Heritage, 1972</p> <p>Framework Convention on the Value of Cultural Heritage for Society ('Faro Convention'), 2005</p> <p>UNECE Convention on Access to Information, Public Participation in Decision-making and Access to Justice in Environmental Matters (Aarhus, 1998)</p> <p>UNESCO Convention for the Safeguarding of the Intangible Cultural Heritage, 2003</p> <p>ICOMOS Charter for the Interpretation and Preparation of Cultural Heritage Sites, 2008</p> <p>The General Data Protection Regulation (GDPR) (Regulation (EU) 2016/697)</p>
Landscape	European Landscape Convention, 2000
National Legislation	
Planning and Built Heritage	<p>Architectural Heritage (National Inventory) and Historic Monuments (Miscellaneous Provisions) Act, 1999</p> <p>Planning and Development Act 2024</p> <p>Planning and Development Regulations, 2001 (as amended)</p> <p>Heritage Act, 2018</p> <p>Historic and Archaeological Heritage and Miscellaneous Provisions Act 2023</p>
Archaeology and Archaeological Objects	<p>Historic and Archaeological Heritage and Miscellaneous Provisions Act 2023</p> <p>National Monuments Acts, 1930-2014 (as amended)</p> <p>National Cultural Institutions Act, 1997</p> <p>Heritage Act, 2018</p>
Heritage Objects, Museums, Archives and Records Management	<p>National Cultural Institutions Act, 1997</p> <p>Local Government Act, 2001, S.80</p> <p>National Archives Act, 1986</p> <p>Data Protection Act, 1988</p> <p>Freedom of Information Act, 1997</p> <p>The General Data Protection Regulation (GDPR) Regulation (EU) 2016/697</p>

National Legislation	
Irish Language	Acht na Gaeltachta, 2012 Acht na dTeangacha Oifigiúla, 2003 Acht Oideachais, 1998 Straitéis Fiche Bliain don Ghaeilge, 2010-2030 Polasaí don Oideachas Gaeltachta, 2017 - 2022 An tÓrdú Lagainmneacha (Ceantair Ghaeltachta), 2004 The Official Languages (Amendment) Act 2021
Biodiversity and Natural Heritage	Wildlife Acts 1976 to 2023 Sea-Fisheries and Maritime Jurisdiction Act, 2006 Foreshore Acts, 1933-2012 Fisheries (Amendment) Act, 1999 Flora (Protection) Order, 2015 European Communities (Birds and Natural Habitats) Regulations 2011 and 2021 EU (Invasive Alien Species) Regulations 2024 Forest Act, 2014 Forestry Regulations, 2017 (SI No 191 of 2017)
Landscape	Planning and Development Act 2024 Planning and Development Regulations, 2001 (as amended)



Pine Marten - Shane Coyle

Best Practice Guidelines	
<p>Planning and Built Heritage</p>	<p>Metal Detection: https://www.garda.ie/en/crime-prevention/advice-to-the-public-on-use-of-metal-detection-devices-.pdf</p> <p>Caves: https://www.archaeology.ie/sites/default/files/media/publications/NMS%20Caves%20Leaflet%20lo-res.pdf</p> <p>Protect our Past: https://www.archaeology.ie/sites/default/files/media/publications/NM%20Leflet%20IB%20Final%20English.pdf</p> <p>Check Before you Dig: www.gov.ie/checkbeforeyoudig</p> <p>Farming Practice & Archaeology: https://www.archaeology.ie/sites/default/files/media/publications/good-farming-practice-and-archaeology.pdf</p> <p>Architectural Heritage Protection: Guidelines for Planning Authorities: https://www.opr.ie/wp-content/uploads/2019/08/2011-Architectural-Heritage-Protection-1.pdf</p>
<p>Archaeology and Archaeological Objects</p>	<p>https://www.opr.ie/wp-content/uploads/2022/10/Planning-Leaflet-13-Archaeology-in-the-Planning-Process.pdf</p> <p>Explanatory Note & Glossary of Terms to Accompany Sample Archaeology Conditions https://www.opr.ie/wp-content/uploads/2022/10/NMS-Explanatory-Note-and-Glossary.pdf</p>
<p>Heritage Objects, Museums, Archives and Records Management</p>	<p>Museum Standards Programme for Ireland Standards and Guidelines https://www.heritagecouncil.ie/content/files/MSPI_Guidelines.pdf</p> <p>Standards for the care and treatment of archaeological object from excavations, National Museum of Ireland. https://www.museum.ie/getmedia/222c77e9-35dc-4345-b260-f67e835a5348/IAD_StandardsforExcavationObjects_1.pdf</p>
<p>Irish Language</p>	<p>Scéim Teanga Chomhairle Chontae na Gaillimhe 2019-2022 https://www.coimisineir.ie/userfiles/files/AnTriuSceim-Bearla_FINAL_Minor%20corrections_Dept%2008_08_19.pdf</p>

Best Practice Guidelines

Biodiversity and Natural Heritage

Environmentally Friendly Lighting Guide - Dark Sky Ireland

<https://biodiversity.galwaycommunityheritage.org/content/new-contributions/biodiversity-friendly-lighting-guidelines>

Tree Planting Guidelines for Communities

<https://biodiversity.galwaycommunityheritage.org/content/places/galwaynature/woodlands-hedgerows-and-trees>

Saving Swifts

https://birdwatchireland.ie/app/uploads/2019/10/Saving-Swifts-Guide_pdf.pdf

Barn Owl Nest Boxes

https://birdwatchireland.ie/app/uploads/2022/08/Barn-Owl-Nest-Box-Action_Guidance-Document_BirdWatch-Ireland.pdf

Wildlife in Buildings

<https://birdwatchireland.ie/wildlife-in-buildings/>

A Guide to Habitats in Ireland

https://biodiversityireland.ie/app/uploads/2021/04/Guide_to_Habitats1.pdf

Best Practice Guidance for Habitat Survey and Mapping

https://biodiversityireland.ie/app/uploads/2021/04/Habitat_Survey_Guidance_Heritage_Council_2011_2.pdf

Hedgerow Appraisal System: Best Practice Guidance on Hedgerow Surveying , Data Collection and Appraisal

https://biodiversityireland.ie/app/uploads/2021/04/Hedgerow_Appraisal_System.pdf

Guidelines for Local Biodiversity Action Plans

<https://www.heritagecouncil.ie/content/files/Local-Authority-Biodiversity-Action-Plan-Guidelines.pdf>

Good Practice Guidance for Habitats and Species (CIEEM)

<https://cieem.net/wp-content/uploads/2021/05/Good-Practice-Guide-2023-edit.pdf>

How to create a wildlife pond

<https://actionforbiodiversity.ie/app/uploads/2023/09/How-to-create-a-wildlife-pond.pdf>

The Irish Pond Manual: A Guide to the Creation and Management of Ponds

<https://www.antisce.org/Handlers/Download.ashx?IDM-F=01f01b3a-a3fd-4a51-822b-8fa991ad75fd>

All-Ireland Pollinator Plan

<https://pollinators.ie/>

Farming for Nature

<https://www.farmingfornature.ie/>



Large Red Damselfly - *Rosina Joyce*

Best Practice Guidelines

Landscape

EPA Toolkit for Undertaking Landscape Character Assessments

https://www.epa.ie/publications/research/land-use-soils-and-transport/LCA-Toolkit_461.pdf

Reading Your Local Landscape: Heritage Audit Toolkit

<https://heritage.galwaycommunityheritage.org/content/heritage-publications/reading-your-landscape>

This is not an exhaustive list but is in an introduction to various guidance and legislation relating to heritage and biodiversity in circulation at the time of print.

Appendix 2: Plan Development Process

The following table outlines the key milestones in the preparation of *County Galway Heritage and Biodiversity Plan 2024-2030*.

Tuesday 3 May 2022	Meeting of Galway County Heritage and Biodiversity Forum. Development of a new <i>Heritage & Biodiversity Plan 2023- 2030</i>
Tuesday 18 July 2023	Meeting of Galway County Heritage and Biodiversity Forum. Review and development of <i>Galway County Heritage and Biodiversity Plan 2024-2030</i>
Thursday 24 July 2023 - Monday 25 August 2023	Online consultation as part of the Climate Action, Heritage and Biodiversity Pre-Draft public consultation.
Monday 11 March 2024	Meeting of Galway County Heritage and Biodiversity Forum and commencement of Heritage and Biodiversity Plan Review
Monday 15 April 2024 - Monday 20 April 2024	<p>In person consultations took place in</p> <ul style="list-style-type: none"> • Oranmore, • Milltown, • Killererin (iCAN meeting), • Abbey, • Ballygar, • Ougherard • Leitir Mealláin which involved workshop style roundtable discussions.
Tuesday 16 April 2024 - Thursday 25 April 2024	<p>Art Workshop Consultations -</p> <p>children and adults from 6 target groups, drawn from various municipal areas of County Galway.</p> <ul style="list-style-type: none"> • The Travelling Community - Tuam (Adults) • Senior Citizens - Active Retirement Mountbellew (Adults) • People Living with Disabilities - Brothers of Charity Kilcornan, Clarinbridge (Adults) • New Communities - Carna (Adults) • Primary School - Inishbofin Primary School (Children) • Secondary School - TY students Seamount College Kinvara (Children)

Galway County Heritage and Biodiversity Plan 2024-2030

Tuesday 16 July 2024	Meeting of Galway County Heritage and Biodiversity Forum. Overview of the findings from the online consultation process, in person consultations and Art workshop consultations.
Tuesday 23 July 2024	Meeting of Galway County Heritage and Biodiversity Forum to update the members on the workings of the three working groups.
Friday 30 August 2024	Meeting of Galway County Heritage and Biodiversity Forum. Overview with regards to finalising <i>Galway County Heritage and Biodiversity Plan 2024 - 2030</i> .
Tuesday 24 September 2024	Meeting of Galway County Heritage and Biodiversity Forum - Updated Actions, Objectives and KPIs.
Friday 30 September 2024	Meeting of Galway County Heritage and Biodiversity Forum - Updated Actions, Objectives and KPIs.
Friday 25 October 2024	Meeting of Galway County Heritage and Biodiversity Forum and signed off on the draft document and agreed the finalisation process.
Monday 11 November 2024	Draft document presented to Galway County Council's Senior Management Team by Director of Services - Economic Development & Planning.
Wednesday 27 November 2024	Presentation of the draft <i>Galway County Heritage and Biodiversity Plan 2024-2030</i> to the Climate Action, Biodiversity & Heritage Strategic Policy Committee (SPC) of Galway County Council.
Monday 16 December 2024	Presentation of the draft <i>Galway County Heritage and Biodiversity Plan 2024-2030</i> to the elected members of Galway County Council at the December meeting of the Council. Plan adopted by Galway County Council.

Appendix 3: Galway Heritage and Biodiversity Forum

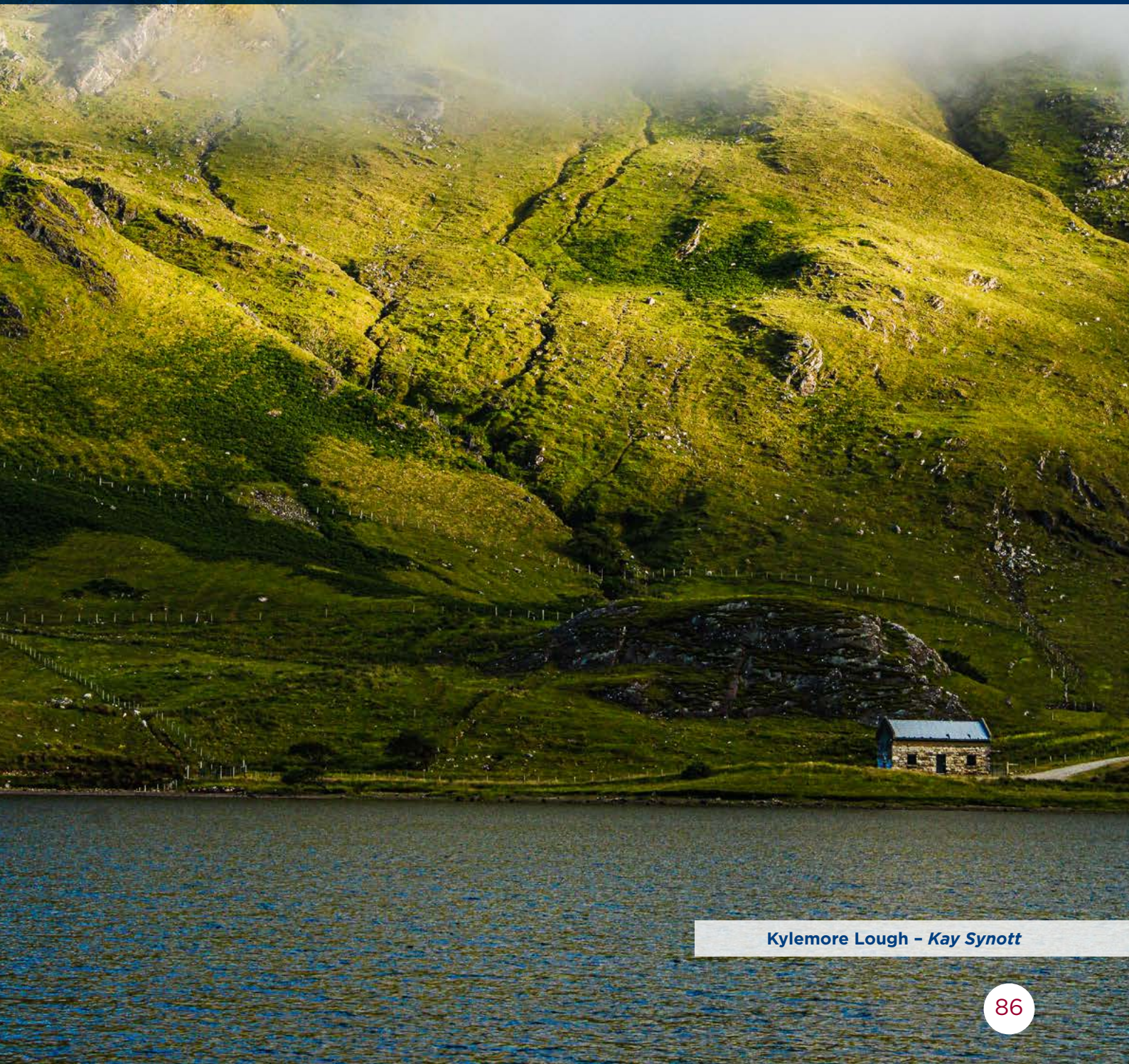
Members of Galway County Heritage & Biodiversity Forum 2024 - 2030	
James Allison	Sea Fisheries Protection Agency (until February 2025)
Áine Bird	BurrenBeo (Main Rep)
Laura Connolly	National Parks & Wildlife Service (Main Rep)
Christy Cunniffe	Archaeologist and Heritage Expert
Ann Marie Cusack	Architectural Conservation Officer, Galway County Council
Padraic Divilly	Irish Farmers Association
Bernie Doherty	Galway Community Archaeologist, Galway County Council
Jacqui Donnelly	Dept. of Housing, Local Government and Heritage
Luke Drey	Local Authority Waters Programme (Main Rep)
Lorna Elms	National Museum of Ireland
Martin Gammell	Atlantic Technical University, Galway
Roisin Gannon	Forum Connemara
Michael Gormally	University of Galway
Mark Green	An Taisce
Jonathan Hannon	Galway Archaeological and Historical Society
David Harrington	Inland Fisheries Ireland (Deputy Rep)
Éanna Hyland	Local Authority Waters Programme (Deputy Rep from December 2024)
Rosina Joyce	Biodiversity Officer, Galway County Council
Frank Keane	Galway Rural Development
Donal Keegan	Dept of Agriculture, Food & Marine
Hazel King	Inland Fisheries Ireland (Main Rep)
Gráinne Lynch	Sea Fisheries Protection Agency (from February 2025)
Karen Mannion	Forum Connemara
Marie Mannion	Heritage Officer, Galway County Council
Rebecca Mooney	Galway County Council, Climate Unit
Kate McAney	Vincent Wildlife Trust
Mark McCarthy	Atlantic Technical University
Martina McCarthy	Waterways Ireland

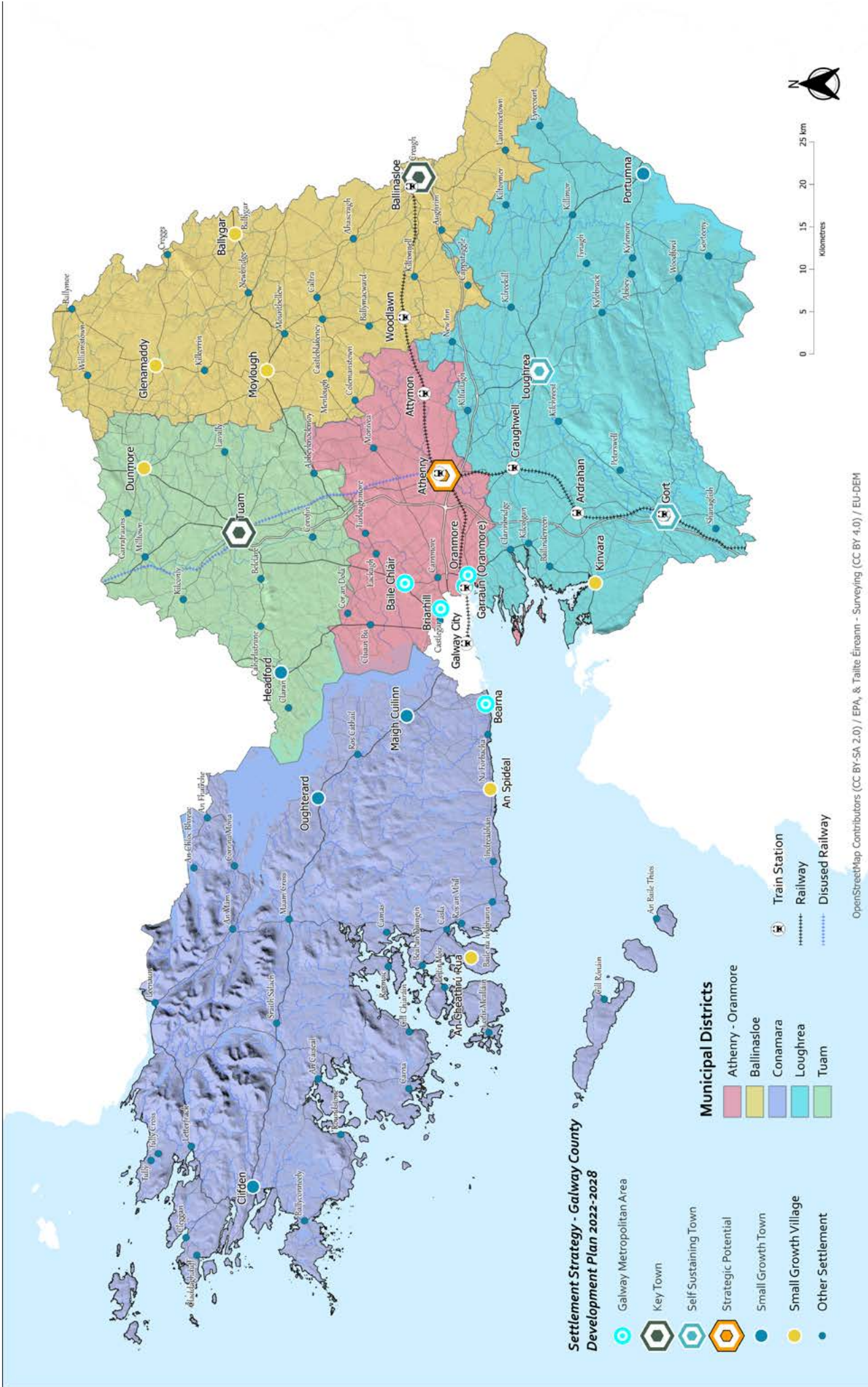
Members of Galway County Heritage & Biodiversity Forum 2024 - 2030	
Barry McNally	Galway Roscommon Education Training Board
Aisling Ní Dochartaigh	Údaras na Gaeltachta
John Olney	National Monuments Service
Jerry O’Sullivan	Transport Infrastructure Ireland
David Rafter	Local Authority Waters Programme (Deputy Rep until December 2024)
Brendan Smith	INSIGHT, University of Galway
Raymond Stevens	National Parks & Wildlife Service (Deputy Rep)
Rebecca Teesdale	National Parks & Wildlife Service (Deputy Rep)
Marianne ten Cate	BirdWatch Ireland
Karen VanDorp	BurrenBeo (Deputy Rep)
Eithne Verling	Galway City Museum

Heritage and Biodiversity Advisors:	
Maria Hitchcox	Artist/External Expert
Sheila Murphy	Ecologist/External Expert
Eimear O’Connell	Heritage/External Expert
Zena Hocter	Heritage/External Expert

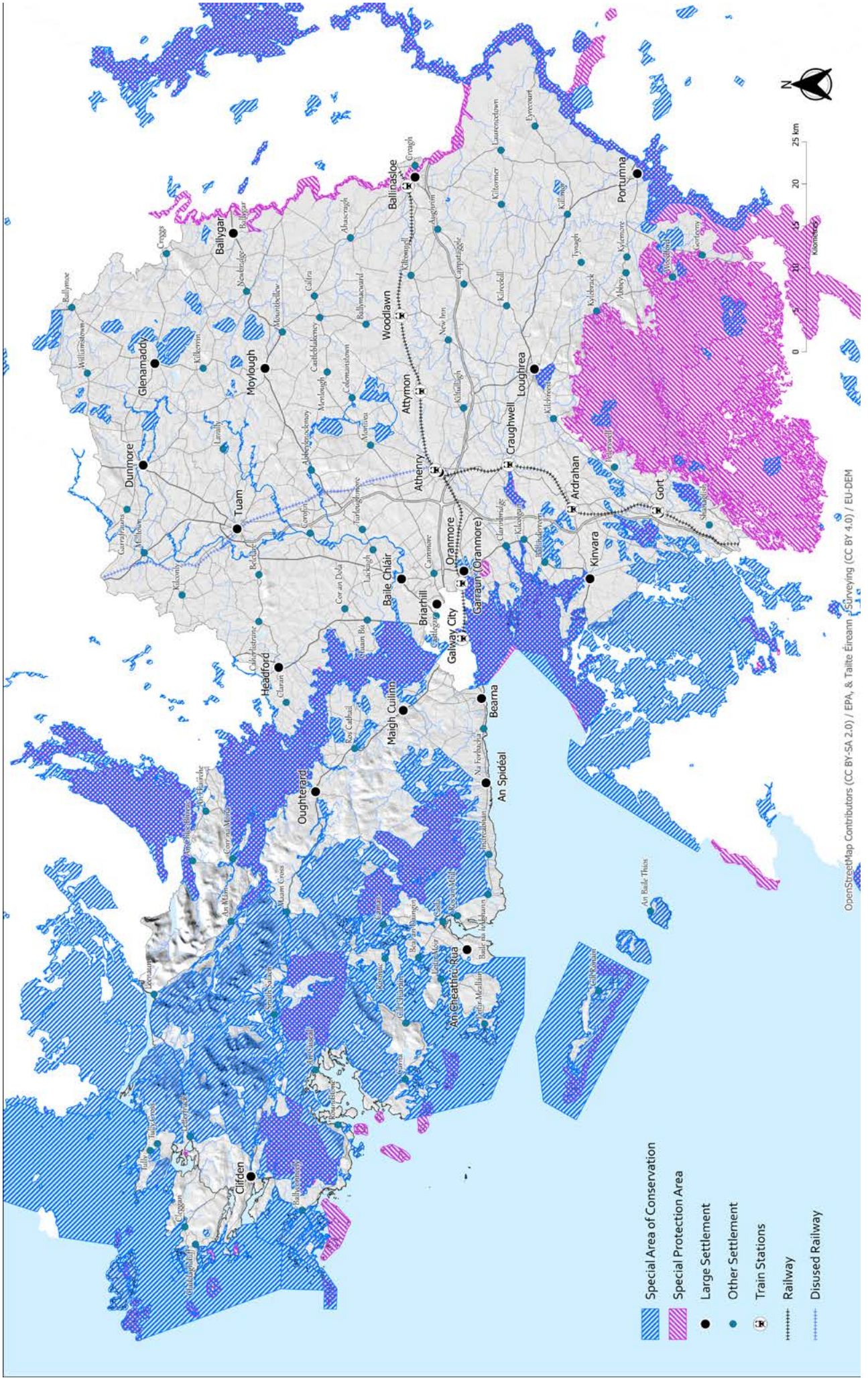


Appendix 4: Maps

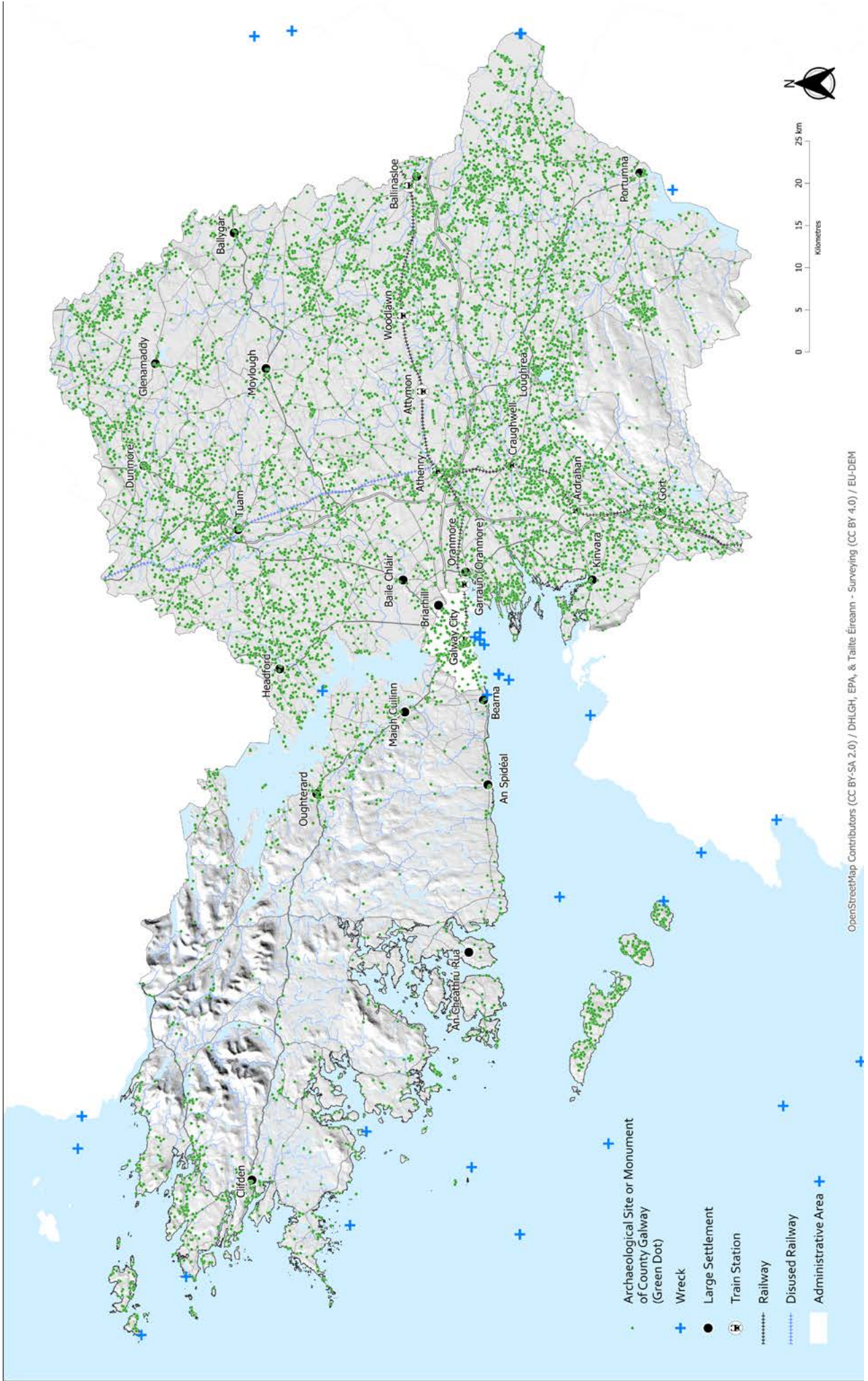




Map 1: Municipal Districts, settlements and major transport infrastructure of Galway County.



Map 2: Special Areas of Conservation and Special Protection Areas. For details on the NATURA 2000 sites see Appendix 10.



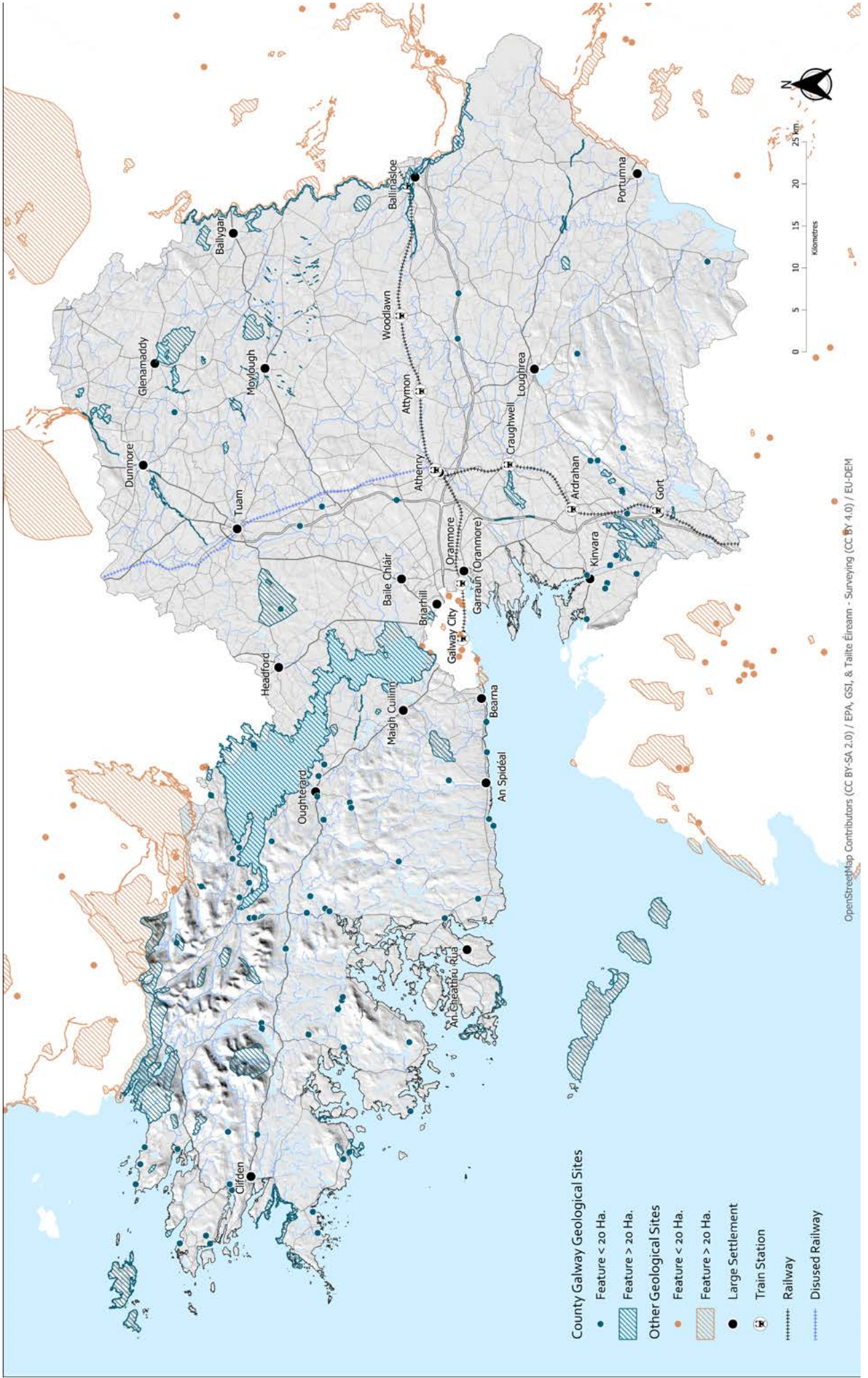
Map 6: Archaeological sites, monuments and wrecks of Galway County.



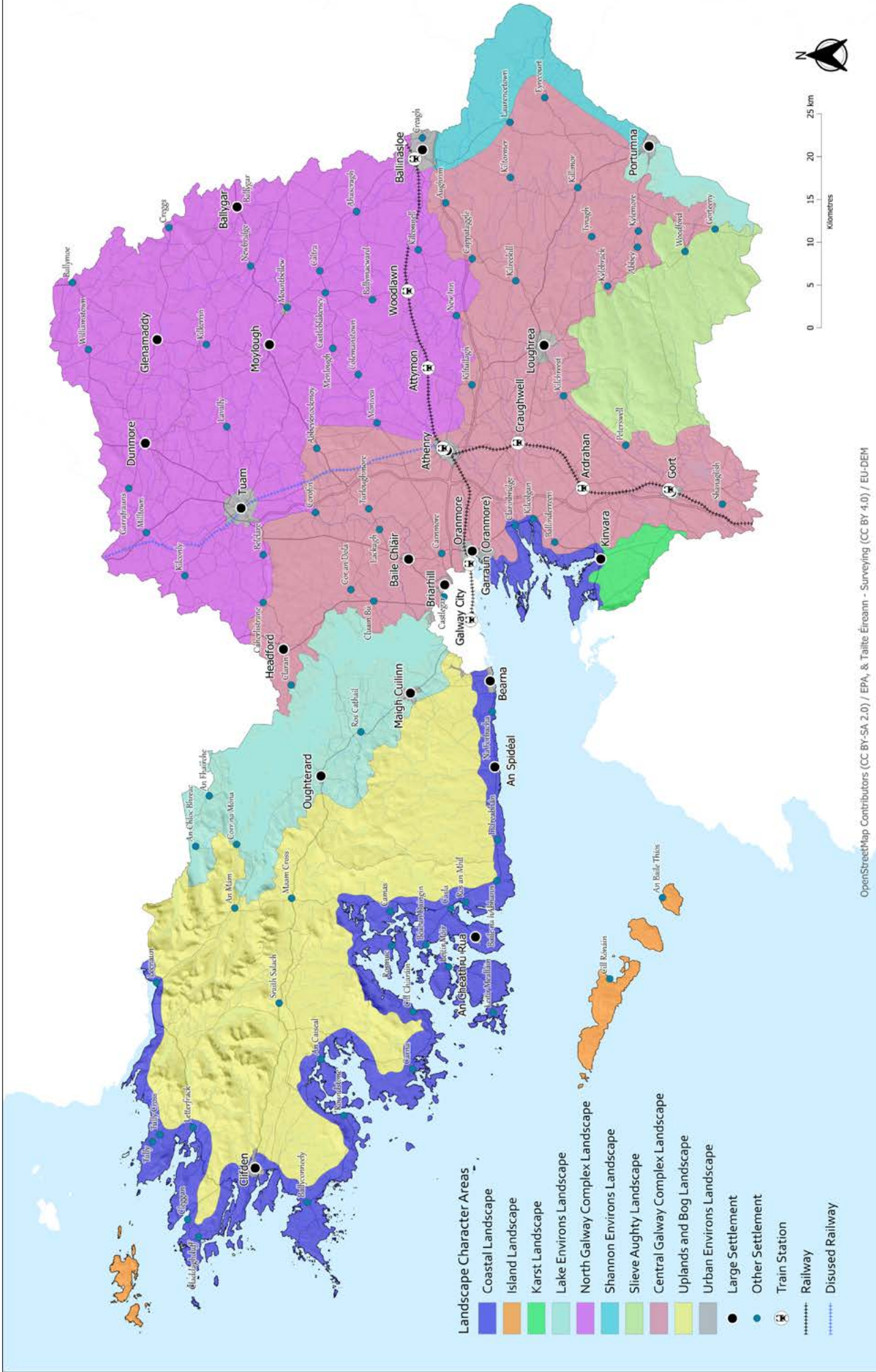
Map 7: Zones of archaeological potential (indicative locations).



Map 9: Architectural Conservation Areas (indicative locations).



Map 10: Geological heritage sites of Galway County.



OpenStreetMap Contributors (CC BY-SA 2.0) / EPA, & Tailte Éireann - Surveying (CC BY 4.0) / EU-DEM

Map 11: Landscape Character Areas (LCAs).

Appendix 5: Overview and Selected Heritage and Biodiversity Achievements of 2017–2022

Galway County Heritage and Biodiversity Plan 2017-2022 has made significant strides in promoting the rich built, cultural, natural heritage and biodiversity of the county. Through collaborative efforts involving local communities, organisations and government bodies, the plan has achieved a number of selective milestones that highlight its impact.

Féile na gCloch

Féile na gCloch, or “Festival of Stone,” is an annual event established in Inis Oírr, Co Galway in 2006. It celebrates the artistry and heritage of stonework through workshops in dry stone walling, stone carving, lettering, sketching, and hot lime mortar. The festival brings together craftspeople, artists, and enthusiasts from Ireland and beyond, offering a unique chance to engage with traditional stonework techniques and experience the rich culture of Inis Oírr.

Founded by Galway County Council Heritage Office, Comhar Caomhain Teo, Inis Oírr and Pat McAfee, Master stonemason the festival is supported by the local community and various stone walling practitioners, the Heritage Council and the Department of Tourism, Culture, Arts, Gaeltacht, Sport and Media.

Féile na gCloch aims to preserve and promote the traditions of drystone walling while fostering community among participants by bringing together people with shared interests and promoting collaboration and networking within the stonework industry. It serves as a significant source of income for local businesses, attracting visitors who return to showcase their work. Through hands-on activities, attendees can enhance their skills, learn about the cultural significance of stonework, and build connections within the craft community.



Liam Conneally, Chief Executive, Galway County Council at Féile na gCloch -
Marie Mannion

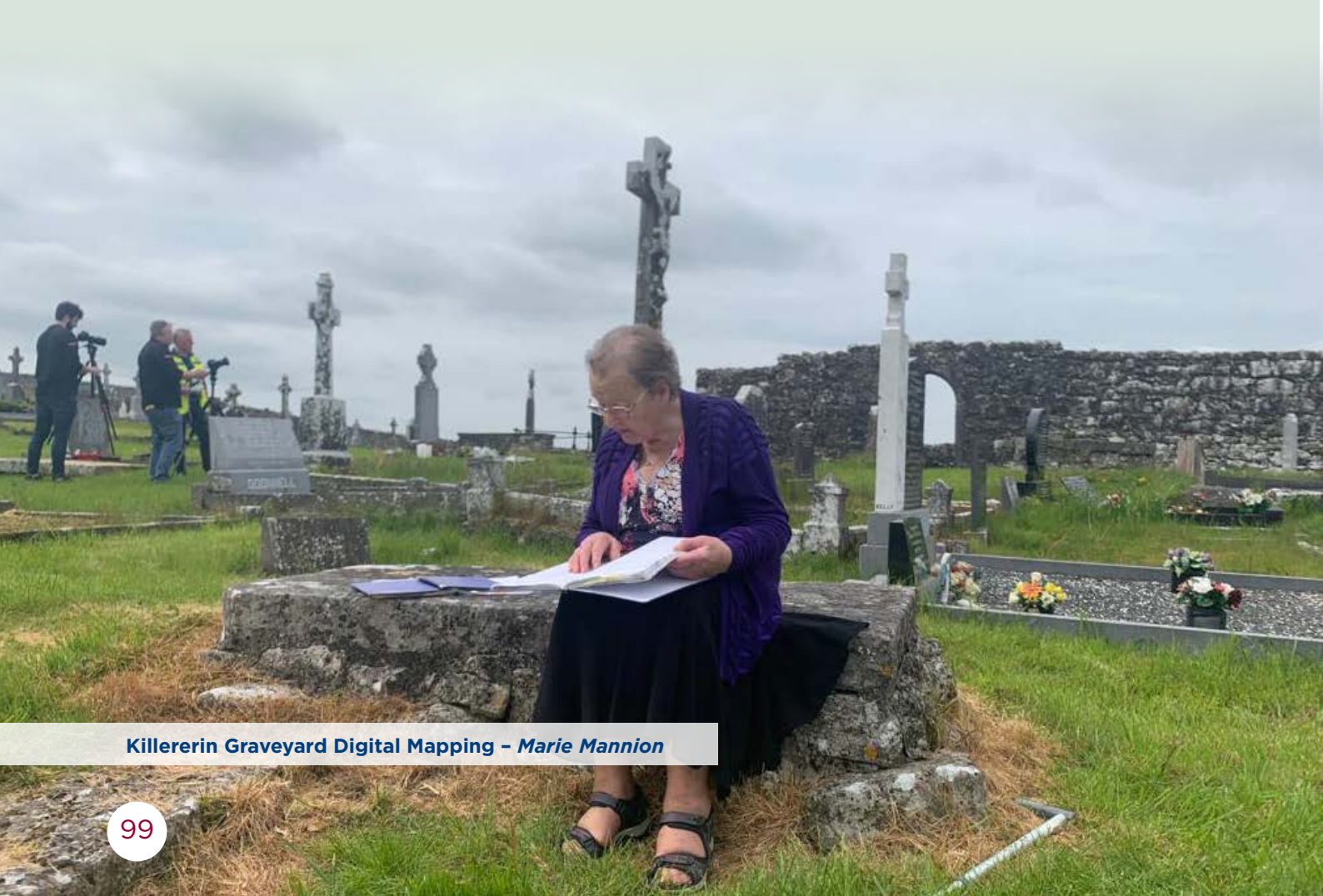
Digital Mapping of Graveyards

The aim of the project is to support our communities and diaspora to connect with their past by unlocking valuable graveyard data sources and making them available as open-source data that will be free for all to use.

Galway County Council working with various community groups and organisations have been collecting and collating valuable data relating to those who are buried in various graveyards for several years. Galway County Council, with funding from the Heritage Council, the Open Data Engagement Fund and it's own resources has developed and made available an app specifically for use by surveyors at the local level for memorial surveys, along with associated data management and validation processes. In addition to this Galway County Council, Galway Rural Development, Forum Connemara and the Heritage Council has provided funding to local groups to employ experts to work with and train communities on how to use this technology and to undertake drone mapping of graveyards. Through this funding and the hard work and dedication of community volunteers we now are in the position to make available these 40,000 records.

It is proposed to transfer and update more memorial records and also to map graveyards and record further memorial inscriptions in the coming years; subject to available resources. A Burial Search Application has been created to allow easy searching and display of the data.

This information is available at galwaycoco.maps.arcgis.com/home/index.html





Holy Wells Exhibition, Inis Oírr - Áras Éanna

Audit of Holy Wells

The Audit of the Holy Wells of the County of Galway was initiated in order to gather together as much information as possible about this valuable aspect of our intangible heritage. The Audit has been undertaken in a series of phases, due to the geographical spread of the County of Galway and the number of recorded (Records of Monuments and Places – National Monuments Service) and potentially unrecorded holy wells present.

Phase 1 which was carried out in 2020 involved the planning and development of a comprehensive, future proofed, digital field data collection methodology and a searchable database for storage and dissemination of information, which has been shared with other County led Holy Wells Audits for their use. It also provided a baseline of information, collected through desk research and community consultation. From this base, field survey commenced using the designated Municipal Areas of the County as the organisational units. During Phase 2 in 2021, the holy wells of the Municipal Areas of Loughrea and Ballinasloe were the focus for field recording. In Phase 3 (2022), Tuam and Oranmore/Athenry Municipal Areas were audited. Due to the large geographical area covered in the Conamara Municipal Area, it was divided into two blocks for the purpose of audit. Phase 4 (2023) involved the audit of the Holy Wells in the North Conamara area using the N59 roadway between Galway and Clifden as the dividing line. Phase 5 (2024), continued the audit into South Conamara and the offshore islands.

The aim of the Audit of the Holy Wells of the County of Galway is to collect and collate information which may be in danger of being lost due to a largely, older generational knowledge base and land development pressures, including drainage and/or clearance. The data being collected through the County-wide audit of each holy well includes location, infrastructure, physical condition, access, protection status, ownership, archaeology, biodiversity, traditions, folklore, oral heritage and customs associated with and connected to the holy wells. This information will be used to develop high quality promotional resources for this aspect of the County's Heritage in the longer term.



Audit of Oral Heritage Collections in the County of Galway

The overall aim of this project is to conduct an audit of oral heritage recordings and/or collections related to topics, people or places within the county of Galway. In doing so, the project intends to provide a broad and coherent representation of oral heritage recordings, collected over many decades, relating to the oral tradition and folklore of county.

The project commenced in the East of the County in 2023 and in Conamara in 2024. In the East of the county 1,035 recording identified and documented. They were both long and short form interviews. In Conamara a total of 3,193 recording items were identified, consisting of both long and short form interviews and recordings, within thirty-eight collections and over thirty holding institutions or Collection Holders.

Many of the collections were stored on various media types, including cassettes (audio), reel-to-reel tapes, VHS, CDs, and digital files. The audit identified concerns over certain collections which remain on their original analogue format. As technology has evolved, so have the media on which recordings have been made. It is an increasing challenge to preserve and maintain access to recordings on redundant technologies such as reel to reel, DAT and compact discs. Further work will be undertaken in the coming years relating to this project.

Barn Owl Conservation

The Barn Owl is Red-listed on the Birds of Conservation Concern in Ireland due to extensive declines in their breeding range and numbers over recent decades. The first county-wide survey of Barn Owls in Galway in 2021 was carried out by BirdWatch Ireland and supported by Galway County Council and the National Parks and Wildlife Service and shows positive signs of a population recovery in the county for the first time in fifty years. The breeding range of Barn Owls in County Galway has increased substantially (67%) over the last ten years and is now similar to the range observed fifty years ago, prior to the extensive population declines observed throughout the county and nationally. Annual monitoring of Barn Owl populations has continued since the county-wide survey, with now more than 50 Barn Owl nest sites recorded in the county, and a nest box scheme has been initiated to provide safe and secure nest sites for the species.



Barn Owl Conservation – *John Lusby*



Galway County Council, working with the aforementioned partners have also produced practical conservation guidance materials (including on the provision of nest boxes, best practice rodent control and habitat creation and enhancement) to help farmers and others implement conservation actions for Barn Owls and biodiversity, as well as a children's book on Barn Owls which was provided to all national schools in the county to raise awareness of this magnificent species and its conservation needs.

Barn Owl at Coole Park – *Margaux Pierrel*



Aghrane Forest, Ballygar - *Shane Coyle*

Appendix 6: Public Consultation - Have Your Say



Comhairle Chontae na Gaillimhe
Galway County Council

A New Heritage & Biodiversity Plan for the County of Galway 2024 - 2030

Have Your Say | Public Consultation

Galway County Council and Galway County Heritage & Biodiversity Forum are in the process of developing a new *Heritage & Biodiversity Plan for the County of Galway 2024 - 2030*.

We would like to know what **you** think should be included in the new Heritage & Biodiversity Plan which aims to build on the achievements of the previous plans, while taking into account local, regional and national heritage initiatives and policy developments during the span of the last plan and more recent times.

The Heritage & Biodiversity Plan will be a strategic document, dealing with heritage and biodiversity issues in the County of Galway; it will include broad objectives and identify specific actions to achieve those objectives. It will not generally include site-specific projects.

NB: This plan will not outline objectives and actions that are specific to climate change; a separate Climate Action Plan 2024 - 2029 has been drafted by the Climate Action Team; see <https://consult.galway.ie/en/consultation/galway-county-council-local-authority-climate-action-plan-2024-2029>

Have Your Say

Submissions specifically relating to heritage and biodiversity can be made in a variety of ways:

by post: post your submission to:
Galway County Heritage & Biodiversity Plan Submission,
c/o Gina Shaughnessy,
Áras an Chontae,
Galway County Council,
Prospect Hill,
Galway.

by e-mail: e-mail your submission to heritage@galwaycoco.ie

Galway County Heritage and Biodiversity Plan 2024-2030

in person: by attending one of the public consultation meetings which will be held as follows:

Monday 15th April	11am – 1pm	Oughterard Court House, Oughterard, Co. Galway H91 XWH9
Monday 15th April	7pm – 9pm	Oranmore Lodge Hotel, Oranmore, Co. Galway H91 NN76
Tuesday 16th April	11am – 1pm	Milltown Community Centre, Milltown, Tuam, Co Galway H54 D579
Thursday 18th April	11am – 1pm	Abbey Community Centre, Abbey, Loughrea, Co. Galway H62 VY38
Thursday 18th April	7pm – 9pm	Ballygar Court House, Ballygar, Co. Galway

Please, indicate whether your submission is your personal opinion or represents the opinion(s) of a community group or local organisation, and whether you or those you represent agree to be named as consultees in the final version of the plan.

Closing date for submissions:

Please note that all submissions must be received by **Monday 22nd April 2024 at 4pm.**

We will appreciate your input and taking the time to make your submission.

Your views are important to us.

Marie Mannion, Heritage Officer, Galway County Council

Rosina Joyce, Biodiversity Officer, Galway County Council

The development of *Galway County Heritage & Biodiversity Plan 2024-2030* is supported by the Heritage Council.



Appendix 7: Summary of Online and Written Feedback

In order to open the consultation process to a wider audience, an online consultation portal was made available on Galway County Council's website from 24th July to 25th August 2023. Through the portal, a survey consisting of 19 questions, with a mix of multiple-choice and open-answer formats, sought input for both Galway County Council's Local Authority Climate Action Plan 2024 and the Heritage and Biodiversity Plan 2024-2030. Contributors were not required to register and no questions were mandatory. Submissions were also accepted via e-mail to the Heritage and Biodiversity Officers.

In total 177 responses were received via the online consultation portal and an additional 11 responses via e-mail within the submission deadline. There was one subsequent submission received after the deadline.

Of those who responded via the online consultation portal, 90% either lived, worked or lived and worked, in County Galway and 64% were members of a relevant voluntary organisation, with local environment and heritage groups accounting for the majority of these. A similar distribution was observed in the e-mail submissions.

Broadly speaking, the submissions received demonstrated a clear appetite within communities for greater engagement, knowledge-sharing and support, coupled with a recognition that additional resources may be required to provide mentoring and support to the desired levels of input by communities, with particular emphasis placed on getting their young members involved.

It was encouraging to note that most of the issues raised in the submissions were addressed by objectives and actions included in the 2017-2023 plan. A number of 'new' issues were also identified and these were referred to the Galway County Heritage Forum for consideration during the drafting of the present plan.

Key biodiversity issues of concern to those who made submissions included: pesticide and fertiliser use, habitat loss, the impacts of climate change on biodiversity, education and awareness, working with farming communities, enforcement of existing controls, the creation of biodiversity-friendly public spaces and environmentally-friendly transport infrastructure.

Key heritage issues identified included: heritage-led regeneration, heritage-led tourism, education and engagement, including with new and diverse communities, sustainable land management, access to and interpretation of heritage sites, the impacts of climate change on heritage and promoting best practice for identifying, accessing, documenting and preserving heritage.

Common to both thematic areas was a recognition of the vital role played by volunteers and voluntary organisations in the protection and promotion of heritage and biodiversity in County Galway and of the need to support volunteers to continue to play that important role, even if such support in a large county like Galway requires recruiting more outreach personnel.

Appendix 8: Face-to-face Public Consultation Workshops Summary of Views Expressed

In-person public consultation workshops were held between April 15 and 20, 2024 in Oranmore, Milltown, Killererin, Abbey, Ballygar, Oughterard and Leitir Mealláin.

Summary of Views Expressed

Environmental sustainability, sense of place and sense of community were the highest ranked responses to the opinion question: “Why is the heritage and biodiversity of the County of Galway important to you?”

Conservation and care, raising awareness and communication, working with the communities, climate change, sustainable heritage and biodiversity management and promoting best practice were the highest ranked responses to the direction: “Rank the three most important strategic areas that the new plan should prioritise”.

Common themes arose from each of the workshops’ round-table discussions. The following specific difficulties and suggested actions were particularly emphasised:

Difficulty in accessing funding – in terms of knowing when the application process is happening, working through the red tape and competing with other groups for funding. Actions suggested included:

- provide an ‘expert advisor’ to assist local heritage groups to navigate their way through funding applications and project delivery;
- provide more timely notice of when funding becomes available.

Difficulty in obtaining information on the permitted use of fertilisers and pesticides, invasive species, suitable native species and local planning laws by Tidy Town groups etc.; the use of pesticides by local authority maintenance crews in public spaces was often challenged. Actions suggested:

- develop working groups between community groups, County Council (area offices) and NPWS;
- incorporate biodiversity and heritage training in all County Council departments and developments;
- provide knowledge/education about biodiversity and its importance to local communities, especially in urban areas;
- recognise the ‘Rights of Nature’ as an intrinsic and integral part in all plans and developments.



European otter – *Shane Coyle*

Difficulties in recruiting volunteers and keeping up their commitment and motivation, and difficulties in developing 'buy-in' from the wider community. Lack of education and awareness of biodiversity and heritage. Actions suggested:

- create an avenue for youth groups to get involved in local projects and have a recognition for their contribution, e.g. Gaisce Award, local competitions. Promote inter-generational projects connecting youth with Active Retirement groups, GAA, Men's and Women's Sheds etc.;
- provide informal information evenings and education with professional talks relating to biodiversity and heritage;
- use local experts as 'ambassadors' to share knowledge.

Lack of enforcement of monument and biodiversity protection legislation. Low level of awareness among local communities of the number of heritage sites in the County. Actions suggested:

- create two-way communications between local authorities (including NMS and OPW) and community groups;
- increase visibility of relevant heritage and biodiversity departments within communities;
- undertake awareness raising and develop more built heritage and biodiversity survey work, e.g. graveyard survey, providing information on County-wide sites of interest.



St. Brendan the Navigator, Kilmilkin Church - *Robbie Riddle*

Appendix 9: Summary of Art Workshop Process and Feedback

Between the 16th and 25th of April 2024, a series of consultations, delivered through six interactive creative workshops, were carried out with minority groups throughout County Galway, in conjunction with the *Wishing Tree Project*.

Target groups: Inishbofin primary school pupils, Transition Year students at Seamount College in Kinvara, 'new communities' in Carna, Brothers of Charity service users at Kilcornan House in Clarinbridge, an Active Retirement group in Mountbellew and the Travelling Community in Tuam.

Age range: These workshops involved people within an age range from 4 years to 80+.

Aim: To provide an inclusive, non-judgmental, fun session where all voices are heard and valued. Throughout these workshops, data were gathered through tailor-made activities, geared specifically for each group, with opportunities for expressing personal opinions, discussions and answering questionnaires in relation to the subjects of Heritage and Biodiversity.

Project size: In total there were 117 participants. Feedback was received by studying the work carried out within each group, the issues raised during discussions and the answers to the questionnaires.





Active Retirement Mountbellew Public Consultation – *Maria Hitchcox*

Key issues of concern:

- Decline of community support and community groups. Families being separated due to difficulties obtaining planning permission, therefore leaving rural areas to become lonely and isolated.
- Lack of accessibility to some natural beauty spots in the west of the county.
- Families on Inishbofin being divided between the island and the mainland as a result of not having a local secondary school.
- The downside of living in a beautiful tourist area such as Kinvara is that the teenagers cannot gain access to local transport as the buses are full due to tourism.
- The Travelling Community had concerns about interaction with and between other groups in their community and felt that more inclusive support groups are needed.
- Road safety issues were raised by the staff in Kilcornan House as cars are being driven too fast within the grounds where the service users walk. A lack of proper dog poo bins and not enough accessible amenities available in the village were also issues of concern.
- The active retirement group felt there is a need for more activities within their community to encourage people of all ages to mix and develop friendships.
- The older people who took part in this consultation were very fearful of loneliness and isolation and felt modern life is moving too fast, leaving behind old skills, customs and traditions which make us who we are. We discussed the possibility of creating inclusive events where the older generation could teach our younger population valuable practices such as farming, cooking, gardening, mending, story-telling and songs.

Appendix 10: NATURA 2000 Sites and Their Qualifying Interests

Site Name & Code	Features of Qualifying Interest
Ardgraique Bog SAC (002356)	7110 Active raised bogs 7120 Degraded raised bogs still capable of natural regeneration 7150 Depressions on peat substrates of the <i>Rhynchosporion</i>
Ardrahan Grassland SAC (002244)	4060 Alpine and Boreal heaths 5130 <i>Juniperus communis</i> formations on heaths or calcareous grasslands 6210 Semi-natural dry grasslands and scrubland facies on calcareous substrates 8240 Limestone pavements*
Aughrim (Aghrane) Bog SAC (002200)	7120 Degraded raised bogs still capable of natural regeneration
Aughrusbeg Machair and Lake SAC (001228)	3130 Oligotrophic to mesotrophic standing waters with vegetation of the <i>Littorelletea uniflorae</i> and/or <i>Isoëto-Nanojuncetea</i> 4010 Northern Atlantic wet heaths with <i>Erica tetralix</i>
Ballinduff Turlough SAC (002295)	3180 Turloughs*
Ballygar (Aghrane) Bog SAC (002199)	7110 Active raised bogs* 7120 Degraded raised bogs still capable of natural regeneration
Ballymaglancy Cave, Cong SAC (000474)	1303 Lesser Horseshoe Bat <i>Rhinolophus hipposideros</i> 8310 Caves not open to the public
Barnahallia Lough SAC (002118)	1833 Slender Naiad <i>Najas flexilis</i> 3130 Oligotrophic to mesotrophic standing waters with vegetation of the <i>Littorelletea uniflorae</i> and/or <i>Isoëto-Nanojuncetea</i>
Barroughter Bog SAC (000231)	7110 Active raised bogs 7120 Degraded raised bogs still capable of natural regeneration 7150 Depressions on peat substrates of the <i>Rhynchosporion</i>

Site Name & Code	Features of Qualifying Interest
Caherglassaun Turlough SAC (000238)	1303 Lesser Horseshoe Bat <i>Rhinolophus hipposideros</i> 3180 Turloughs 3270 Rivers with muddy banks with <i>Chenopodium rubri</i> p.p. and <i>Bidention</i> p.p. vegetation
Cahermore Turlough SAC (002294)	3180 Turloughs*
Camderry Bog SAC (002347)	7110 Active raised bogs 7120 Degraded raised bogs still capable of natural regeneration 7150 Depressions on peat substrates of the <i>Rhynchosporion</i>
Carrowbaun, Newhall and Ballylee Turloughs SAC (002293)	3180 Turloughs*
Carrownagappul Bog SAC (001242)	7110 Active raised bogs 7120 Degraded raised bogs still capable of natural regeneration 7150 Depressions on peat substrates of the <i>Rhynchosporion</i>
Castletaylor Complex SAC (000242)	3180 Turloughs* 4060 Alpine and Boreal heaths 5130 <i>Juniperus communis</i> formations on heaths or calcareous grasslands 6210 Semi-natural dry grasslands and scrubland facies on calcareous substrates (<i>Festuco-Brometalia</i>) (* important orchid sites) 8240 Limestone pavements*
Cloonmoylan Bog SAC (000248)	7110 Active raised bogs 7120 Degraded raised bogs still capable of natural regeneration 7150 Depressions on peat substrates of the <i>Rhynchosporion</i> 91D0 Bog woodland

Site Name & Code	Features of Qualifying Interest
Connemara Bog Complex SAC (002034)	<p>1065 Marsh Fritillary <i>Euphydryas aurinia</i></p> <p>1106 Salmon <i>Salmo salar</i></p> <p>1150 Coastal lagoons</p> <p>1170 Reefs 1355 Otter <i>Lutra lutra</i></p> <p>1833 Slender Naiad <i>Najas flexilis</i></p> <p>3110 Oligotrophic waters containing very few minerals of sandy plains (<i>Littorelletalia uniflorae</i>)</p> <p>3130 Oligotrophic to mesotrophic standing waters with vegetation of the <i>Littorelletea uniflorae</i> and/or <i>Isoeto-Nanojuncetea</i></p> <p>3160 Natural dystrophic lakes and ponds</p> <p>3260 Water courses of plain to montane levels with the <i>Ranunculion fluitantis</i> and <i>Callitricho-Batrachion</i> vegetation</p> <p>4010 Northern Atlantic wet heaths with <i>Erica tetralix</i></p> <p>4030 European dry heaths</p> <p>6410 <i>Molinia</i> meadows on calcareous, peaty or clayey-silt-laden soils (<i>Molinion caeruleae</i>)</p> <p>7130 Blanket bogs (* if active bog)</p> <p>7140 Transition mires and quaking bogs</p> <p>7150 Depressions on peat substrates of the <i>Rhynchosporion</i></p> <p>7230 Alkaline fens</p> <p>91A0 Old sessile oak woods with <i>Ilex</i> and <i>Blechnum</i> in the British Isles</p>
Connemara Bog Complex SPA (004181)	<p>A017 Cormorant <i>Phalacrocorax carbo</i></p> <p>A098 Merlin <i>Falco columbarius</i></p> <p>A140 Golden Plover <i>Pluvialis apricaria</i></p> <p>A182 Common Gull <i>Larus canus</i></p>
Coolcam Turlough SAC (000218)	<p>3180 Turloughs*</p>

Site Name & Code	Features of Qualifying Interest
Coole-Garryland Complex SAC (000252)	1303 Lesser Horseshoe Bat <i>Rhinolophus hipposideros</i> 3150 Natural eutrophic lakes with <i>Magnopotamion</i> or <i>Hydrocharition</i> - type vegetation 3180 Turloughs* 3270 Rivers with muddy banks with <i>Chenopodion rubri p.p.</i> and <i>Bidention p.p.</i> vegetation 5130 <i>Juniperus communis</i> formations on heaths or calcareous grasslands 6210 Semi-natural dry grasslands and scrubland facies on calcareous substrates (<i>Festuco-Brometalia</i>) (* important orchid sites) 8240 Limestone pavements* 91J0 <i>Taxus baccata</i> woods of the British Isles*
Coole-Garryland SPA (004107)	A038 Whooper Swan <i>Cygnus cygnus</i>
Corliskea/Trien/Cloonfelliv Bog SAC (002110)	7110 Active raised bogs 7120 Degraded raised bogs still capable of natural regeneration 7150 Depressions on peat substrates of the <i>Rhynchosporion</i> 91D0 Bog woodland
Cregduff Lough SAC (001251)	1833 Slender Naiad <i>Najas flexilis</i> 7140 Transition mires and quaking bogs
Cregg House Stables, Crusheen SAC (002317)	1303 Lesser Horseshoe Bat <i>Rhinolophus hipposideros</i>
Cregganna Marsh SPA (004142)	A395 Greenland White-fronted Goose <i>Anser albifrons flavirostris</i>
Croaghill Turlough SAC (000255)	3180 Turloughs*
Cruagh Island SPA (004170)	A013 Manx Shearwater <i>Puffinus puffinus</i> A045 Barnacle Goose <i>Branta leucopsis</i>
Curraglehanagh Bog SAC (002350)	7110 Active raised bogs 7120 Degraded raised bogs still capable of natural regeneration 7150 Depressions on peat substrates of the <i>Rhynchosporion</i>
Derrinlough (Cloon-keenleananode) Bog SAC (002197)	7120 Degraded raised bogs still capable of natural regeneration

Site Name & Code	Features of Qualifying Interest
Derrycrag Wood Nature Reserve SAC (000261)	91A0 Old sessile oak woods with <i>Ilex</i> and <i>Blechnum</i> in the British Isles
Dog's Bay SAC (001257)	1210 Annual vegetation of drift lines 2110 Embryonic shifting dunes 2120 Shifting dunes along the shoreline with <i>Ammophila arenaria</i> (white dunes) 2130 Fixed coastal dunes with herbaceous vegetation (grey dunes) 4030 European dry heaths
Drummin Wood SAC (002181)	91A0 Old sessile oak woods with <i>Ilex</i> and <i>Blechnum</i> in the British Isles
East Burren Complex SAC (001926)	1065 Marsh Fritillary <i>Euphydryas aurinia</i> 1303 Lesser Horseshoe Bat <i>Rhinolophus hipposideros</i> 1355 Otter <i>Lutra lutra</i> 3140 Hard oligo-mesotrophic waters with benthic vegetation of <i>Chara spp.</i> 3180 Turloughs* 3260 Water courses of plain to montane levels with the <i>Ranunculion fluitantis</i> and Callitricho-Batrachion vegetation 4060 Alpine and boreal heaths 5130 Juniperus communis formations on heaths or calcareous grasslands 6130 Calaminarian grasslands of the <i>Violetalia calaminariae</i> 6210 Semi-natural dry grasslands and scrubland facies on calcareous substrates (<i>Festuco-Brometalia</i>) (* important orchid sites) 6510 Lowland hay meadows (<i>Alopecurus pratensis</i> , <i>Sanguisorba officinalis</i>) 7210 Calcareous fens with <i>Cladium mariscus</i> and species of the <i>Caricion davallianae</i> * 7220 Petrifying springs with tufa formation (<i>Cratoneurion</i>)* 7230 Alkaline fens 8240 Limestone pavements* 8310 Caves not open to the public 91E0 Alluvial forests with <i>Alnus glutinosa</i> and <i>Fraxinus excelsior</i> (<i>Alno-Padion</i> , <i>Alnion incanae</i> , <i>Salicion albae</i>)*

Site Name & Code	Features of Qualifying Interest
Galway Bay Complex SAC (000268)	<p>1140 Mudflats and sandflats not covered by seawater at low tide</p> <p>1150 Coastal lagoons*</p> <p>1160 Large shallow inlets and bays</p> <p>1170 Reefs</p> <p>1220 Perennial vegetation of stony banks</p> <p>1310 <i>Salicornia</i> and other annuals colonising mud and sand.</p> <p>1330 Atlantic salt meadows (<i>Glauco-Puccinellietalia maritimae</i>)</p> <p>1355 Otter <i>Lutra lutra</i></p> <p>1365 Harbour seal <i>Phoca vitulina</i></p> <p>1410 Mediterranean salt meadows (<i>Juncetalia maritimi</i>)</p> <p>3180 Turloughs*</p> <p>5130 <i>Juniperus communis</i> formations on heaths or calcareous grasslands</p> <p>6210 Semi-natural dry grasslands and scrubland facies on calcareous substrates (<i>Festuco Brometalia</i>)(*important orchid sites)</p> <p>7210 Calcareous fens with <i>Cladium mariscus</i> and species of the <i>Caricion davallianae</i>*</p> <p>7230 Alkaline fens</p>
Glenloughaun Esker SAC (002213)	6210 Semi-natural dry grasslands and scrubland facies on calcareous substrates (<i>Festuco-Brometalia</i>) (* important orchid sites)
Gortacarnaun Wood SAC (002180)	91A0 Old sessile oak woods with <i>Ilex</i> and <i>Blechnum</i> in the British Isles
Gortnandarragh Limestone Pavement SAC (001271)	8240 Limestone pavements*
High Island, Inishshark and Davillaun SPA (004144)	<p>A009 Fulmar <i>Fulmarus glacialis</i></p> <p>A045 Barnacle Goose <i>Branta leucopsis</i></p> <p>A194 Arctic Tern <i>Sterna Paradisaea</i></p>
Ilannan SPA (004221)	A191 Sandwich Tern <i>Sterna sandvicensis</i>

Site Name & Code	Features of Qualifying Interest
Inishbofin and Inishshark SAC (000278)	<p>1150 Coastal lagoons</p> <p>1364 Grey Seal <i>Halichoerus grypus</i></p> <p>3110 Oligotrophic waters containing very few minerals of sandy plains (<i>Littorelletalia uniflorae</i>)</p> <p>4010 Northern Atlantic wet heaths with <i>Erica tetralix</i></p> <p>4030 European dry heaths</p>
Inishbofin, Omev Island and Turbot Island SPA (004231)	<p>A122 Corncrake <i>Crex crex</i></p>
Inisheer Island SAC (001275)	<p>1150 Coastal lagoons</p> <p>1170 Reefs</p> <p>4030 European dry heaths</p> <p>6210 Semi-natural dry grasslands and scrubland facies on calcareous substrates (<i>Festuco Brometalia</i>)(*important orchid sites)</p> <p>6510 Lowland hay meadows (<i>Alopecurus pratensis</i>, <i>Sanguisorba officinalis</i>)</p> <p>8240 Limestone pavements</p>
Inishmaan Island SAC (000212)	<p>1170 Reefs</p> <p>1220 Perennial vegetation of stony banks</p> <p>1230 Vegetated sea cliffs of the Atlantic and Baltic coasts</p> <p>2110 Embryonic shifting dunes</p> <p>2120 Shifting dunes along the shoreline with <i>Ammophila arenaria</i> (white dunes)</p> <p>21A0 Machairs (* in Ireland)</p> <p>4030 European dry heaths</p> <p>6210 Semi-natural dry grasslands and scrubland facies on calcareous substrates (<i>Festuco-Brometalia</i>) (* important orchid sites)</p> <p>6510 Lowland hay meadows (<i>Alopecurus pratensis</i>, <i>Sanguisorba officinalis</i>)</p> <p>8240 Limestone pavements</p>

Site Name & Code	Features of Qualifying Interest
<p>Inishmore Island SAC (000213)</p>	<p>1014 Narrow-mouthed Whorl Snail <i>Vertigo angustior</i></p> <p>1150 Coastal lagoons</p> <p>1170 Reefs</p> <p>1220 Perennial vegetation of stony banks</p> <p>1230 Vegetated sea cliffs of the Atlantic and Baltic coasts</p> <p>2110 Embryonic shifting dunes</p> <p>2120 Shifting dunes along the shoreline with <i>Ammophila arenaria</i> (white dunes)</p> <p>2130 Fixed coastal dunes with herbaceous vegetation (grey dunes)</p> <p>2170 Dunes with <i>Salix repens</i> subsp. <i>argentea</i> (<i>Salicion arenariae</i>)</p> <p>2190 Humid dune slacks</p> <p>21A0 Machairs (* in Ireland)</p> <p>4030 European dry heaths</p> <p>4060 Alpine and Boreal heaths</p> <p>6210 Semi-natural dry grasslands and scrubland facies on calcareous substrates (<i>Festuco-Brometalia</i>) (* important orchid sites)</p> <p>6510 Lowland hay meadows (<i>Alopecurus pratensis</i>, <i>Sanguisorba officinalis</i>)</p> <p>8240 Limestone pavements</p> <p>8330 Submerged or partially submerged sea caves</p>
<p>Inishmore SPA (004152)</p>	<p>A188 Kittiwake <i>Rissa tridactyla</i></p> <p>A194 Arctic Tern <i>Sterna paradisaea</i></p> <p>A195 Little Tern <i>Sterna albifrons</i></p> <p>A199 Guillemot <i>Uria aalge</i></p>

Site Name & Code	Features of Qualifying Interest
Inner Galway Bay SPA (004031)	<p>A003 Great Northern Diver <i>Gavia immer</i></p> <p>A017 Cormorant <i>Phalacrocorax carbo</i></p> <p>A028 Grey Heron <i>Ardea cinerea</i></p> <p>A046 Brent Goose <i>Branta bernicla hrota</i></p> <p>A050 Wigeon <i>Anas penelope</i></p> <p>A052 Teal <i>Anas crecca</i></p> <p>A056 Shoveler <i>Anas clypeata</i></p> <p>A069 Red-breasted Merganser <i>Mergus serrator</i></p> <p>A137 Ringed Plover <i>Charadrius hiaticula</i></p> <p>A140 Golden Plover <i>Pluvialis apricaria</i></p> <p>A142 Lapwing <i>Vanellus vanellus</i></p> <p>A149 Dunlin <i>Calidris alpina alpina</i></p> <p>A157 Bar-tailed Godwit <i>Limosa lapponica</i></p> <p>A160 Curlew <i>Numenius arquata</i></p> <p>A162 Redshank <i>Tringa totanus</i></p> <p>A169 Turnstone <i>Arenaria interpres</i></p> <p>A179 Black-headed Gull <i>Chroicocephalus ridibundus</i></p> <p>A182 Common Gull <i>Larus canus</i></p> <p>A191 Sandwich Tern <i>Sterna sandvicensis</i></p> <p>A193 Common Tern <i>Sterna hirundo</i></p> <p>A999 Wetlands</p>
Kilkieran Bay and Islands SAC (002111)	<p>1140 Mudflats and sandflats not covered by seawater at low tide.</p> <p>1150 Coastal lagoons</p> <p>1160 Large shallow inlets and bays</p> <p>1170 Reefs</p> <p>1330 Atlantic salt meadows (<i>Glauco-Puccinellietalia maritimae</i>)</p> <p>1355 Otter <i>Lutra lutra</i></p> <p>1365 Harbour seal <i>Phoca vitulina</i></p> <p>1410 Mediterranean salt meadows (<i>Juncetalia maritimi</i>)</p> <p>1833 Slender Naiad <i>Najas flexilis</i></p> <p>21A0 Machairs (* in Ireland)</p> <p>6510 Lowland hay meadows (<i>Alopecurus pratensis</i>, <i>Sanguisorba officinalis</i>)</p>

Site Name & Code	Features of Qualifying Interest
Kilsallagh Bog SAC (000285)	7110 Active raised bogs 7120 Degraded raised bogs still capable of natural regeneration 7150 Depressions on peat substrates of the <i>Rhynchosporion</i>
Kiltartan Cave (Coole) SAC (000286)	1303 Lesser Horseshoe Bat <i>Rhinolophus hipposideros</i> 8310 Caves not open to the public
Kiltiernan Turlough SAC (001285)	3180 Turloughs*
Kingstown Bay SAC (002265)	1160 Large shallow inlets and bays
Levally Lough SAC (000295)	3180 Turloughs*
Lisnageeragh Bog and Ballinastack Turlough SAC (000296)	3180 Turloughs* 7110 Active raised bogs 7120 Degraded raised bogs still capable of natural regeneration 7150 Depressions on peat substrates of the <i>Rhynchosporion</i>
Lough Carra/Mask Complex SAC (001774)	1303 Lesser Horseshoe Bat <i>Rhinolophus hipposideros</i> 1355 Otter <i>Lutra lutra</i> 3110 Oligotrophic waters containing very few minerals of sandy plains (<i>Littorelletalia uniflorae</i>) 3130 Oligotrophic to mesotrophic standing waters with vegetation of the <i>Littorelletea uniflorae</i> and/or <i>Isoëto-Nanojuncetea</i> 7210 Calcareous fens with <i>Cladium mariscus</i> and species of the <i>Caricion davallianae</i> * 7230 Alkaline fens 8240 Limestone pavements* 91E0 Alluvial forests with <i>Alnus glutinosa</i> and <i>Fraxinus excelsior</i> (<i>Alno-Padion</i> , <i>Alnion incanae</i> , <i>Salicion albae</i>)* 3140 Hard oligo-mesotrophic waters with benthic vegetation of <i>Chara spp.</i> 4030 European dry heaths 6210 Semi-natural dry grasslands and scrubland facies on calcareous substrates 6216 Slender Green Feather-moss <i>Hamatocaulis vernicosus</i>

Site Name & Code	Features of Qualifying Interest
Lough Corrib SAC (000297)	<p>1029 Freshwater Pearl Mussel <i>Margaritifera margaritifera</i></p> <p>1092 White-clawed Crayfish <i>Austropotamobius pallipes</i></p> <p>1095 Sea Lamprey <i>Petromyzon marinus</i></p> <p>1096 Brook Lamprey <i>Lampetra planeri</i></p> <p>1106 Salmon <i>Salmo salar</i></p> <p>1303 Lesser Horseshoe Bat <i>Rhinolophus hipposideros</i></p> <p>1355 Otter <i>Lutra lutra</i></p> <p>1393 Slender Green Feather-moss <i>Drepanocladus vernicosus</i></p> <p>1833 Slender Naiad <i>Najas flexilis</i></p> <p>3110 Oligotrophic waters containing very few minerals of sandy plains (<i>Littorelletalia uniflorae</i>)</p> <p>3130 Oligotrophic to mesotrophic standing waters with vegetation of the <i>Littorelletea uniflorae</i> and/or <i>Isoeto-Nanojuncetea</i></p> <p>3140 Hard oligo-mesotrophic waters with benthic vegetation of <i>Chara spp.</i></p> <p>3260 Water courses of plain to montane levels with the <i>Ranunculion fluitantis</i> and <i>Callitriche-Batrachion</i> vegetation</p> <p>6210 Semi-natural dry grasslands and scrubland facies on calcareous substrates (<i>Festuco-Brometalia</i>) (* important orchid sites)</p> <p>6410 <i>Molinia</i> meadows on calcareous, peaty or clayey-silt-laden soils (<i>Molinia caeruleae</i>)</p> <p>7110 Active raised bogs</p> <p>7120 Degraded raised bogs still capable of natural regeneration</p> <p>7150 Depressions on peat substrates of the <i>Rhynchosporion</i></p> <p>7210 Calcareous fens with <i>Cladium mariscus</i> and species of the <i>Caricion davallianae</i></p> <p>7220 Petrifying springs with tufa formation (<i>Cratoneurion</i>)</p> <p>7230 Alkaline fens</p> <p>8240 Limestone pavements*</p> <p>91A0 Old sessile oak woods with <i>Ilex</i> and <i>Blechnum</i> in the British Isles</p> <p>91D0 Bog woodland</p>

Site Name & Code	Features of Qualifying Interest
Lough Corrib SPA (004042)	A051 Gadwall <i>Anas strepera</i> A056 Shoveler <i>Anas clypeata</i> A059 Pochard <i>Aythya ferina</i> A061 Tufted Duck <i>Aythya fuligula</i> A065 Common Scoter <i>Melanitta nigra</i> A082 Hen Harrier <i>Circus cyaneus</i> A125 Coot <i>Fulica atra</i> A140 Golden Plover <i>Pluvialis apricaria</i> A179 Black-headed Gull <i>Chroicocephalus ridibundus</i> A182 Common Gull <i>Larus canus</i> A193 Common Tern <i>Sterna hirundo</i> A194 Arctic Tern <i>Sterna paradisaea</i> A395 Greenland White-fronted Goose <i>Anser albifrons flavirostris</i> A999 Wetlands
Lough Coy SAC (002117)	3180 Turloughs*
Lough Cutra SAC (000299)	1303 Lesser Horseshoe Bat <i>Rhinolophus hipposideros</i>
Lough Cutra SPA (004056)	A017 Cormorant <i>Phalacrocorax carbo</i>
Lough Derg (Shannon) SPA (004058)	A017 Cormorant <i>Phalacrocorax carbo</i> A061 Tufted Duck <i>Aythya fuligula</i> A067 Goldeneye <i>Bucephala clangula</i> A193 Common Tern <i>Sterna hirundo</i> A999 Wetlands
Lough Derg, North-east Shore SAC (002241)	5130 <i>Juniperus communis</i> formations on heaths or calcareous grasslands 7210 Calcareous fens with <i>Cladium mariscus</i> and species of the <i>Caricion davallianae</i> 7230 Alkaline fens 8240 Limestone pavements 91E0 Alluvial forests with <i>Alnus glutinosa</i> and <i>Fraxinus excelsior</i> (<i>Alno-Padion</i> , <i>Alnion incanae</i> , <i>Salicion albae</i>) 91J0 <i>Taxus baccata</i> woods of the British Isles

Site Name & Code	Features of Qualifying Interest
Lough Fingall Complex SAC (000606)	1303 Lesser Horseshoe Bat <i>Rhinolophus hipposideros</i> 3180 Turloughs* 4060 Alpine and Boreal heaths 5130 <i>Juniperus communis</i> formations on heaths or calcareous grasslands 6210 Semi-natural dry grasslands and scrubland facies on calcareous substrates (<i>Festuco-Brometalia</i>) (* important orchid sites) 7210 Calcareous fens with <i>Cladium mariscus</i> and species of the <i>Caricion davallianae</i> 8240 Limestone pavements*
Lough Lurleen Bog/Glenamaddy Turlough SAC (000301)	3180 Turloughs* 3270 Rivers with muddy banks with <i>Chenopodium rubri p.p.</i> and <i>Bidention p.p.</i> vegetation 7110 Active raised bogs 7120 Degraded raised bogs still capable of natural regeneration 7150 Depressions on peat substrates of the <i>Rhynchosporion</i>
Lough Mask SPA (004062)	A061 Tufted Duck <i>Aythya fuligula</i> A179 Black-headed Gull <i>Chroicocephalus ridibundus</i> A182 Common Gull <i>Larus canus</i> A183 Lesser Black-backed Gull <i>Larus fuscus</i> A193 Common Tern <i>Sterna hirundo</i> A395 Greenland White-fronted Goose <i>Anser albifrons flavirostris</i>
Lough Nageeron SAC (002119)	1833 Slender Naiad <i>Najas flexilis</i> 3130 Oligotrophic to mesotrophic standing waters with vegetation of the <i>Littorelletea uniflorae</i> and/or <i>Isoeto-Nanojuncetea</i>
Lough Rea SAC (000304)	3140 Hard oligo-mesotrophic waters with benthic vegetation of <i>Chara</i> spp
Lough Rea SPA (004134)	A056 Shoveler <i>Anas clypeata</i> A125 Coot <i>Fulica atra</i>
Loughatorick South Bog SAC (000308)	7130 Blanket bogs (* if active bog)

Site Name & Code	Features of Qualifying Interest
Maumturk Mountains SAC (002008)	1106 Salmon <i>Salmo salar</i> 1833 Slender Naiad <i>Najas flexilis</i> 3110 Oligotrophic waters containing very few minerals of sandy plains (<i>Littorelletalia uniflorae</i>) 4010 Northern Atlantic wet heaths with (<i>Erica tetralix</i>) 4060 Alpine and Boreal heaths 7130 Blanket bogs (* if active bog) 7150 Depressions on peat substrates of the <i>Rhynchosporion</i> 8220 Siliceous rocky slopes with chasmophytic vegetation
Middle Shannon Callows SPA (004096)	A038 Whooper Swan <i>Cygnus cygnus</i> A050 Wigeon <i>Anas penelope</i> A122 Corncrake <i>Crex crex</i> A140 Golden Plover <i>Pluvialis apricaria</i> A142 Lapwing <i>Vanellus vanellus</i> A156 Black-tailed Godwit <i>Limosa limosa</i> A179 Black-headed Gull <i>Chroicocephalus ridibundus</i> A999 Wetlands
Monivea Bog SAC (002352)	7110 Active raised bogs 7120 Degraded raised bogs still capable of natural regeneration 7150 Depressions on peat substrates of the <i>Rhynchosporion</i>
Murvey Machair SAC (002129)	1395 Petalwort <i>Petalophyllum ralfsii</i> 21A0 Machairs (* in Ireland)
Omev Island Machair SAC (001309)	1395 Petalwort <i>Petalophyllum ralfsii</i> 21A0 Machairs (* in Ireland) 3140 Hard oligo-mesotrophic waters with benthic vegetation of <i>Chara</i> spp.
Peterswell Turlough SAC (000318)	3180 Turloughs* 3270 Rivers with muddy banks with <i>Chenopodium rubri</i> p.p. and <i>Bidention</i> p.p. vegetation
Pollagoona Bog SAC (002126)	7130 Blanket bogs (* if active bog)
Pollnacknockaun Wood Nature Reserve SAC (000319)	91A0 Old sessile oak woods with <i>Ilex</i> and <i>Blechnum</i> in the British Isles

Site Name & Code	Features of Qualifying Interest
Rahasane Turlough SAC (000322)	3180 Turloughs*
Rahasane Turlough SPA (004089)	A038 Whooper Swan <i>Cygnus cygnus</i> A050 Wigeon <i>Anas penelope</i> A140 Golden Plover <i>Pluvialis apricaria</i> A156 Black-tailed Godwit <i>Limosa limosa</i> A395 Greenland White-fronted Goose <i>Anser albifrons flavirostris</i> A999 Wetlands
River Shannon Callows SAC (000216)	1355 Otter <i>Lutra lutra</i> 6410 <i>Molinia</i> meadows on calcareous, peaty or clayey-silt-laden soils (<i>Molinion caeruleae</i>) 6510 Lowland hay meadows (<i>Alopecurus pratensis</i> , <i>Sanguisorba officinalis</i>) 7230 Alkaline fens 8240 Limestone pavements* 91E0 Alluvial forests with <i>Alnus glutinosa</i> and <i>Fraxinus excelsior</i> (<i>Alno-Padion</i> , <i>Alnion incanae</i> , <i>Salicion albae</i>)
River Suck Callows SPA (004097)	A038 Whooper Swan <i>Cygnus cygnus</i> A050 Wigeon <i>Anas penelope</i> A140 Golden Plover <i>Pluvialis apricaria</i> A142 Lapwing <i>Vanellus vanellus</i> A395 Greenland White-fronted Goose <i>Anser albifrons flavirostris</i> A999 Wetlands
Rosroe Bog SAC (000324)	7130 Blanket bogs (* if active bog) 7150 Depressions on peat substrates of the Rhynchosporion
Ross Lake and Woods SAC (001312)	1303 Lesser Horseshoe Bat <i>Rhinolophus hipposideros</i> 3140 Hard oligo-mesotrophic waters with benthic vegetation of <i>Chara</i> spp.
Rosturra Wood SAC (001313)	91A0 Old sessile oak woods with <i>Ilex</i> and <i>Blechnum</i> in the British Isles
Rusheenduff Lough SAC (001311)	1833 Slender Naiad <i>Najas flexilis</i> 3130 Oligotrophic to mesotrophic standing waters with vegetation of the <i>Littorelletea uniflorae</i> and/or <i>Isoeto-Nanojuncetea</i>

Site Name & Code	Features of Qualifying Interest
Shankill West Bog SAC (000326)	7110 Active raised bogs 7120 Degraded raised bogs still capable of natural regeneration 7150 Depressions on peat substrates of the <i>Rhynchosporion</i>
Slieve Aughty Mountains SPA (004168)	A082 Hen Harrier <i>Circus cyaneus</i> A098 Merlin <i>Falco columbarius</i>
Slyne Head Islands SAC (000328)	1170 Reefs 1364 Grey Seal <i>Halichoerus grypus</i>
Slyne Head Peninsula SAC (002074)	1150 Coastal lagoons 1160 Large shallow inlets and bays 1170 Reefs 1210 Annual vegetation of drift lines 1220 Perennial vegetation of stony banks 1330 Atlantic salt meadows (<i>Glauco-Puccinellietalia maritimae</i>) 1395 Petalwort <i>Petalophyllum ralfsii</i> 1410 Mediterranean salt meadows (<i>Juncetalia maritimi</i>) 1833 Slender Naiad <i>Najas flexilis</i> 2110 Embryonic shifting dunes 2120 Shifting dunes along the shoreline with <i>Ammophila arenaria</i> (white dunes) 21A0 Machairs (* in Ireland) 3110 Oligotrophic waters containing very few minerals of sandy plains (<i>Littorelletalia uniflorae</i>) 3140 Hard oligo-mesotrophic waters with benthic vegetation of <i>Chara</i> spp. 4030 European dry heaths 5130 <i>Juniperus communis</i> formations on heaths or calcareous grasslands 6210 Semi-natural dry grasslands and scrubland facies on calcareous substrates (<i>Festuco-Brometalia</i>) (* important orchid sites) 6410 Molinia meadows on calcareous, peaty or clayey-silt-laden soils (<i>Molinion caeruleae</i>) 6510 Lowland hay meadows (<i>Alopecurus pratensis</i> , <i>Sanguisorba officinalis</i>) 7230 Alkaline fens

Site Name & Code	Features of Qualifying Interest
Slyne Head to Ardmore Point Islands SPA (004159)	A045 Barnacle Goose <i>Branta leucopsis</i> A191 Sandwich Tern <i>Sterna sandvicensis</i> A194 Arctic Tern <i>Sterna paradisaea</i> A195 Little Tern <i>Sterna albifrons</i>
Sonnagh Bog SAC (001913)	7130 Blanket bogs (* if active bog)
Termon Lough SAC (001321)	3180 Turloughs*
The Twelve Bens/ Garraun Complex SAC (002031)	1029 Freshwater Pearl Mussel <i>Margaritifera margaritifera</i> 1106 Salmon <i>Salmo salar</i> 1355 Otter <i>Lutra lutra</i> 1833 Slender Naiad <i>Najas flexilis</i> 3110 Oligotrophic waters containing very few minerals of sandy plains (<i>Littorelletalia uniflorae</i>) 3130 Oligotrophic to mesotrophic standing waters with vegetation of the <i>Littorelletea uniflorae</i> and/or <i>Isoeto-Nanojuncetea</i> 4060 Alpine and Boreal heaths 7130 Blanket bogs (* if active bog) 7150 Depressions on peat substrates of the <i>Rhynchosporion</i> 8110 Siliceous scree of the montane to snow levels (<i>Androsacetalia alpinae</i> and <i>Galeopsietalia ladani</i>) 8210 Calcareous rocky slopes with chasmophytic vegetation 8220 Siliceous rocky slopes with chasmophytic vegetation 91A0 Old sessile oak woods with <i>Ilex</i> and <i>Blechnum</i> in the British Isles
Tully Lough SAC (002130)	1833 Slender Naiad <i>Najas flexilis</i> 3130 Oligotrophic to mesotrophic standing waters with vegetation of the <i>Littorelletea uniflorae</i> and/or <i>Isoeto-Nanojuncetea</i>
Tully Mountain SAC (000330)	4030 European dry heaths 4060 Alpine and Boreal heaths
West Connacht Coast SAC (002998)	1349 Common Bottlenose Dolphin <i>Tursiops truncatus</i>
Williamstown Turloughs SAC (002296)	3180 Turloughs*



Inishbofin - Kay Synott





Cover image: Galway Hookers, Connemara - Pat O'Connor