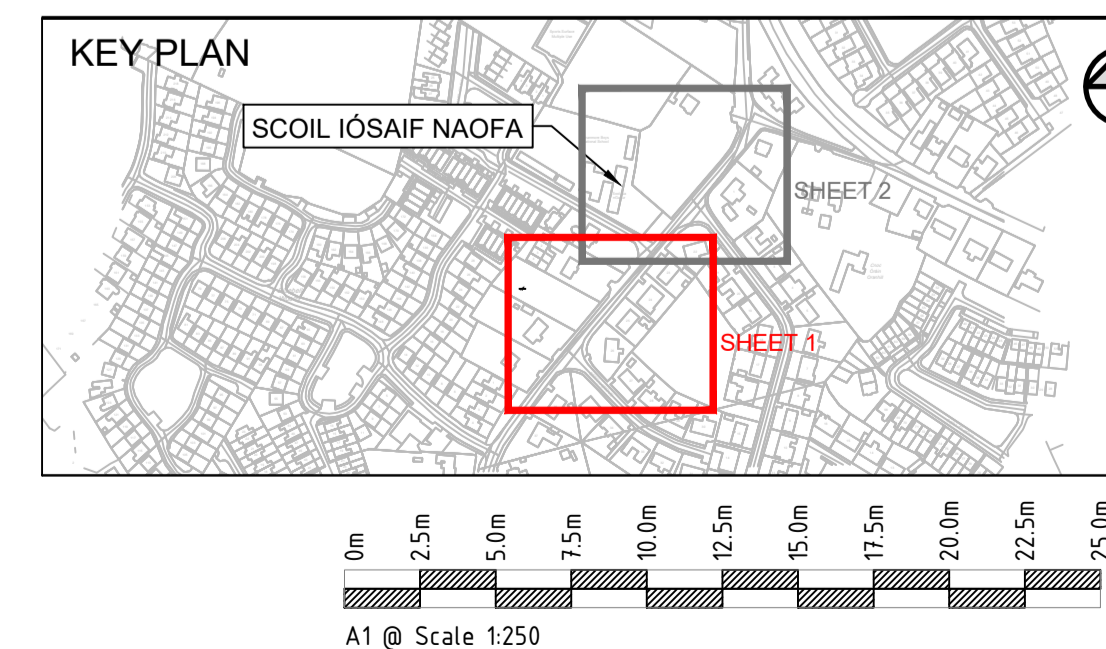
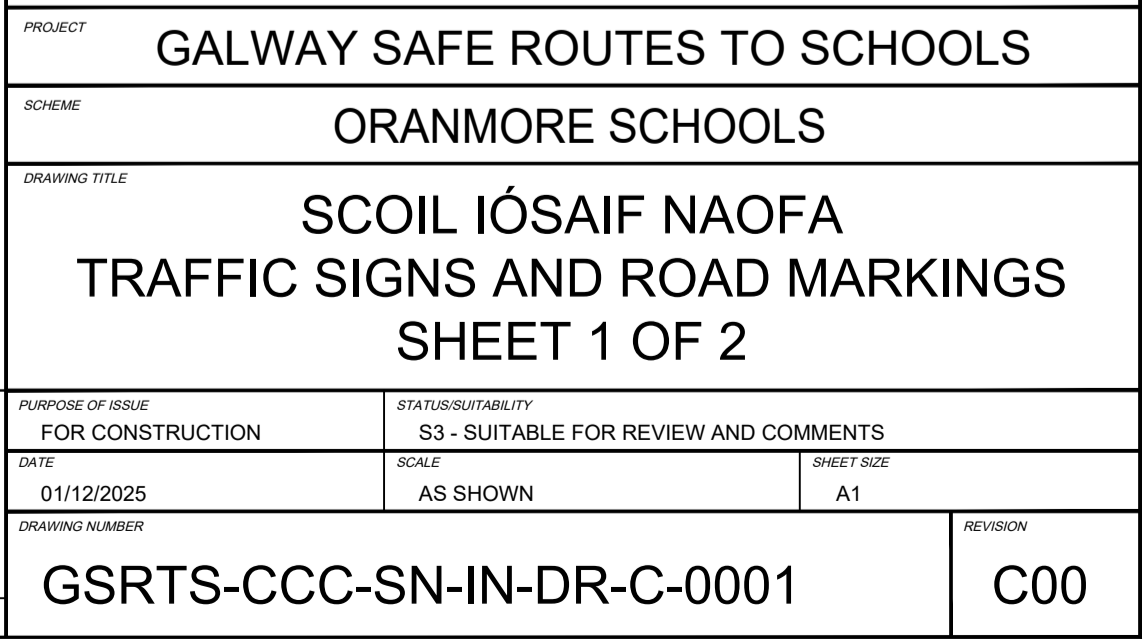


[illegible]

1. This drawing is the property of CCC. This drawing should not be relied on or used in circumstances other than those for which it was originally prepared and for which CCC was commissioned.
2. No part of this document may be reproduced or transmitted in any form or stored in any retrieval system of any nature without the written permission of CCC as copyright holder except as agreed for use on the project for which the document was originally issued. Do not scale. Use figured dimensions only. Co-ordinate system used is Irish Transverse Mercator.
3. For signs/bollards being removed refer to Site Clearance drawings  
GSRTS-CCC-SC-IN-DR-C-0001-0002.
4. Drawings to be read in conjunction with Schedule GSRTS-CCC-SN-IN-SH-C-0001, GSRTS-CCC-SN-ZZ-SD-C-0001 and Specification Appendices.
5. All traffic signs should be in accordance with the Department of Transport Traffic Signs Manual (TSM) and NTA Safe Routes to School Design Guide.
6. All traffic signs locations are to be confirmed with the Employers Representative.
7. Unless stated otherwise, all sign faces are to be set back min 450mm in urban areas from the edge of pavement. Where signs are placed adjacent to active travel path the post shall be setback 500mm from it's the edge.

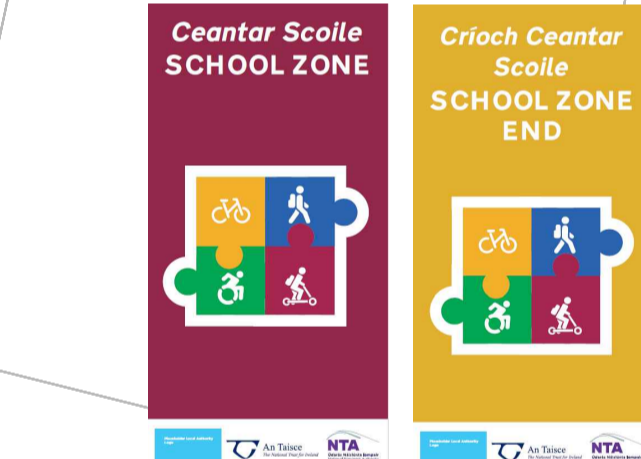
	REFERENCE NUMBER	TSM REF.	SIGN SIZE (mm)
For details, refer to Schedule GSRTS-CCC-SN-IN-SH-C-0001			
<b>SIGNS:</b>			
	Proposed Single Plate Sign		
	Existing Sign to be retained		
	Existing Sign to be taken down and Re erected in a new post and foundation		
	Existing Sign to be removed		
	School Zone Banner/Totem as per SRTS Design guide Appendix 2. SZ-133		
	Proposed Flexible Pencil Bollards as per SRTS Design guide Appendix 2. SZ-110 with RS76 retention socket		
	Proposed Flexible Pencil Bollards as per SRTS Design guide Appendix 2. SZ-110 with proprietary flange		
	Proposed Traffic Signals		
<b>ROAD MARKING SYMBOLS (TSM REFERENCE):</b>			
	RRM-015 Disabled Persons Symbol		
	M-111 Pedestrian Symbol		
	M-112 Traffic Calming Triangle		
	M-114 STOP Worded Marking		
	M-118 Cycle Track Direction Arrow - Straight Ahead		
	M-116 Cycle Symbol (2750mm)		
	5m Coloured Band School Zone with White text as per TSM. RAL3027 (Thermoplastic)		
	3m Coloured Band School Zone with M-106 SLOW Worded Marking (1600mm)		
	RRM-001 Continuous Single Centre Line, 100mm Thick		
	RRM-002B Broken Centre Line, 3m Mark & 3m Gap, 100mm Thick		
	RRM-003C Modified Lane Line, 1m Mark & 1m Gap, 100mm Thick		
	RRM-008 Double Yellow Line, Both Continuous, 100mm Thick, 100mm space		
	RRM-017 Stop Line, Continuous, 200mm Thick		
	M-131 Pedestrian Line, Single Continuous Line, 100mm Thick		
	RPC-002 Zigzag Markings		
	RRM 010 School Keep Clear Marking, 700mm yellow letters, 150mm Thick yellow line		
	RRM-020 Yellow Box Marking, 200mm boundary, 150mm diagonal lines		
	RRM-013 Parking Bays - Perpendicular, 50mm thick white line		
	Existing road marking to be retained		

C00	01/12/2025	FOR CONSTRUCTION	KK	MM	SF
REV	DATE	DESCRIPTION	BY	CHK	APD



CONSTRUCTION

Oranmore Boys  
National School



Scoil Na  
nGasur

SRTS PVC WOVEN BANNER - DOUBLE SIDED  
1.007 'School Zone' on the approach side - 750 x 1500  
1.008 'School Zone End' on the departure side - 750 x 1500

7xPARKING BAYS: 2.4x5m  
1xDISABLED PERSON PARKING BAY: 2.4x6m



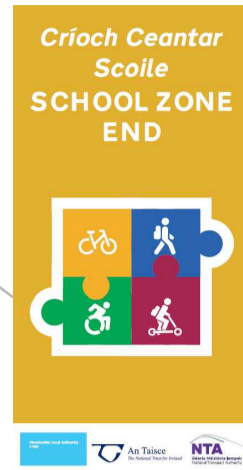
1.009 | RUS 027 - 750

EXISTING RUS 019 AND BUSINESS  
SIGNS TO BE RETAINED

1.020 | BUSINESS FLAGS TO BE  
REINSTATED ON NEW POST.  
PARKING RESTRICTION RUS 019  
SIGN TO BE REMOVED

1.000 | SHEETS

EXISTING STONE ROAD NAME  
SIGN TO BE RETAINED



SRTS PVC WOVEN BANNER - DOUBLE SIDED  
1.016 'School Zone' on the approach side - 750 x 1500  
1.017 'School Zone End' on the departure side - 750 x 1500

SRTS PVC WOVEN BANNER - DOUBLE SIDED  
1.018 'School Zone' on the approach side - 750 x 1500  
1.019 'School Zone End' on the departure side - 750 x 1500

EXISTING REFLECTIVE  
BOLLARD TO BE RETAINED

EXISTING ROAD MARKING  
TO BE REPAINTED

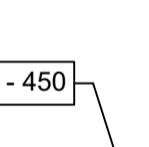
EXISTING ROAD MARKING  
TO BE REPAINTED

EXISTING ACTIVE TRAVEL  
SIGN + 2 WARNING SIGNS TO  
BE RETAINED

EXISTING ROAD MARKING  
TO BE REPAINTED

1.013 | RUS 058CL - 450  
1.014 | P010 - 350 x 235

1.012 | RUS 058CR - 450



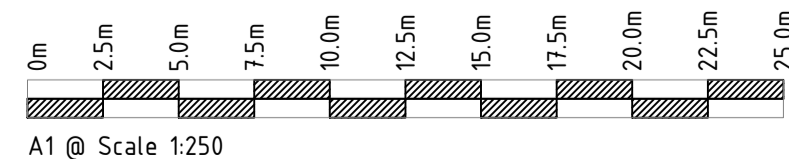
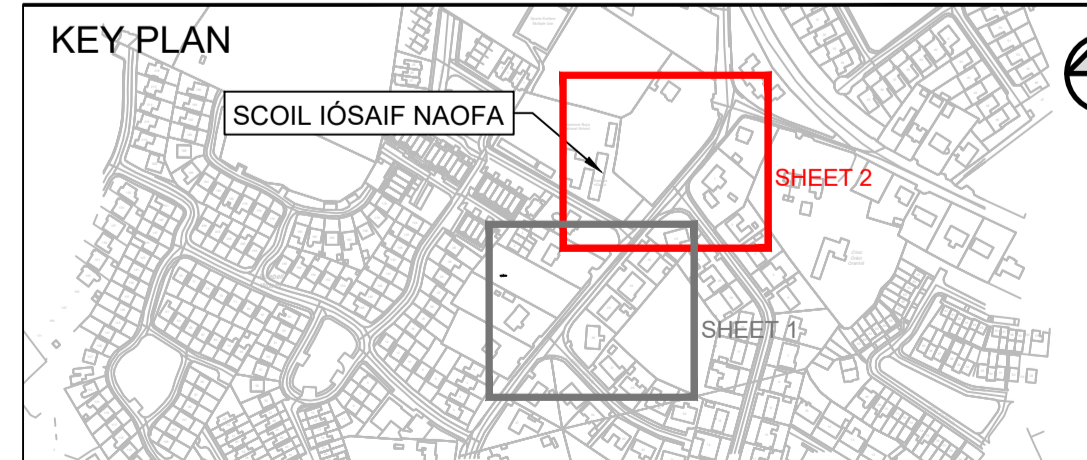
EXISTING ROAD NAME  
SIGN TO BE RETAINED

EXISTING RUS 019 SIGN  
TO BE RETAINED

1.010 | RUS 027 - 750



1.011 | EXISTING SLOW  
ZONE SIGN TO BE  
REINSTATED ON NEW POST



## NOTES

- This drawing is the property of CCC. This drawing should not be relied on or used in circumstances other than those for which it was originally prepared and for which CCC was commissioned.
- No part of this document may be reproduced or transmitted in any form or stored in any retrieval system of any nature without the written permission of CCC as copyright holder expect as agreed for use on the project for which the document was originally issued. Do not scale. Use figured dimensions only. Co-ordinate system used is Irish Transverse Mercator.
- For signs/bollards being removed refer to Site Clearance drawings
- Drawings to be read in conjunctions with Schedule GSRTS-CCC-SN-IN-SH-C-0001, GSRTS-CCC-SN-ZZ-SD-C-0001 and Specification Appendices.
- All traffic signs should be in accordance with the Department of Transport Traffic Signs Manual (TSM) and NTA Safe Routes to School Design Guide.
- All traffic signs locations are to be confirmed with the Employers Representative.
- Unless stated otherwise, all sign faces are to be set back min 450mm in urban areas from the edge of pavement. Where signs are placed adjacent to active travel path the post shall be setback 500mm from it's the edge.

## LEGEND

REFERENCE NUMBER.	TSM REF.	SIGN SIZE (mm)
For details, refer to Schedule GSRTS-CCC-SN-IN-SH-C-0001		
SIGNS:		
	Proposed Single Plate Sign	
	Existing Sign to be retained	
	Existing Sign to be taken down and Re erected in a new post and foundation	
	Existing Sign to be removed	
	School Zone Banner/Totem as per SRTS Design guide Appendix 2. SZ-133	
	Proposed Flexible Pencil Bollards as per SRTS Design guide Appendix 2. SZ-110 with RS76 retention socket	
	Proposed Flexible Pencil Bollards as per SRTS Design guide Appendix 2. SZ-110 with proprietary flange	
	Proposed Traffic Signals	
ROAD MARKING SYMBOLS (TSM REFERENCE):		
	RRM-015 Disabled Persons Symbol	
	M-111 Pedestrian Symbol	
	M-112 Traffic Calming Triangle	
	M-114 STOP Worded Marking	
	M-118 Cycle Track Direction Arrow - Straight Ahead	
	M-116 Cycle Symbol (2750mm)	
	5m Coloured Band School Zone with White text as per TSM. RAL3027 (Thermoplastic)	
	3m Coloured Band School Zone with M-106 SLOW Worded Marking (1600mm)	
	RRM-001 Continuous Single Centre Line, 100mm Thick	
	RRM-002B Broken Centre Line, 3m Mark & 3m Gap, 100mm Thick	
	RRM-003C Modified Lane Line, 1m Mark & 1m Gap, 100mm Thick	
	RRM-008 Double Yellow Line, Both Continuous, 100mm Thick, 100mm space	
	RRM-017 Stop Line, Continuous, 200mm Thick	
	M-131 Pedestrian Line, Single Continuous Line, 100mm Thick	
	RPC-002 Zigzag Markings	
	RRM 010 School Keep Clear Marking, 700mm yellow letters, 150mm Thick yellow line	
	RRM-020 Yellow Box Marking, 200mm boundary, 150mm diagonal lines	
	RRM-013 Parking Bays - Perpendicular, 50mm thick white line	
	Existing road marking to be retained	

C00	01/12/2025	FOR CONSTRUCTION	KK	MM	SF
REV	DATE	DESCRIPTION	BY	CHK	APD

CLIENT / CONSULTANT

PROJECT	GALWAY SAFE ROUTES TO SCHOOLS
SCHEME	ORANMORE SCHOOLS
DRAWING TITLE	SCOIL IÓSAIF NAOFA TRAFFIC SIGNS AND ROAD MARKINGS SHEET 2 OF 2 - OPTION 1

PURPOSE OF ISSUE	STATUS/SUITABILITY
FOR CONSTRUCTION	S3 - SUITABLE FOR REVIEW AND COMMENTS
DATE	SCALE
01/12/2025	AS SHOWN
DRAWING NUMBER	SHEET SIZE
GSRTS-CCC-SN-IN-DR-C-0002	A1
REVISION	C00