

## The Need for the Scheme

Transport Infrastructure Ireland (TII) (formerly the National Roads Authority (NRA)), are promoting a scheme to provide online Motorway Service Areas (MSA) at specific locations across the Irish Motorway Network.

TII is charged with providing a safe and efficient network of national roads. It is increasingly accepted that a safe road network includes the provision of sufficient parking areas to allow drivers to stop and rest. TII proposes to meet the needs of road users through providing On-line Type 1 Service Areas at strategic locations along the motorway network. An On-line Type 1 Service Area is 'a large scale service area providing an amenity building (including a convenience shop, restaurant, washrooms and tourist information), fuel facilities, parking and picnic area'.

## Study Area

The MSA is being developed in line with TII's National Policy as outlined in the Service Area Policy document dated August 2014 available for download at the website address:

<http://www.tii.ie/tii-library/policies/>

The policy identifies the need for a service area at the junction of the M6/M17/M18. The intention of the policy is that the service area be located at an appropriate location and be accessible



to both the M6 and M17/18 traffic.

## Site Options

As part of the site selection process to identify potential site options within this study area, the project team has been carrying out studies to identify the key engineering and environmental constraints.

A total of three locations are being assessed generating six possible sites where a MSA could be developed. Refer to the map on the back of this

brochure for the locations of the potential sites. It is proposed to develop a MSA on one side of the motorway that would be accessible in either direction via a new grade separated junction on the M6 Motorway or a fifth arm off the Rathmorrissey interchange.

Following a review of the information gathered at this public consultation, together with a review of all ongoing environmental, engineering and economic assessments, the site selection study will then be finalised and a preferred site will be chosen.



## What happens then?

A preliminary design will then be prepared. This will involve further detailed surveys and investigations in order to finalise the site layout and proposed grade separated junction providing access to the development. This will enable the extent of the land required for the proposed development to be determined.

An Environmental Impact Statement and Compulsory Purchase Order will then be prepared for submission to An Bord Pleanála. Future advancement of the scheme is subject to ongoing approvals and funding.

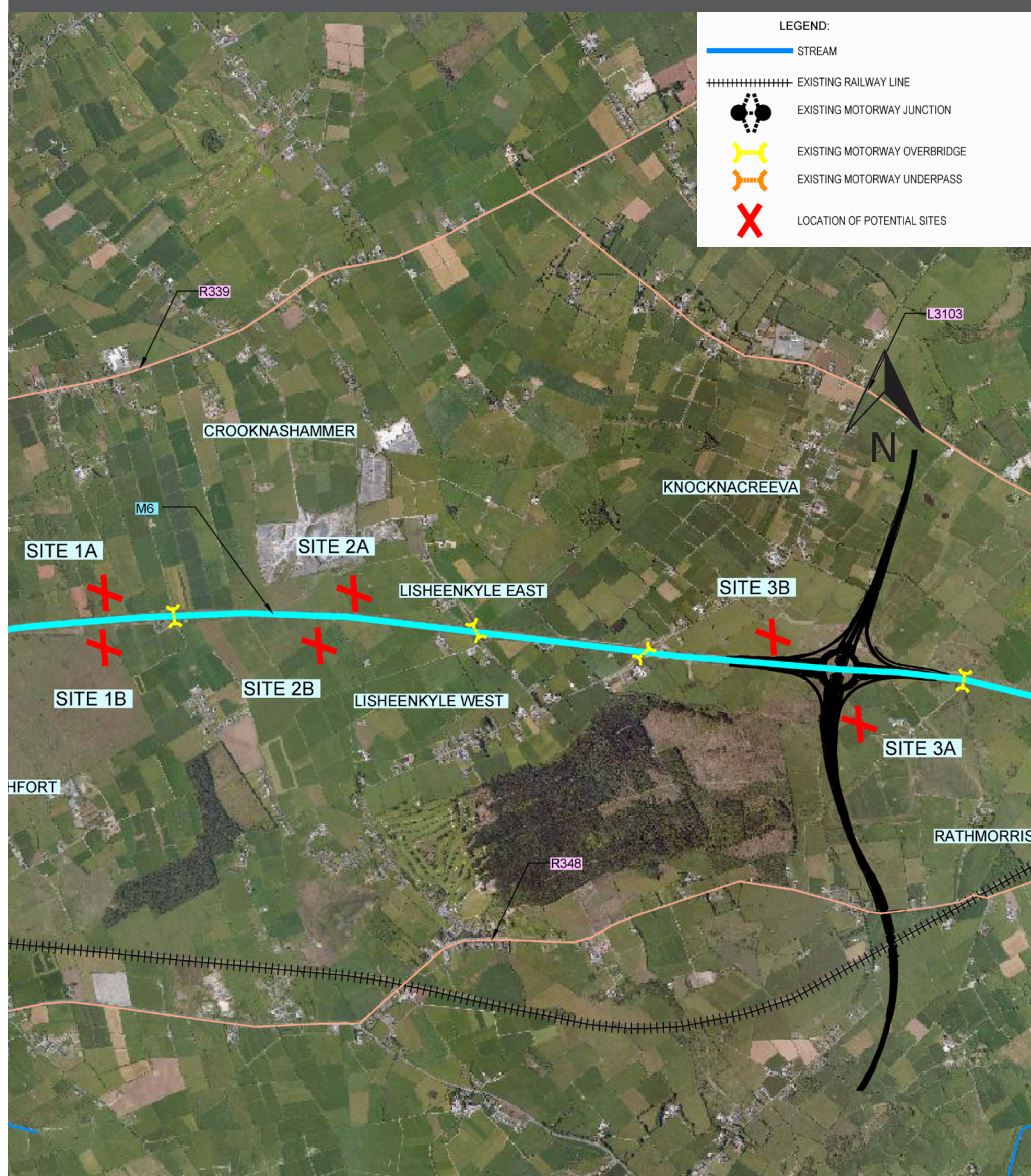


## Your Involvement

Now that you have studied the proposals, please let us know your opinions on the feedback form provided. If you do not have time to complete it here, please take it away with you and return by post to Halcrow Barry at the address overleaf within two weeks.

Your views and comments will be taken into consideration during the Site Selection Process. Thank you for your assistance.





Location of Potential Sites for M6 MSA

## Proposed M6 Motorway Service Area



### Further Information

The M6 Motorway Service Area is being developed by Halcrow Barry in association with Transport Infrastructure Ireland (TII). For further information on this project please contact:

Clare Dewar,  
Halcrow Barry,  
Units 5 & 6 Classon House, Dundrum  
Business Park, Dublin 14.  
Tel: +353 (0)1 485 1489  
Email: [clare.dewar@ch2m.com](mailto:clare.dewar@ch2m.com)

